

Éclat

Parts & Accessories





Éclat BMX stream rolls into 2020 building on our already vast and all-encompassing product line, adding some highly anticipated and carefully engineered new products which have been in development together with our PRO team over the past year.

One of the strongest BMX forks ever created:

The **Storm Fork** is the result of over 3 years of laboratory testing and manufacturing refinements to create the ultimate BMX fork, fully backed by a **Lifetime Guarantee**. Taking the Storm Fork's recipe as a base, for 2020 we are excited to offer Éclat PRO and international powerhouse **Jordan Godwin** his own signature fork, complete with a super responsive 20mm offset and his own hand-drawn graphic set. The Storm Fork line also expands with the addition of the **Storm XLT Fork**, a slimmed down but still guaranteed for life version, available in 24mm and 28mm offsets, designed for riders wanting an incredibly strong fork but with all the excess fat trimmed off.

This year sees a healthy injection of colour into our product line. We're always trying to come up with fresh and unique new colourways to apply to our products, and this year we feel we easily have two of our best yet.

The bold **Sandblasted Purple** and unique **Vision Camo** colourways are available now on selected éclat products including pegs, rims, stems and sprockets.

Pedals have always been a component that have fascinated and inspired us. Essentially the vital part that makes a bicycle a bicycle, having the right place for your feet can make the biggest difference to how your bike rides.

The **Centric Pedal** is a brand-new product for 2020, and uses a larger platform and a unique axle configuration allowing

your feet to be closer to the centre of the bike without sacrificing any surface area. Designed together with many of the guys on the PRO team who wanted to try a "different feeling pedal", the Centric's unique design gives a more comfortable foot position and feeling whilst riding. All the guys on the team who have been helping us test them simply can't ride anything else now.

Given the success of his signature **Chocolate Bar**, we've given Jordan Godwin's signature bars a height upgrade and now offer a taller 9.25" rise option as well as the original 9" rise. With many riders wanting to switch back to steel pegs as of recently we wanted to offer a new chromoly peg designed to hold up to the brutality of modern-day street riding. Available in 4.5" and 4.7" inches long, the **Dura Peg** feature a unique butted construction with a 3.5mm thick end section to resist deformation and denting caused by grinding and day to day abuse.

The **E440 Rim** is the result of a two-year quest to make the lightest possible rim, that could still hold up to the pure savagery that our PRO team put their wheels through. Weighing in at a measly 440g, the E440 is a great 'lighter weight' solution for riders wanting a tough, dependable rim that helps reduce rotational weight. The E440 Rim is also available as a complete wheelset laced up to our game changing **Seismic Hub** set, making what we can honestly say is the most advanced BMX wheelset ever laced up.

Words can only explain so much so it's up to you now. Take your time and browse our brand new 2020 éclat collection.



Éclat E440 rims

combo seats

Éclat Unify combo seat - slim padded

● black

Éclat

- Material:** 100% nylon with inner 6061-T6 alloy center post
- Size:** 25.4mm seat post
- Color:** black
- Features:**
- patented design by Éclat
 - slim padding
 - seat combo designed for riders wanting a lighter seat
 - unique seat support structure concept
 - larger and more stable seat base shape
- Weight:** 255g (9oz : 0.56lbs)



combo seats



Éclat Unify combo seat - fat padded

● black

- Material:** 100% nylon with inner 6061-T6 alloy center post
- Size:** 25.4mm seat post
- Color:** black
- Features:**
- patented design by Éclat
 - fat padding
 - seat combo designed for riders wanting a lighter seat
 - unique seat support structure concept
 - larger and more stable seat base shape
- Weight:** 328g (11.57oz : 0.72lbs)



pivotal seats

Éclat Bios pivotal seat - slim padded



Material: injection molded base

Color: black, brown leather

Features:

- exclusive Éclat designed pivotal seat base
- reinforced nose section
- slim padding

Weight: 283g (10oz : 0.62lbs)



Éclat



pivotal seats



Éclat Bios pivotal seat - mid padded

- black chevron **NEW**
- brown leather
- technical black

Material: injection molded base
Color: black chevron, brown leather, technical black
Features:

- exclusive Éclat designed pivotal seat base
- reinforced nose section
- mid padding

Weight: 313g (11.3oz : 0.69lbs)



pivotal seats

Éclat Bios pivotal seat - fat padded

- Material:** injection molded base
- Color:** black chevron, brown leather, technical black, hamilton brown, vision camo
- Features:**
- exclusive Éclat designed pivotal seat base
 - reinforced nose section
 - fat padding
- Weight:** 338g (11.9oz : 0.74lbs)

- black chevron **NEW** ● brown leather ● technical black
- hamilton brown ● vision camo **NEW**

Éclat



pivotal seats



Éclat Oz pivotal seat - slim padded

● black ● brown leather

- Material:** nylon/fiber seat base
- Color:** black, brown leather
- Features:**
- custom developed shape and base construction
 - designed by Éclat
 - super strong seat construction
 - slim padding
- Weight:** 301g (10.61oz : 0.66lbs)



pivotal seats

Éclat Oz pivotal seat - fat padded



Material: nylon/fiber seat base

Color: black, brown leather

Features:

- custom developed shape and base construction
- designed for Éclat
- super strong seat construction
- fat padding

Weight: 340g (11.99oz : 0.75lbs)

Éclat



pivotal seatposts



Éclat Torch pivotal seatpost

● black ● silver polished **NEW**

- Material:** 6061-T6 3D forged alloy
Size: 25.4mm
Length: 135mm (mid) or 230mm (long)
Color: black, silver polished
Features:
- pivotal system compatible seatpost
 - star shape wall structure for added strength
 - cnc finish, Éclat exclusive design
- Weight:** 131g (4.62oz : 0.29lbs)



pivotal seatposts

Éclat Torch15 pivotal seatpost

● black

● silver polished **NEW**

Éclat

- Material:** 6061-T6 3D forged alloy
- Size:** 25.4mm
- Length:** 135mm (mid) or 230mm (long)
- Color:** black, silver polished
- Features:**
- pivotal system compatible seatpost
 - 15mm offset bolt position (lay back seatpost)
 - star shape wall structure for added strength
 - cnc finish, Éclat exclusive design
- Weight:** 139g (4.90oz : 0.30lbs)



seat clamp



Éclat Pure seat clamp **NEW**

● black

● silver polished

Material: 6061-T6 alloy, forged and CNC machined

Color: black, silver polished

Features: • slim, low profile seat clamp

• 28.6MM ID

• 6mm hex

Weight: tba



stems

Éclat Burns stem (Sean Burns signature stem)

● black

Material: 6061-T6 alloy, full cnc machined

Steer Tube: 1.1/8 clamp-on

Reach: 50mm

Rise: 23mm

Stack: 32mm

Color: black

- Features:**
- Sean Burns signature stem
 - mid rise top load stem
 - large head 6mm hex bolts and wider faceplate for superior grip
 - unique offset rear for improved clamping
 - designed to be also run flipped for a lower rise

Weight: 326g (11.48oz : 0.72lbs)



Éclat





Éclat Onyx stem

● black

● sandblast purple **NEW**

Material: 6061-T6 alloy, full 3D forged

Steer Tube: 1.1/8 clamp-on

Reach: 50mm

Rise: 33mm

Stack: 32.5mm

Color: black, sandblast purple

Size: 22.2mm or 25.4mm

- Features:**
- cold forged design for strength, aesthetics and good value
 - STC (Shark Tooth Clamping) for a secure bar grip and less slipping
 - weight saving internal machining
 - 22.2mm or 25.4mm Oversize clamping options

Weight: 316g (11.15oz : 0.69lbs)



stems



Éclat Metra stem

● black

● silver polished **NEW**

● vision camo **NEW**

Éclat

- Material:** 6061-T6 alloy, full cnc finish
- Steer Tube:** 1.1/8 clamp-on
- Reach:** 51mm
- Rise:** 30mm
- Stack:** 32mm
- Color:** black, silver polished, vision camo
- Size:** 22.2mm or 25.4mm
- Features:**
- 6mm large head bolts
 - unique offset rear for improved clamping
 - wider faceplate to improve grip
 - STC (Shark Tooth Clamping)
 - 22.2mm or 25.4mm Oversize clamping options
- Weight:** 367g (12.87oz : 0.78lbs)





Éclat Domain frontload stem

● black

- Material:** 6061-T6 alloy, full cnc finish
- Steer Tube:** 1.1/8 clamp-on
- Reach:** 50mm
- Rise:** 8.5mm
- Stack:** 33mm
- Color:** black
- Size:** 22.2mm or 25.4mm
- Features:**
- strong and clean frontload stem
 - 6mm large head bolts
 - unique offset rear for improved clamping
 - weight saving internal machining
 - 22.2mm or 25.4mm Oversize clamping options
- Weight:** 309g (10.9oz : 0.61lbs)



stems



Éclat Domain topload stem

● black

- Material:** 6061-T6 alloy, full cnc finish
- Steer Tube:** 1.1/8 clamp-on
- Reach:** 48mm or 52mm
- Rise:** 34mm
- Stack:** 33mm
- Color:** black, high polished
- Size:** 22.2mm or 25.4mm
- Features:**
- strong and clean topload stem
 - two reach options
 - 6mm large head bolts
 - unique offset rear for improved clamping
 - weight saving internal machining
 - 22.2mm or 25.4mm Oversize clamping options
- Weight:** 48mm (25.4mm) - 326g (11.5oz : 0.72lbs)



Éclat

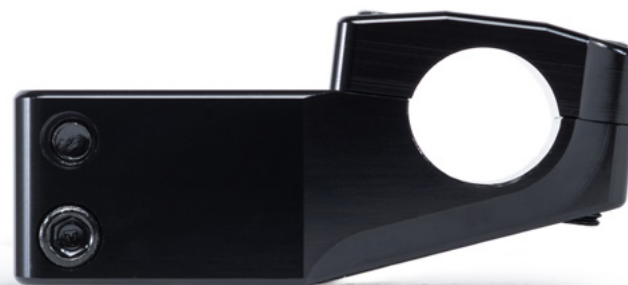




Éclat Dune stem

● black

- Material:** 6061-T6 alloy, full cnc finish
- Steer Tube:** 1.1/8 clamp-on
- Reach:** 51mm
- Rise:** 31mm
- Stack:** 33mm
- Color:** black
- Size:** 22.2mm or 25.4mm
- Features:**
 - strong top load stem with wider faceplate
 - 6mm large head bolts
 - unique offset rear for improved clamping
 - cnc machining under the stem to reduce weight
 - 22.2mm or 25.4mm Oversize clamping options
- Weight:** 354g (12.5oz : 0.78lbs)



handlebars



Éclat Chocolate bar (Jordan Godwin signature bar)

● black

● c.p.

Éclat

Material: full liquid post heat-treated seamless 4130 crmo

Tubing: 7/8 multiple butted

Rise: 9"

Width: 27.75"

Backsweep: 10.5°

Upsweep: 1.5°

Rise: 9.25" **NEW**

Width: 28"

Backsweep: 10.5°

Upsweep: 1.5°

Color: black, c.p.

- Features:**
- Jordan Godwin signature handlebar
 - slightly narrower bars with smaller box section perfect for barspins
 - 1.8mm wall thickness on top and bottom bends for strength
 - available with 22.2mm or 25.4mm Oversize clamping area

Weight: 22.2mm - 860g (30.2oz : 1.89lbs)

25.4mm - 915g (32.1oz : 2lbs)



handlebars



Éclat Dive bar

● black

● c.p.

Material: full liquid post heat-treated seamless 4130 crmo

Tubing: 7/8 multiple butted

Rise: 9.25"

Width: 29.5"

Backsweep: 11°

Upsweep: 2°

Rise: 9.5"

Width: 29.75"

Backsweep: 11°

Upsweep: 2°

Rise: 10"

Width: 30"

Backsweep: 11°

Upsweep: 2°

Color: black, c.p.

Features:

- updated geometry and rise options
- available with 22.2mm or 25.4mm Oversize clamping area

Weight: 9.25" (22.2mm) - 950g (33.4oz : 2.09lbs)

9.25" (25.4mm) - 920g (32.3oz : 2.02lbs)

9.5" (22.2mm) - 1025g (36.0oz : 2.26lbs)

9.5" (25.4mm) - 1015g (35.6oz : 2.23lbs)

10" - tba



handlebars



Éclat Morrow bar (Ty Morrow signature bar)

● black

● c.p.

Éclat

Material: full liquid post heat-treated seamless 4130 crmo

Tubing: 7/8 multiple butted

Rise: 10"

Width: 30.15"

Backsweep: 11°

Upsweep: 3°

Color: black, c.p.

- Features:**
- Ty Morrow signature handlebar
 - oversized 22.2mm cross tube for increased durability
 - available with 22.2mm or 25.4mm Oversize clamping area

Weight: 1020g (36oz : 2.25lbs)



handlebars



Éclat Strangler 4pc bar (22.2mm)

● black ● c.p.

Material: full liquid post heat-treated seamless 4130 crmo
Tubing: plain gauge tubing for increased durability

Rise: 9.1"
Width: 29"
Backsweep: 11.5°
Upsweep: 2.5°

Rise: 9.6"
Width: 29.5"
Backsweep: 11.5°
Upsweep: 2.5°

Rise: 10"
Width: 30"
Backsweep: 11.5°
Upsweep: 2.5°

Color: black, c.p.

Features:

- 4pc design
- larger diameter top bend for cleaner look and more resistance to bending
- new 22.2mm clamping option for wider compatibility

Weight: 1295g (45.7oz : 2.86lbs)



handlebars



Éclat Strangler 4pc bar (25.4mm)



black



c.p.

Éclat

Material: full liquid post heat-treated seamless 4130 crmo
Tubing: tapered 22.2mm to 25.4mm multiple butted sied tubes

Rise: 9.1"
Width: 29"
Backsweep: 11.5°
Upsweep: 2.5°

Rise: 9.6"
Width: 29.5"
Backsweep: 11.5°
Upsweep: 2.5°

Rise: 10"
Width: 30"
Backsweep: 11.5°
Upsweep: 2.5°

Color: black, c.p.

Features:

- 4pc design; larger diameter top bend for cleaner look and more resistance to bending
- 25.4mm clamping area and tapered tube for superior strength and clamping power
- only compatible with 25.4mm stems (22.2mm version also available)
- solves common issue of 4pc bar fatigue by greatly increasing contact area at weld

Weight: 9.1" - 1034g (36.4oz : 2.28lbs)
9.6" - 1130g (39.8oz - 2.49lbs)





Éclat Coda fork

● black ● c.p.

- Material:** full liquid post heat-treated seamless 4130 crmo
- Machining:**
 - fully cnc'd steerer and butted fork blades
 - integrated crown race
 - designed for integrated 45° headsets
- Steerer Length:** 170mm, re-designed for extra strength
- Dropouts:**
 - fully invest cast 6mm thick dropout
 - heat-treated 4130 crmo, 3/8" (10mm)
- Offset:** available in 26mm or 32mm
- Topbolt:** M24 thread, 7075-T6 alloy
- Color:** black, c.p.
- Features:**
 - 2.4" tire clearance
 - invest cast dropout fork with x2 offsets
 - LIFETIME GUARANTEE
- Weight:** 32mm offset - 1028g (36.26oz : 2.27lbs)



Éclat Storm 20 fork **NEW**
(Jordan Godwin signature fork)

- Material:** full liquid post heat-treated seamless 4130 crmo
- Machining:**
- fully cnc'd steerer and butted fork blades
 - mechanically formed fork leg
 - integrated crown race
 - designed for integrated 45° headsets
- Steerer Length:** 170mm, re-designed for extra strength
- Dropouts:**
- CNC machined laser cut 5mm thick dropout
 - heat-treated 4130 crmo, 3/8" (10mm)
- Offset:** shorter 20mm offset
- Topbolt:** M24 thread, 7075-T6 alloy
- Color:** glossy black ED, matt pastel blue
- Features:**
- 1pc hydroformed fork leg for super strong, clean look
 - 2.4" tire clearance
 - LIFETIME GUARANTEE
- Weight:** 1021g (36oz : 2.25lbs)

- black ● matt pastel blue





Éclat Storm 25/30 fork

● black ● c.p.

Material: full liquid post heat-treated seamless 4130 crmo

- Machining:**
- fully cnc'd steerer and butted fork blades
 - integrated crown race
 - mechanically formed fork leg
 - designed for integrated 45° headsets

Steerer Length: 170mm, re-designed for extra strength

- Dropouts:**
- cnc machined laser cut 5mm thick dropout
 - heat-treated 4130 crmo, 3/8" (10mm)

Offset: available in 25mm or 30mm

Topbolt: M24 thread, 7075-T6 alloy

Color: black, c.p.

- Features:**
- test facility proven - the strongest fork on the market
 - 1pc hydroformed fork leg for super strong, clean look
 - super strong street fork with x2 offsets
 - 2.4" tire clearance
 - LIFETIME GUARANTEE

Weight: 30mm offset - 1015g (35.8oz : 2.24lbs)



Éclat Storm XLT 24/28 fork **NEW**

● black

● c.p.

Material: full liquid post heat-treated seamless 4130 crmo**Machining:**

- fully cnc'd steerer and butted fork blades
- mechanically formed fork leg
- integrated crown race
- designed for integrated 45° headsets

Steerer Length: 170mm, re-designed for extra strength**Dropouts:**

- CNC machined laser cut 5mm thick dropout with CNC detail
- heat-treated 4130 crmo, 3/8" (10mm)

Offset: available in 24mm or 28mm**Topbolt:** M24 thread, 7075-T6 alloy**Color:** black, c.p.**Features:**

- slimmed down fork legs to reduce weight
- 1pc hydroformed fork leg for super strong, clean look
- super strong all-round fork with x2 offsets
- 2.4" tire clearance
- LIFETIME GUARANTEE

Weight: 898g (31.7oz : 1.98lbs)

integrated headsets



Éclat Wave 6 & Wave 16 integrated headsets

● black

Wave 6

Material: 6061-T6 alloy cnc machined, highend sealed bearings

Color: black

Features:

- supplied with exclusive Éclat designed 6mm top cap & x2 3mm spacers
- variable stack heights between 6-12mm possible
- x1 super slim spacer for perfect cap to frame spacing

Weight: 67g (2.35oz : 0.15lbs)



Wave 16 6061-T6 alloy cnc machined, high-end sealed bearings

black

Material: • supplied with exclusive Éclat designed 16mm top cap & x2 3mm spacers

Color: • variable stack heights between 16-22mm possible

Features: • x1 super slim spacer for perfect cap to frame spacing
complete: 65g (2.3oz : 0.14lbs)

Weight:



integrated headsets

Éclat Cargo integrated headset

- black
- high polished

- Material:** 7075-T6 alloy cnc machined, high-end sealed bearings
- Color:** black, high polished
- Features:**
- supplied with x3 exclusive top caps & x2 3mm spacers
 - variable stack heights between 7-30mm possible
 - x4 super slim spacer for perfect cap to frame spacing
- Weight:** 106g (3.73oz : 0.23lbs)



brakes



Éclat Talon u-brake

● black

Material: die casted alloy

Color: black

- Features:**
- designed for today's wider tires and chainstays
 - comes with Éclat "Force" female brake pads
 - comes with Éclat "Unit" 1pc straddle cable
 - sleek low-profile design with flex resistant arms

Weight: tba



brakes

Éclat Unit u-brake

NEW

● black

● oilslick

Material: cold forged 6066-T6 alloy

Color: black, oilslick

Features:

- comes with Éclat "Force" female brake pads
- comes with Éclat "Unit" 1pc straddle cable
- sleek low-profile design with flex resistant arms

Weight: complete: 171g (6.03oz : 0.37lbs)



Éclat



brake levers



Éclat Sniper brake lever

● black

Material: 6066-T6 alloy

Color: black

- Features:**
- left or right version available
 - unique clasp design, very strong hinge construction
 - cold forged lever for maximum strength
 - perfect shaped lever geometry
 - improved knuckle space

Weight: 98g (3.45oz : 0.22lbs)



brake levers

Éclat Sniper 1-finger brake lever

● black

Material: 6066-T6 alloy

Color: black

Features:

- left or right version available
- unique clasp design, very strong hinge construction
- cold forged lever for maximum strength
- perfect shaped lever geometry for index finger action
- improved knuckle space

Weight: 95g (3.35oz : 0.21lbs)



Éclat



brake pads



Éclat Force brake pad



Material: soft rubber compound with a forged 6061-T6 alloy internal structure

Color: black, white, clear/black, clear/orange, clear/midnight teal

- Features:**
- available as regular bolt or female bolt brake pad version
 - comes with all required hardware (bolts, etc.)
 - imprinted logo on the braking surface
 - shape and compound designed for maximum braking power

Length: 60mm

Weight: 41g (1.44oz : 0.09lbs) per pair

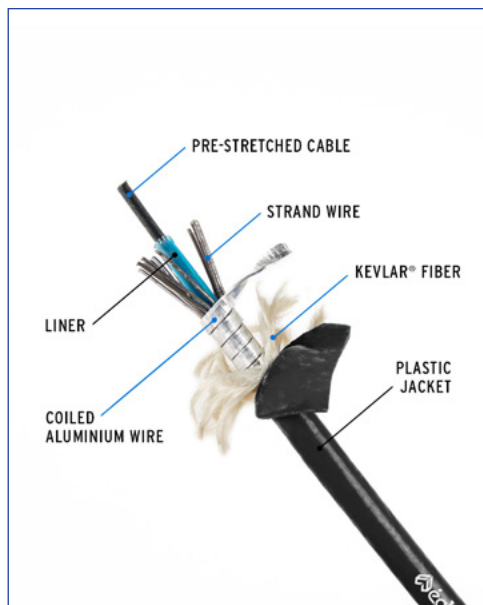


brake cables

Éclat Core linear cable

● black ● blue

- Material:**
- cable: 1.5mm slick, stainless, pre-stretched
 - poly-slick coated inner wire housing: 5mm compressionless, linear strands
- Length:** 130cm (cable housing)
- Color:** black, blue
- Features:**
- reinforcing spiral alloy shell
 - x2 ferrule (loose) and x2 end nipple - included
 - ball and barrel cable nipple
- Weight:** 78g (2.75oz : 0.17lbs)



brake cables



Éclat Unit bridge cable

● black

- Material:**
- cable: 1.5mm slick, stainless, pre-stretched
 - body: crmo body with tin clamp
- Length:** 96mm
- Color:** black
- Features:**
- 1pc bridge and cable design
 - straight cables eliminate stretch under braking
 - barrel cable nipple
 - easy adjustment with single grub screw
- Weight:** 20g (0.7oz : 0.04lbs)



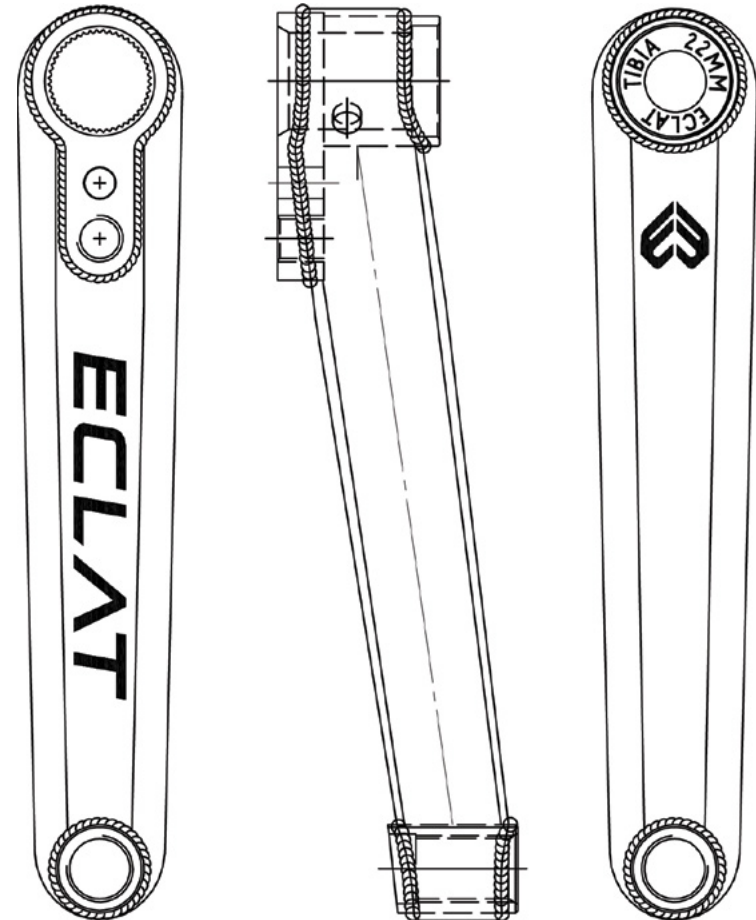
cranks

Éclat Tibia 2pc crank **NEW**

● black

- Material:** tubular heat-treated 4130 crmo arms & crmo axle
- Length:** 160mm, 165mm, 170mm or 175mm
- Axle:** 22mm crmo ultra hollow
- Color:** black
- Features:**
- brand new construction **NEW**
 - includes installation tool
 - RSD & LSD compatible
 - multiple arm length options
 - mega strong, twist resistant street crank
- Weight:** tba

Éclat



cranks



Éclat Spire 2pc crank

- black
- c.p.
- raw **NEW**

- Material:** tubular heat-treated 4130 crmo arms & crmo axle
- Length:** 160mm, 170mm or 175mm
- Axle:** 22mm crmo ultra hollow
- Color:** black, c.p., raw
- Features:**
- strong box shape arm, gussets on pedal and axle box
 - strong 2pc design
 - super short 160mm option
 - RSD & LSD compatible
 - smooth and rounded ankle friendly spindle boss
- Weight:** 170mm - 901g (31.78oz : 1.98lbs)



cranks

Éclat Onyx 3pc crank

● black

● c.p. **NEW**

Éclat

Material: tubular heat-treated 4130 crmo arms & crmo axle

Length: 160mm, 165mm or 175mm

Axle: 24mm crmo ultra hollow

Color: black, c.p.

Features:

- strong, lightweight, 24mm spindle crank
- invest cast pedal & spindle boss
- compatible with spline drive and bolt drive sprockets
- RSD & LSD compatible
- comes supplied with assembly tool
- 6mm hex keys bolts

Weight: 175mm - 833g (29.4oz : 1.83lbs)



cranks



Éclat Maverick 3pc crank

● black ● high polished

- Material:** cold forged 7000 series alloy
- Length:** 170mm or 175mm
- Axle:** 22mm crmo ultra hollow
- Color:** sandblasted black, high polished
- Features:**
- one piece forged alloy crank arm for ultimate strength
 - RSD & LSD compatible
 - heat treated crmo inserts at pedal and spindle bosses
 - compatible with spline and bolt drive sprockets
 - hollowed design for reduced weight
 - comes supplied with assembly tool
- Weight:** 981g (34.6oz : 2.16lbs) 175mm



crank spare parts

Éclat

spare crank bolts

Tibia (22mm)

NEW

Material: 4130 crmo

Size: 22mm hex bolt for Tibia cranks

Spire (22mm)

Material: 4130 crmo

Size: 22mm hex bolt for Spire cranks

Onyx (24mm)

Material: 4130 crmo

Size: 24mm hex bolt for Onyx cranks

Features:

- 6mm hex design
- deep chamfered design for cleaner look
- sold as pair

Maverick (22mm)

Material: 7075 series alloy

Size: 22mm hex bolt & washer for Maverick cranks

Features:

- cnc logo detail
- sold as pair



crank spare parts



spare crank spindles

Onyx (24mm)

Material: hardened, ultra hollow 4130 crmo

Size: 24mm spindle for Onyx cranks

Weight: 195g (6.9oz : 0.43lbs)



Maverick (22mm)

Material: hardened, ultra hollow 4130 crmo

Size: 22mm spindle for Maverick cranks

Weight: 182g (6.4oz : 0.40lbs)



cnc bb sets

Éclat Mid size bb kit

● black ● high polished



- Material:**
 - alloy center spacer and cnc caps
 - machined alloy cap/spacer with etched Éclat detailing
- Size:** mid bb for 19mm, 22mm or 24mm versions
- Color:** black, high polished
- Features:**
 - quality sealed bearings
 - supplied with 2 cone spacers, center spacers, x6 alloy washers
- Weight:**
 - to fit 19mm spindle: 189g (6.66oz : 0.42lbs)
 - to fit 22mm spindle: 174g (6.13oz : 0.38lbs)
 - to fit 24mm spindle: 148g (5.20oz : 0.33lbs)



3d forged sprockets



Éclat Onyx sprocket

● sandblasted black

● sandblast purple **NEW**

- Material:** 6061-T6 alloy, full 3d forged
- Size:** 25t or 26t (black only)
- Thickness:** 6.35mm
- Axle Bore:** 23.8mm
- Color:** sandblasted black, sandblasted purple
- Features:**
- two sided design, pick the side you like the most or flip it to give your bike a new look
 - cold forged sprocket, stronger than cnc
 - runs directly on 24mm spindle
 - supplied with adapter for 19mm & 22mm
- Weight:** 25t: 144g (5.10oz : 0.32lbs)



cnc sprockets

Éclat RS sprocket



black



silver/black

Éclat

Material: 6061-T6 alloy, full cnc finish

Size: 25t or 28t

Thickness: 6.5mm

Axle Bore: 23.8mm

Color: black, silver/black 2-tone

Features: • 6061-T6 alloy, full cnc with unique 5 spoke structure

• runs directly on 24mm spindle

• supplied with adapter for 19mm & 22mm

Weight: 25t: 90g (3.20oz : 0.19lbs)

28t: 102g (3.50oz : 0.22lbs)



cnc sprockets



Éclat Vent sprocket

- black
- vision camo **NEW**

- Material:** 6061-T6 alloy, full cnc finish
- Size:** 25t, 26t (black only) or 28t
- Thickness:** 8mm
- Axle Bore:** 23.8mm
- Color:** black, vision camo
- Features:**
- runs directly on 24mm spindle
 - clearance for wider half-link chains
 - supplied with adapter for 19mm & 22mm
 - hollow cnc spokes for reduced weight
- Weight:**
- 25t: 62g (2.18oz : 0.13lbs)
 - 26t: 71g (2.50oz : 0.15lbs)
 - 28t: 97g (3.41oz : 0.21lbs)



guard sprockets

Éclat Elevate guard sprocket

● black

● sandblasted purple **NEW**

Material: 6061-T6 alloy, full cnc sprocket and nylon/fiberglass replaceable guard

Size: 25t or 28t

Thickness: 8mm thick cnc alloy sprocket and 10mm thick guard

Axle Bore: 23.8mm

Color: black, sandblasted purple

- Features:**
- solid alloy sprocket with cnc machined front section
 - 25t and 28t option
 - super durable, Viper replaceable nylon/fiberglass guard
 - runs directly on 24mm spindle
 - supplied with adapter for 19mm & 22mm
 - clearance for wider half-link chains
 - Viper replaceable guard sold separately

Weight: complete: tba



Éclat



guard sprockets



Éclat AK guard sprocket (Alex Kennedy signature guard sprocket)

● black

- Material:** 6061-T6 alloy, full cnc sprocket and nylon/fiberglass replaceable guard
- Size:** 25t or 28t
- Thickness:** 8mm thick cnc alloy sprocket and 10mm thick guard
- Axle Bore:** 23.8mm
- Color:** black
- Features:**
- 25t and 28t option
 - super durable, replaceable Viper nylon/fiberglass guard
 - runs directly on 24mm spindle
 - supplied with adapter for 19mm & 22mm
 - sunked adapter for better chain alignment
 - clearance for wider half-link chains
 - replaceable guard sold separately
- Weight:** complete: 25t: 150g (5.29oz : 0.33lbs)



cnc guard sprockets

Éclat Vent guard sprocket

● black

● high polished

Éclat

Material: 6061-T6 alloy, full cnc finish

Size: 25t, 27t or 28t

Thickness: 8mm

Axle Bore: 23.8mm

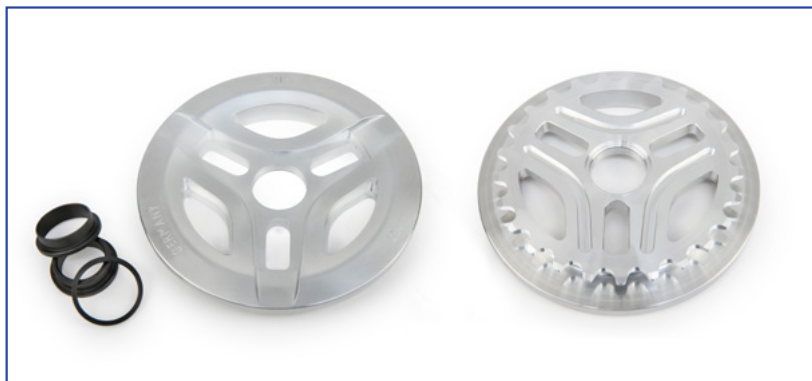
Color: black, high polished

Features:

- runs directly on 24mm spindle
- supplied with adapter for 19mm & 22mm
- clearance for wider half-link chains
- not compatible with Maverick crank

Weight: 25t : 150g (5.29oz : 0.33lbs)

28t : 197g (6.94oz : 0.44lbs)



guard sprockets



Éclat Viper replacement guard

● black

Material: 6061-T6 alloy, full cnc sprocket and nylon/fiberglass replaceable guard

Size: 25t or 28t

Thickness: 8mm thick cnc alloy sprocket and 10mm thick guard

Axle Bore: 23.8mm

Color: black

- Features:**
- 25t and 28t option
 - super durable, replaceable Viper nylon/fiberglass guard
 - runs directly on 24mm spindle
 - supplied with adapter for 19mm & 22mm
 - sunked adapter for better chain alignment
 - clearance for wider half-link chains
 - replaceable guard sold separately

Weight: complete: 25t: 150g (5.29oz : 0.33lbs)



chains

Éclat Diesel chain

● black ● silver

Éclat

- Material:** steel, chromized treatment
Size: 1/2" x 1/8"
Color: black, silver
Features:
- lightweight design
 - very strong pins & plates
 - comes with extra half-link assembled for running any gearing
 - 100 links
- Weight:** 328g (13.47oz : 0.72lbs)



chains



Éclat 4-Stroke chain

-  black
-  silver
-  gold **NEW**

- Material:** steel, chromized treatment
- Size:** 1/2" x 1/8"
- Color:** black, silver
- Features:**
 - heavy duty half-link design
 - more material on plates prevent damage during heavy impacts
- Weight:** 454g (16.2oz : 1lbs)



chains

Éclat Stroke chain

- black
- high polished
- gold **NEW**

- Material:** steel, chromized treatment
- Size:** 1/2" x 1/8"
- Color:** black, silver, gold
- Features:**
 - lightweight half-link design
 - weight saving plates with stronger pin design
- Weight:** 421g (14.85oz : 0.93lbs)



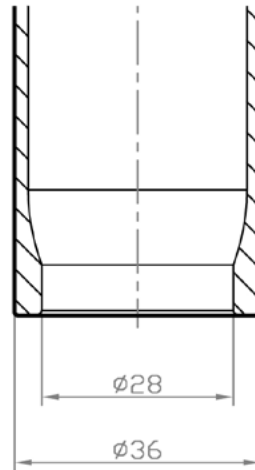
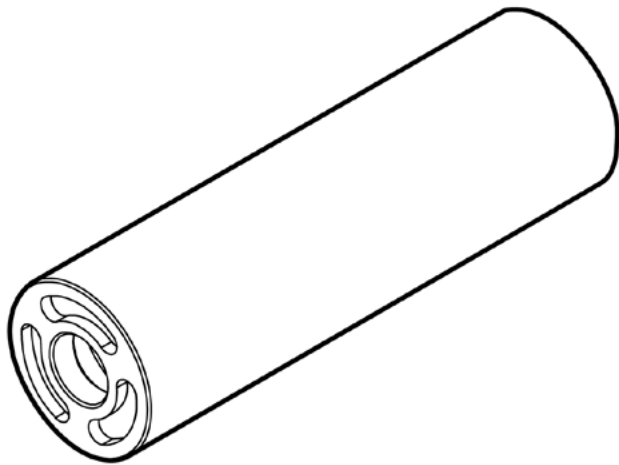
pegs



Éclat Dura peg **NEW** 4.5" (114mm) / 4.7" (120mm)

● phosphate raw

- Material:** 4140 crmo liquid heat-treated
- Size:** 14mm axle, adapter included for 3/8"
- Length:** 4.5" (114mm) or 4.7" (120mm)
- Outer Diameter:** 36mm
- Color:** phosphate raw
- Features:**
- available as 4.5" or longer 4.7" version
 - super durable street peg
 - CNC weight saving detail on base
 - unique 3.5mm end section to resist damage and deformation caused by heavy grinding and spinning into/out of grinds
 - sold as single
- Weight:** tba



Éclat Slotmachine peg 4.13" (105mm) / 4.5" (114mm)

● phosphate raw

- Material:** 4140 crmo liquid heat-treated
- Size:** 14mm axle, adapter included for 3/8"
- Length:** 4.13" (105mm) or 4.5" (114mm)
- Outer Diameter:** 35mm
- Color:** phosphate raw
- Features:**
- available as 4.13" or longer 4.5" version
 - smaller diameter
 - double-butted dent prevention design
 - light weight design 5 bore holes, between 5 slick cut-outs
 - longer length to help spinning in and out of grinds
 - sold as single
- Weight:**
- 4.13" - 179g (6.31oz : 0.39lbs) (per piece)
 - 4.5" - 210g (7.4oz : 0.46lbs) (per piece)





Éclat Venom peg
4" (101mm) / 4.5" (114mm) / 4.8" (122mm)

- **black**
- **burgundy**
- **army green**
- **purple** NEW

- Material:** 4140 crmo liquid heat-treated with seperate nylon/fiberglass sleeve
- Size:** 14mm axle, adapter included for 3/8"
- Length:** 4" (101mm), 4.5" (114mm) or 4.8" (122mm)
- Outer Diameter:** 38mm
- Color:** black, burgundy (4.5" only), army green (4.5" and 4.8" only), purple (4.5" and 4.8" only)
- Features:**
- available as 4", 4.5" or 4.8" version
 - low friction nylon/fiberglass for faster grinding
 - small diameter plastic peg with super thick long-lasting sleeve
 - sold as single
- Weight:**
- 4" - 180g (6.34oz : 0.39lbs) (per piece)
 - 4.5" - 193g (6.80oz : 0.42lbs) (per piece)
 - 4.8" - 210g (7.4oz : 0.46lbs) (per piece)



Éclat Venom peg sleeve
4" (101mm) / 4.5" (114mm) / 4.8" (122mm)

- black
- burgundy
- army green
- purple **NEW**

- Material:** nylon/fiberglass
- Length:** 4" (101mm), 4.5" (114mm) or 4.8" (122mm)
- Outer Diameter:** 38mm
- Color:** black, burgundy (4.5" only), army green (4.5" and 4.8" only), purple (4.5" and 4.8" only)
- Features:**
- available as 4", 4.5" or 4.8" version
 - low friction nylon/fiberglass for faster grinding
 - small diameter plastic peg with super thick long-lasting sleeve
 - sold as single
- Weight:**
- 4" - 66g (2.4oz : 0.14lbs) (per piece)
 - 4.5" - 75g (2.6oz : 0.16lbs) (per piece)
 - 4.8" - 74g (2.6oz : 0.16lbs) (per piece)



wax



Éclat Section wax

● black ● dark gum ● lime

- Material:** low friction wax
- Color:** black, dark gum, lime
- Size:** 82 x 100 x 224mm
- Features:**
- very large breakable block with zipper bag to transport individual sections
 - low-friction nylon/fiberglass for faster grinding
 - 50% more wax, yet small enough to put in your pocket/bag



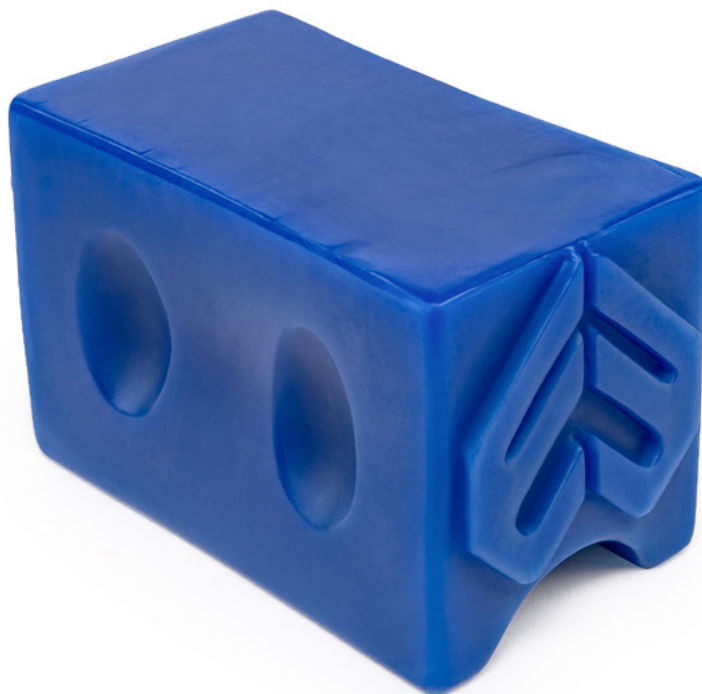
wax

Éclat Team wax

● blue ● red

Éclat

- Material:** low friction wax
Color: blue, red
Size: 70 x 82 x 120mm
Features: • large block of wax with sunken section for better grip



pc pedals



Éclat AK pedal (Alex Kennedy signature pedal)

● black

LIFETIME 
GUARANTEE

Material: injection molded nylon/fiberglass

Size: 9/16"

Bearings: full bushing system

Color: black

- Features:**
- Alex Kennedy signature pedal
 - knurled top surface
 - super tough, long life pedal with fully replaceable parts
 - super strong crmo spindle
 - replaceable universal pedal body design
 - replaceable pins to customise traction
 - **LIFETIME GUARANTEE** on spindles

Weight: 613g (20oz : 1.35lbs) (per pair)



pc pedals

Éclat Plaza pedal

● black

- Material:** injection molded nylon/fiberglass
Size: 9/16"
Bearings: loose ball
Color: black
Features:
- knurled top surface
 - crmo spindle
 - overall wider pedal
- Weight:** 450g (15.87oz : 0.99lbs) (per pair)

Éclat



pc pedals



Éclat Centric pedal **NEW**

● black

● vision camo **NEW**

Material: injection molded nylon/fiberglass

Size: 9/16"

Bearings: loose ball

Color: black, vision camo

Features:

- large platform pedal designed together with input from éclat PRO team riders Dillon Lloyd and Jordan Godwin
- éclat exclusive oversize spindle design and unique crankarm interface with 6mm hex and without wrench flat
- overall wider pedal body and more inward foot position to aid with crankarm grinds and aerial tricks
- reinforced pins for improved traction and durability
- low profile design with thicker ribs for added support

Weight: tba



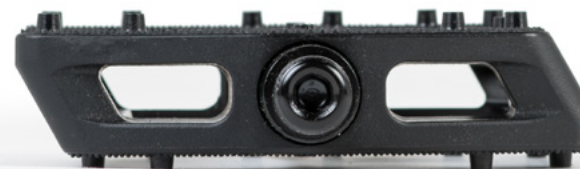
pc pedals

Éclat Seeker pedal

● black ● army green

- Material:** injection molded nylon/fiberglass
- Size:** 9/16"
- Bearings:** sealed bearing
- Color:** black, army green
- Features:**
- stronger spindle design with bushing
 - knurled top surface
 - thinner profile
 - overall wider pedal body
 - replaceable pedal body
 - super smooth high quality bearings
- Weight:** 395g (13.95oz : 0.87lbs) (per pair)

Éclat



pc pedals



Éclat Contra pedal

- black
- army green
- purple **NEW**

- Material:** injection molded nylon/fiberglass
- Size:** 9/16"
- Bearings:** loose ball
- Color:** black, army green, purple
- Features:**
 - knurled top surface
 - replaceable pins on one side to improve pedal life
 - super strong crmo spindle
 - slim lightweight design
- Weight:** 389g (13.72oz : 0.85lbs) (per pair)



pc pedals

Éclat Slash pedal

● black

● purple **NEW**

Éclat

Material: injection molded nylon/fiberglass

Size: 9/16"

Bearings: loose ball

Color: black, purple

Features:

- knurled top surface
- crmo spindle
- slim lightweight design

Weight: 389g (13.72oz : 0.85lbs) (per pair)



alloy pedals



Éclat Slash pedal

● black ● raw

- Material:** cast alloy body, crmo spindle
- Size:** 9/16"
- Bearings:** loose ball
- Color:** black, raw
- Features:**
 - replaceable pins
 - slim lightweight design
- Weight:** 513g (18oz : 1.13lbs) (per pair)



alloy pedals

Éclat Surge pedal

● black ● high polished

- Material:** 6066-t6 alloy cnc body, crmo axle
Size: 9/16"
Bearings: sealed bearing with bushing system & nylon impact ring
Color: black, high polished
Features:
- replaceable pins
 - extremely strong pedal body and bearing
 - updated body with recessed spindle cap
 - extra pack of replaceable pins & nylon impact ring
 - crmo spindle
- Weight:** 423g (14.92oz : 0.93lbs) (per pair)



Éclat



grips



Éclat Pulsar grip (ODI made grip)



- black
- army green
- purple
- gum
- red
- neon red
- grey
- burgundy
- orange
- hot pink

Material: constructed of ODI's proprietary grip compound
Size: 165mm x 29.5mm
Color: black, army green, gum, purple, red, neon red, burgundy, grey, hot pink, orange
Features:

- manufactured by ODI in the USA
- super soft and comfortable long lasting grip
- longer design for today's wider bars

Weight: 168g (5.90oz : 0.37lbs)



grips

Éclat Sean Burns grip (Sean Burns signature grip)



- Material:** K3 - High Performance Rubber Compound
- Hardness:** 25°
- Size:** 152mm x 27mm
- Color:** black
- Features:**
 - incl. Éclat nylon corkx barends with steel shim for longer life
 - designed in conjunction with Sean Burns
 - non-parallel shape designed for hand comfort
 - K3 material for longer life and softer feeling grip
- Weight:** 100g (3.52oz : 0.22lbs) (per pair, without barends)

● black

Éclat



grips



Éclat Bruno grip (Bruno Hoffmann signature grip)



- Material:** K3 - High Performance Rubber Compound
- Hardness:** 25°
- Size:** 164mm x 28mm
- Color:** black, army green, burgundy, gum
- Features:**
 - incl. Éclat nylon corkx barends with steel shim for longer life
 - designed in conjunction with Bruno Hoffmann
 - simple ribbed pattern, thinner diameter
 - Frankfurt skyline on end of the grip
 - K3 material for longer life and softer feeling grip
- Weight:** 100g (3.52oz : 0.22lbs) (per pair, without barends)

- black
- army green
- burgundy
- gum



grips

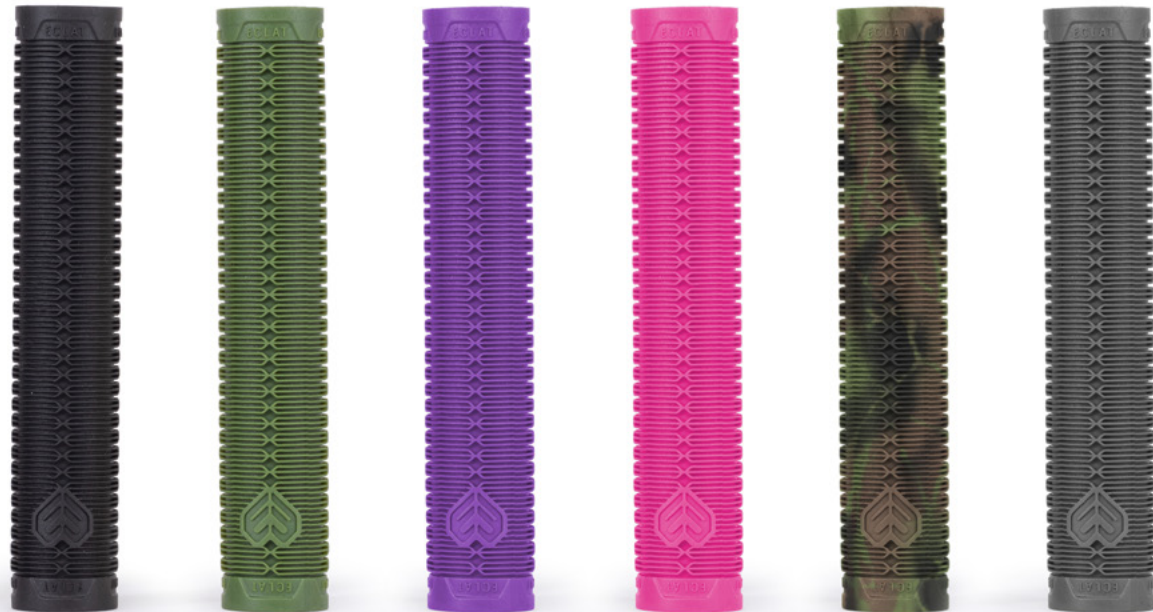
Éclat Shogun grip



- Material:** K3 - High Performance Rubber Compound
- Hardness:** 25°
- Size:** 166.5mm x 29.5mm
- Color:** black, army green, purple, hot pink, camouflage, grey
- Features:**
 - incl. Éclat Tech-Bolt wedge system barend
 - designed in conjunction with Éclat pro team
 - increased length and deeper rib profile
 - K3 material for longer life and softer feeling grip
- Weight:** 97g (3.4oz : 0.21lbs) (per pair, without barends)

- black
- army green
- purple **NEW**
- hot pink **NEW**
- camouflage **NEW**
- grey

Éclat



grips



Éclat Filter grip

● black ● red **NEW** ● gum



- Material:** K3 - High Performance Rubber Compound
- Hardness:** 25°
- Size:** 164mm x 30mm
- Color:** black, red , gum
- Features:**
- incl. Éclat nylon corkx barends with steel shim for longer life
 - simple ribbed pattern, thinner diameter
 - 164mm increased length
 - K3 material for longer life and softer feeling grip
- Weight:** 111g (3.9oz : 0.24lbs) (per pair, without barends)



grips

Éclat ZAP grip



Material: K3 - High Performance Rubber Compound

Hardness: 25°

Size: 190mm x 30mm

Color: black, camouflage, gum

- Features:**
- incl. Éclat nylon corkx barends with steel shim for longer life
 - super long grip designed to be cut to desired length
 - option to run with normal or low flange
 - K3 material for longer life and softer feeling grip

Weight: 168g (5.90oz : 0.37lbs) (per pair, without barends)



black



camouflage **NEW**



gum

Éclat



barends



Éclat Tech-Bolt barend

● black

- Material:** proprietary polypropylen compound
- Color:** black
- Features:**
- expanding wedge cluster barend with 4mm hexbolt
 - super tough material
 - "over the bar"-design for longer life
 - sold as pair
- Weight:** tba



front hubs

Éclat Seismic front hub

● black

● silver polished **NEW**

- Material:** 6061-T6 alloy refined hub shell
- Axle:** 4130 crmo female axle, 3/8" thread
- Bearings:** 2 sealed high quality bearings
- Spokes:** 36h
- Color:** black, silver polished
- Features:**
- strong, grind friendly hub, matching hubshell to Seismic rear hub
 - hex key inner axle for easy maintenance
 - narrow flange for better spoke clearance when grinding
 - includes x2 nylon/fiberglass hub guards
- Weight:** 342g (12oz : 0.75lbs)



Éclat



front hubs



Éclat Cortex front hub

● black

- Material:** 6061-T6 alloy refined hub shell
Axle: 4130 crmo female axle, 3/8" thread
Bearings: 2 sealed high quality bearings
Spokes: 36h
Color: black, high polished
Features:
- strong, grind friendly hub
 - hex key inner axle for easy maintenance
 - narrow flange for better spoke clearance when grinding
 - includes x2 nylon/fiberglass hub guards
- Weight:** 346g (12.2oz : 0.76lbs)



front hubs

Éclat Pulse front hub



black



silver polished

Éclat

- Material:** 6061-T6 alloy refined hub shell
- Axle:** 4130 crmo female axle, 3/8" thread
- Bearings:** 2 sealed high quality bearings
- Spokes:** 36h (3 x 186mm spokes required)
- Color:** black, silver polished
- Features:**
- lightweight design, strong low flange hub
 - hex key inner axle for easy maintenance
- Weight:** 281g (9.9oz : 0.62lbs)



front hubs



Éclat Teck front hub

● black

- Material:** 6061-T6 alloy refined hub shell
Axle: 4130 crmo female axle, 3/8" thread
Bearings: 2 sealed high quality bearings
Spokes: 36h (4 x 192mm spokes required)
Color: black
Features:
 - includes x2 nylon/fiberglass hub guards
 - hex key inner axle for easy maintenance**Weight:** 393g (13.85oz : 0.87lbs)



front hub guards

Éclat Cortex/Seismic front hub guard

● black

Éclat

Material: nylon/fiberglass

Color: black

Features:

- exclusively designed to fit on the Éclat Cortex/Seismic front hub
- threadless, slides smoothly onto pre-existing cone
- will fit Éclat Dynamic front hub, if used with Cortex/Seismic front hub cones
- comes as pair

Weight: 22g (0.8oz : 0.05lbs)



front hub guards



Éclat Pulse crmo front hub guard

● raw

Material: 4140 crmo, full heat-treated

Color: raw

Features:

- exclusively designed to fit on the Éclat Pulse front hub
- shape gives more inside clearance with short offset forks
- threadless, slides smoothly onto axle

Weight: 72g (2.7oz : 0.16lbs)



front hub guards

Éclat Pulse alloy front hub guard

● black

Éclat

Material: 7075-T6 alloy

Color: black

Features:

- exclusively designed to fit on the Éclat Pulse front hub
- shape gives more inside clearance with short offset forks
- threadless, slides smoothly onto axle

Weight: 44g (1.55oz : 0.09lbs)



front hub guards



Éclat Servo universal front hub guard

● raw

Material: 4140 crmo, full heat-treated

Color: raw

Features:

- crmo material is thin enough to fit over existing hardware and fit majority of hubs on the market
- universal design
- super tough and durable heat-treated 4140 crmo, slides better than alloy hub guards

Weight: 76g (2.7oz : 0.17lbs)



front hub guards

Éclat Teck front hub guard

● black

Material: nylon/fiberglass

Color: black

Features:

- exclusively designed for the Éclat Teck front hub
- threadless, slides smoothly over existing cone
- comes as pair

Weight: 17g (0.6oz : 0.03lbs)



Éclat



rear hubs



Éclat Seismic cassette hub

- black
- silver polished **NEW**

- Material:** 6061-T6 alloy hub-shell
- Axle:**
- 14mm male hollow bore
 - hardened heat-treated crmo axle
- Bearings:** 2 high quality hub bearings, 3 driver bearings
- Spokes:** 36h
- Color:** black, silver polished
- Driver:** 9t
- Features:**
- revolutionary Cassette hub using the patented TCS internal system **NEW**
 - low weight, low maintenance hub with super durable internals
 - durable and dependable 3-bearing system driver
 - available in RSD or LSD
 - includes Viper nylon hubguard and Gong driver hubguard
- Weight:** 467g (16.45oz : 1.03lbs)

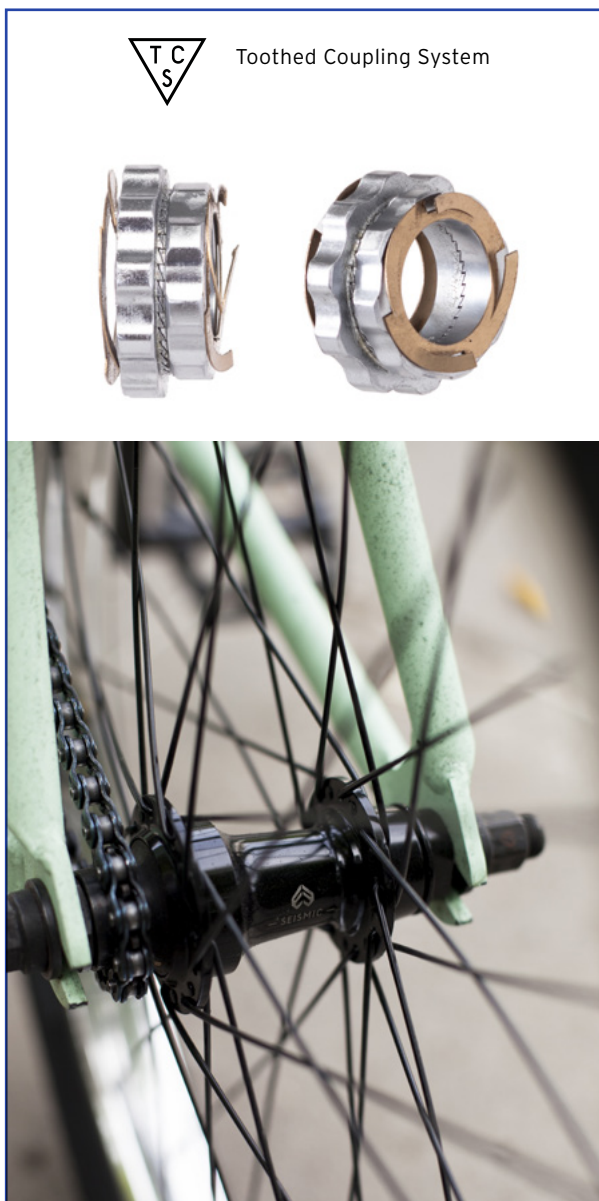


Toothed Coupling System

rear hubs

Éclat Seismic cassette hub

Éclat



rear hubs

Éclat Cortex cassette hub

● black

- Material:** 6061-T6 alloy hub-shell
- Axle:**
- 14mm male hollow bore
 - hardened heat-treated crmo axle
- Bearings:** 2 high quality hub bearings, 3 driver bearings
- Spokes:** 36h
- Color:** black
- Driver:** 9t
- Features:**
- super strong street cassette hub
 - hex key inner axle for easy maintenance
 - durable and dependable 3-bearing system driver
 - available in RSD or LSD
 - includes Viper nylon hubguard and Gong driver hubguard
- Weight:** 608g (21.45oz : 1.34lbs)



rear hubs

Éclat Cortex freecoaster hub

● black

- Material:** 6061-T6 alloy hub-shell
- Axle:**
- 14mm hollow bore axle
 - hardened heat-treated crmo axle
- Bearings:** 2 high quality bearings
- Spokes:** 36h
- Color:** black
- Driver:** 9t
- Features:**
- driver features x2 high quality bearings and a bushing for added support
 - updated 3-point internals allowing smoother crankflip tricks
 - CNC machined cones
 - includes Viper nylon hub guard and Gong driver guard
 - large slack setting pre-installed
 - adjustable slack
 - available in RSD or LSD
 - hex key inner axle for easy maintenance
 - lighter hardware
- Weight:** 671g (23.6oz : 1.47lbs)



Éclat



rear hubs



Éclat Pulse cassette hub



black



silver polished

- Material:** 6061-T6 alloy hub-shell
- Axle:**
- 14mm male axle
 - hardened heat-treated crmo axle
- Bearings:** 2 high quality bearings
- Spokes:** 36h
- Color:** black
- Driver:**
- 9t (8t available separately)
 - driver features full polymer bushing
- Features:**
- RHD & LHD "SDS" system
 - updated ratchet ring design, for improved strength
 - allows switching the driver direction from RSD and LSD with the same hub
 - hex key inner axle for easy maintenance
 - includes Viper nylon hub guard and Gong driver guard
- Weight:** 497g (17.53oz : 1.09lbs)



rear hubs

Éclat Pulse cassette hub



black



silver polished

Éclat

- Material:** 6061-T6 alloy hub-shell
- Axle:**
- 14mm female axle
 - hardened heat-treated crmo axle
- Bearings:** 2 high quality bearings
- Spokes:** 36h
- Color:** black, silver polished
- Driver:**
- 9t (8t available separately)
 - driver features full polymer bushing
- Features:**
- RHD & LHD "SDS" system
 - updated ratchet ring design, for improved strength
 - allows switching the driver direction from RSD and LSD with the same hub
 - hex key inner axle for easy maintenance
 - includes Viper nylon hub guard and Gong driver guard
- Weight:** 497g (17.53oz : 1.09lbs)



rear hub guards



Éclat Viper hub guard

● black

Material: full nylon

Color: black

Features:

- low friction nylon material
- threadless, slides smoothly onto existing cone
- fits on Cortex/Pulse/Dynamic regular & female axle hub

Weight: 39g (1.4oz : 0.08lbs)



rear hub guards

Éclat Servo universal rear hub guard

● raw

Éclat

Material: 4140 crmo, full heat-treated

Color: raw

Features:

- crmo material is thin enough to fit over existing hardware and fit majority of hubs on the market
- universal design

- super tough and durable heat-treated 4140 crmo, slides better than alloy hubguards

Weight: 120g (4.25oz : 0.26lbs)



rear hub guards



Éclat Pulse hub guard

- black
- raw

Material: available as full CNC 7075-T6 alloy or as full CNC 4140 heat-treated crmo

Color: raw (full CNC 4140 heat-treated crmo), black (full CNC 7075-T6 alloy)

- Features:**
- full CNC 7075-T6 alloy hub guard comes with screw-in anti-rotation pin
 - threadless, slides smoothly onto axle
 - fits on Pulse/Dynamic regular & female axle cassette hub

Weight:
full CNC 7075-T6 alloy: 70g (2.46oz : 0.15lbs)
full CNC 4140 heat-treated crmo: 146g (5.2oz : 0.32lbs)



driver guards

Éclat Gong nylon driver guard

● black

- Material:** nylon/fiberglass
Color: black
Features:
- fits onto adapters for perfect hub spacing (adapters available separately)
 - updated shape
- Weight:** 77g (2.7oz : 0.17lbs)



Éclat Gong driver guard

- Material:** full CNC 7075-T6 alloy
Color: black
Features:
- fits onto adapters for perfect hub spacing (adapters available separately)
 - fits over 9t and 8t drivers
- Weight:** 77g (2.7oz : 0.17lbs)



Éclat



driver guards



Éclat Overguard driver guard

● raw

Material: full CNC 4140 crmo, heat-treated

Color: raw

- Features:**
- 100% universal driver guard, mounted to outside of frame dropout
 - RSD/LSD compatible
 - fits over 9t and 8t drivers
 - also works on non-drive side
 - includes two anti-rotation pins

Weight: 141g (5oz : 0.31lbs)



driver guards

Éclat Servo universal driver guard

● raw

Éclat

Material: 4140 crmo, full heat-treated

Color: raw

Features:

- crmo material is thin enough to fit over existing hardware and fit majority of hubs on the market
- universal design, fits over 9t and 8t drivers
- inside shape helps fit majority of aftermarket and OEM frame dropouts, making it perfect for complete bikes
- super tough and durable heat-treated 4140 crmo, slides better than alloy hubguards

Weight: 99g (3.5oz : 0.22lbs)



tires



Éclat Morrow tire (Ty Morrow signature tire)



black



forest green / black side wall

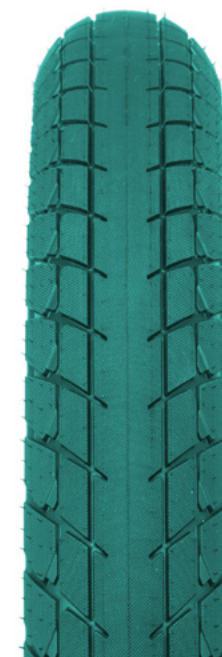
Material: 60 tpi construction, wire bead

Size: 2.40"(62mm)

Color: black, forest green/black sidewall

- Features:**
- Ty Morrow signature tire, all-round tread design
 - high rated pressure 100 PSI
 - special puncture-proof layer for increased durability and protection
 - smooth central area for speed, unique outer tread to increase traction and grip on all surfaces
 - re-enforced special Pangolin sidewall layer for protection against grind damage

Weight: 700g (24.6oz : 1.54lbs)



Page
96

Éclat
—

Parts & Accessories

2 - 0 2 0

tires

Éclat Predator tire (Bruno Hoffmann signature tire)

● black

- Material:** 120 tpi construction, wire bead
- Size:** 2.3"(58mm)
- Color:** black
- Features:**
- Bruno Hoffmann signature tire
 - high rated pressure 100 PSI
 - smooth central area for speed, grippy outer tread to increase traction on wallrides and spinning tricks
 - tough side wall for protection against grind damage
- Weight:** 735g (25.92oz : 1.62lbs)





Éclat Decoder tire

-  **black**
-  **red / black side wall**
-  **white / black side wall**
-  **black / brown skinwall**
-  **army green / brown skinwall**

- Material:** 60 tpi (for 80 PSI version) or 120 tpi (for 120 PSI version) construction, wire bead
- Size:** 2.3" (80 PSI or 120 PSI), 2.4" (80 PSI or 120 PSI)
- Color:**
60 tpi: full black, red with black side wall, white with black side wall
120 tpi: full black, black with brown skinwall, army green with brown skinwall
- Features:**
 - available as 80 PSI Street version and 120 PSI Competition version
 - micro knurling for advanced grip performance
 - tough side wall for protection against grind damage
- Weight:**
2.3" 60tpi: 710g (25oz : 1.56lbs)
2.3" 120tpi: 580g (20.4oz : 1.28lbs)
2.4" 60tpi: 750g (26.4oz : 1.65lbs)
2.4" 120tpi: 630g (22.2oz : 1.39lbs)



DECØDER-80 DECØDER STREET 80-PSI
 DECØDER-120 DECØDER COMPETITION 120-PSI



tires

Éclat Mirage lightweight tire

● black

- Material:** 120 tpi construction, kevlar or wire bead
- Size:** 2.25"(57mm), 2.35"(60mm) or 2.45"(62mm)
- Color:** black
- Features:**
- super lightweight tire
 - high rated pressure 110 PSI
 - dual compound construction
 - regular wire bead or Kevlar folding bead options available
 - specially designed tire thread with a smooth top for speed
 - aggressive sides for corner traction
 - made by Maxxis
- Weight:**
- 2.25" wire bead: 560g (20oz : 1.23lbs)
 - 2.25" kevlar bead: 510g (18oz : 1.12lbs)
 - 2.35" wire bead: 604g (21oz : 1.33lbs)
 - 2.35" kevlar folding bead: 550g (19oz : 1.21lbs)
 - 2.45" wire bead: 650g (23oz : 1.43lbs)
 - 2.45" kevlar folding bead: 590g (21oz : 1.30lbs)



tires



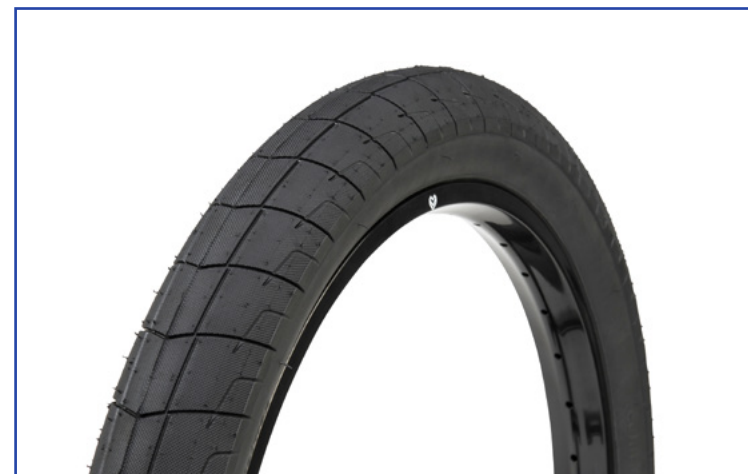
Éclat Fireball tire

- black
- army green / black side wall
- pink / black side wall
- pastel yellow / black side wall
- lilac / black side wall
- black / camouflage side wall

Material: 60 tpi construction, wire bead
Size: 2.3"(58mm) or 2.4"(61mm)
Color: black, army green with black side wall, pink with black side wall, pastel yellow with black sidewall, lilac with black side wall, black with camouflage sidewall
Features:

- pro level street tire
- high rated pressure 100 PSI
- features grind resistant layer on side wall
- puncture resistant nylon layer
- micro knurled surface for increased grip on all surfaces
- re-enforced special Pangolin sidewall layer for protection against grind damage

Weight: 2.3" 737g (25.9oz : 1.62lbs)
2.4" 826g (29.13oz : 1.82lbs)



Éclat Ridgestone slick tire



- Material:** 120 tpi construction, wire bead
- Size:** 2.2"(56mm), 2.3"(59mm) or 2.4"(62mm)
- Color:** black, red with black side wall
- Features:**
- high rated pressure 100 PSI
 - smooth central tread for higher straight line speed
 - deeper tread on the shoulder for better cornering grip
- Weight:**
- 2.2" 699g (24.6oz : 1.54lbs)
 - 2.3" 781g (27.5oz : 1.72lbs)
 - 2.4" 830g (29.2oz : 1.83lbs)



inner tubes



Éclat Helium bmx inner tube

● black

- Material:** lightweight but durable rubber
- Size:** 20" x 1.9" - 2.125" (compatible with larger 2.40" tires)
- Color:** black
- Features:**
- special lightweight 0.6mm rubber
 - perfect for park riders or riders looking to reduce rotating weight
 - Schrader valve
 - sold as single inner tube
- Weight:** 96g (3.38oz : 0.21lbs)



Éclat

Parts & Accessories

2 - 0 2 0

inner tubes

Éclat Tube amp bmx inner tubes

● black

Éclat

- Material:** rubber
- Size:** 20" x 2.1" - 2.4"
- Color:** black
- Features:**
- threaded schrader valve
 - lock ring holds the valves securely in place and prevents valve damage
 - comes in package of 2pcs
 - designed to accommodate for todays wider tires
- Weight:** 200g (7.05oz : 0.44lbs)



spokes



Éclat PG (plain gauge) spokes incl. black nipples ● black

- Material:** 14g stainless steel spokes
- Size:** 182mm, 184mm, 186mm, 188mm, 190mm or 192mm
- Color:** black
- Features:**
 - 40 pcs
 - incl. 16mm black brass nipples
- Weight:** 298g (10.51oz : 0.65lbs) (50 pcs incl. nipples) (length: 184mm)



rim

Éclat Trippin rim



black



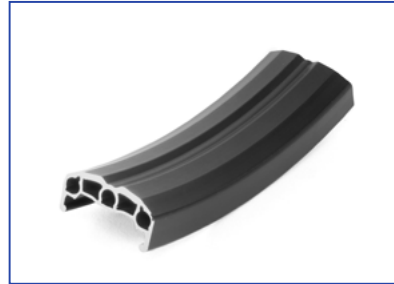
sandblast purple **NEW**



vision camo **NEW**

Éclat

- Material:** 6066-T6 alloy, pin joint (3 pins)
- Size:** 38 x 19mm 36h only
- Color:** black, sandblast purple, real tree camouflage
- Features:**
- mid weight double wall design
 - wider 38mm profile
 - triple pin joint oversized pins
 - straight side walls for brake use
- Weight:** 567g (20oz : 1.25lbs)



rim



Éclat Camber rim

● black

- Material:** 6061-T6 alloy
- Size:** 36.5 x 17.75mm, 36h only
- Color:** black
- Features:**
- available as flash welded or sleeved version
 - very thick wall around spoke holes
 - thick side wall less likely to dent
 - slightly angled but brake compatible side walls
 - wide 36.5mm design
- Weight:**
- sleeved: 510g (17.9oz : 1.12lbs)
 - flash welded: 575g (20.3oz : 1.27lbs)

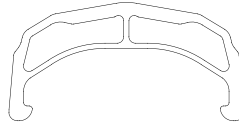


rims

Éclat Raven rim

● black

- Material:** 6069-T6 alloy, flash welded
- Size:** 36 x 18mm 36h only
- Color:** black
- Features:**
- super stiff street rim with unique rim profile
 - strong, lightweight double wall design
 - very thick side walls less likely to dent on hangups
 - taller profile for rigidity but straight side walls for brake use
- Weight:** 505g (17.8oz : 1.11lbs)



Éclat



rim



Éclat Bondi rim

● black

● sandblast purple **NEW**

● vision camo **NEW**

Material: 6066-T6 alloy, flash welded

Size: 38 x 19mm 36h only

Color: black

Features:

- unique wider design with re-inforced side wall
- heavy duty rim for street riders
- straight side walls for brake use

Weight: 538g (18.98oz : 1.18lbs)



rims

Éclat E440 rim **NEW**



black



galactic purple



c.p.

Éclat

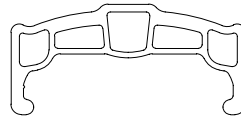
Material: 6061-T6 alloy, flash welded

Size: 34 x 16mm 36h only

Color: black

- Features:**
- super stiff street rim with unique rim profile
 - strong, lightweight double wall design
 - very thick side walls less likely to dent on hangups
 - taller profile for rigidity but straight side walls for brake use

Weight: 440g (15.52oz : 0.97lbs)



rim tape



Éclat Team rim tape

● black

- Material:** rubber with nylon inner core
- Size:** extra wide (30mm)
- Color:** black
- Features:** printed logo detailing
- Weight:** 42g (1.48oz : 0.09lbs) (per pair)



front wheels

Éclat Trippin front wheel

Rim:	Trippin straight wall
Hub:	Cortex front with x2 nylon hubguards
Color:	all black
Features:	<ul style="list-style-type: none">• stainless steel spokes, black nipples• rim tape included
Weight:	tba



Éclat Bondi front wheel

Rim:	Bondi straight wall
Hub:	Cortex front with x2 nylon hubguards
Color:	all black
Features:	<ul style="list-style-type: none">• stainless steel spokes, black nipples• rim tape included
Weight:	tba

Éclat

Éclat Raven front wheel

Rim	Raven straight wall rim
Hub:	Pulse front hub
Color:	all black
Features:	<ul style="list-style-type: none">• stainless steel spokes, black nipples• rim tape included
Weight:	tba



* Éclat Bondi front wheel



front wheels



Éclat E440 front wheel **NEW**

● black

- Rim:** E440 rim
Hub: Seismic front
Color: black
Features:
- stainless steel spokes, black nipples
 - light weight/high-performance wheel
 - inc. x2 nylon hub guards
 - rim tape included
- Weight:** tba



rear wheels

Éclat Trippin cassette rear wheel

● black

- Rim:** 6066-T6 alloy, flash welded
- Hub:** Cortex 9t cassette (14mm male axle), RSD or LSD
- Color:** all black
- Features:**
- unique wider design with re-inforced sidewall
 - heavy duty rim for street riders
 - straight sidewalls for brake use
- Weight:** 538g (18.98oz : 1.19lbs)

Éclat Bondi cassette rear wheel

- Rim:** Bondi straight wall
- Hub:** Cortex 9t cassette (14mm male axle), RSD or LSD
- Color:** all black
- Features:**
- stainless steel spokes, black nipples
 - inc. x2 nylon hub guards
 - rim tape included
- Weight:** tba

Éclat Raven cassette rear wheel

- Rim:** Raven straight wall rim
- Hub:** Pulse 9t cassette (14mm male axle), SDS switch drive system
- Color:** all black
- Features:**
- stainless steel spokes, black nipples
 - rim tape included
- Weight:** tba



* Éclat Trippin cassette rear wheel

Éclat



rear wheels



Éclat E440 rear wheel

NEW

● black

- Rim:** E440 Rim
- Hub:** Seismic 9t cassette (14mm male axle), RSD or LSD
- Color:** all black
- Features:**
- stainless steel spokes, black nipples
 - light weight/high-performance wheel
 - inc. x2 nylon hub guards
 - rim tape included
- Weight:** tba



rear wheels

Éclat Trippin cassette rear wheel



- Rim:** 6066-T6 alloy, flash welded
- Hub:** Cortex 9t cassette (14mm male axle), RSD or LSD
- Color:** all black
- Features:**
- unique wider design with re-inforced sidewall
 - heavy duty rim for street riders
 - straight sidewalls for brake use
- Weight:** 538g (18.98oz : 1.18lbs)

Éclat Bondi cassette rear wheel

- Rim:** Bondi straight wall
- Hub:** Cortex 9t cassette (14mm male axle), RSD or LSD
- Color:** all black
- Features:**
- stainless steel spokes, black nipples
 - inc. x2 nylon hub guards
 - rim tape included
- Weight:** tba

Éclat Raven cassette rear wheel

- Rim:** Raven straight wall rim
- Hub:** Pulse 9t cassette (14mm male axle), SDS switch drive system
- Color:** all black
- Features:**
- stainless steel spokes, black nipples
 - rim tape included
- Weight:** tba



* Éclat Trippin cassette rear wheel



rear wheels



Éclat Trippin freecoaster rear wheel



Éclat Bondi freecoaster rear wheel

- Rim:** Trippin straight wall
Hub: Cortex 9t freecoaster (14mm male axle), RSD or LSD
Color: all black
Features:
- stainless steel spokes, black nipples
 - inc. x2 nylon hub guards
 - rim tape included
- Weight:** tba

- Rim:** Bondi straight wall
Hub: Cortex 9t freecoaster (14mm male axle), RSD or LSD
Color: all black
Features:
- stainless steel spokes, black nipples
 - inc. x2 nylon hub guards
 - rim tape included
- Weight:** tba



* Éclat Trippin freecoaster rear wheel

Éclat Keychain spoke wrench

● black nickel ● gold nickel ● c.p.

- Material:** heat-treated crmo
- Size:** 35x35mm
- Color:** black nickel, gold nickel, c.p.
- Features:**
 - key ring loop
 - for 3.5mm spoke nipples
- Weight:** 38g (1.34oz : 0.08lbs)





Éclat Y-Type hex wrench key

● black

- Material:** crmo hex bits / kraton grip
- Size:** 4, 5 and 6mm hex key wrench
- Features:**
- kraton-rubberised grip area for comfort and control
 - Y-grip profile for improved torque
 - 3-sided Y-wrench
- Weight:** 71g (2.5oz : 0.15lbs)



Éclat hex wrench key

● black

- Material:** crmo
- Size:** 6mm
- Features:** ergonomic rubber grip





Éclat E-Tool multi tool

● black

- Material:** crmo
- Size:** 188x30mm diameter
- Color:** black
- Features:**
- 8/10mm wrench
 - 15mm spoke wrench
 - spoke wrench
 - 13/19mm U brake wrench
 - 3, 4, 5, 6, 8mm hex bit
 - 17mm socket
- Weight:** 541g (19.1oz : 1.19lbs)



promo

Éclat window sticker

Info: large, high quality window sticker
Color: matt metallic copper and black/white
Sizes: 140mm x 140mm and 160mm x 105mm

Éclat big frame sticker set **NEW**

Info: 15 large, high quality, die cut window sticker

Éclat





Éclat authorized dealer sticker

Info: window sticker for serious bmx dealers
Color: matt metallic copper / matt black, glossy neon yellow / glossy black
Sizes: 130mm x 130mm



Éclat sticker pack

Info: 39 assorted sticker





WE MAKE THINGS GmbH
Richard-Byrd-Str. 12
D-50829 Cologne / Germany
Tel: +49 (0)221-500057-20
Fax: +49 (0)221-500057-29
Email: mail@eclatbmx.com