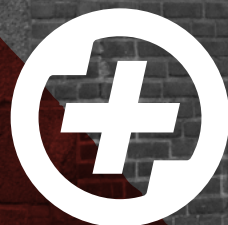


SALTPLUS™ PARTS 2020



WWW.SALTBMX.COM | FOLLOW US ON:



RIDER: LEON HOPPE / PHOTO: AARON TWAAL



PARTS 2020

.....

Ridden by everyone around the world, from BMX PRO's to newcomers, the 2020 **Saltplus** collection brings the latest technology and modern designs down to an affordable price point without sacrificing quality.

Building on our already vast and all-encompassing product line, we're always pushing to have some of the most exciting and unique colorways in BMX, and this year is no exception.

For 2020 you'll find our new **Matt Black/Red Splash** colorway across the line on stems and sprockets, and our own **Forest, Snow** and **Desert Camo** options on our **STING** and **BURN** tires.

With so much more to focus on, lets dive in and check out the entire new collection from **Saltplus BMX**.





SALTPLUS "ECHO" int. headset

Material	6061-T6 alloy top cap
Size	campagnolo (45° x 45°), 41.8mm diameter
Bearings	sealed bearings
Color	black, silver polished, oilslick
Features	high quality "FSA" bearings; alloy top cap, washers, etc. 16mm top cap for taller stack height includes one 5mm spacer
Weight	TBA



**SALTPLUS "EX" fork**

Material	crmo blades, crmo steerer tube
Size	3/8" dropout slot
Color	black, white
Features	28mm hydro formed 1pc crmo steerer tube with (available in black only) or without u-brake mounts available reduced weight and improved tapered blade design redesigned stronger steerer tube with M24 steel topcap
Weight	1148g (40.49oz : 2.53lbs)



SALTPLUS "HQ" fork

Material	full japanese M2 crmo, fully heat-treated
Size	3/8" dropout
Color	black, c.p.
Features	shorter 26mm offset 1 piece cnc crmo steerer tube, with or without u-brake mounts available laser cut crmo dropouts reduced weight and improved tapered blade design integrated crown race, designed for integrated (45° bearing) redesigned stronger steerer tube with M24 alloy topcap
Weight	1047g (36.93oz : 2.30lbs)



SALTPLUS "FIELD" front load stem

Material	full cnc machined 6061-T6 alloy
Reach	50mm
Rise	7mm
Color	black, oilslick
Features	front load design, STC (Shark Tooth Clamping) inside the stem to help grip the bars, 48mm wide faceplate with underside cnc detail for reduced weight
Weight	325g (11.46oz : 0.72lbs)



**SALTPLUS "FIELD" top load stem**

Material	full cnc machined 6061-T6 alloy
Reach	50mm
Rise	23mm
Color	black, oilslick
Features	medium rise, STC (Shark Tooth Clamping) inside the stem to help grip the bars, 48mm wide faceplate with underside cnc detail for reduced weight
Weight	334g (11.78oz : 0.74lbs)



**SALTPLUS "MANTA" top load stem**

Material	full cnc machined 6061-T6 alloy
Reach	50mm
Rise	33mm
Color	black, matt black / red splash, oilslick
Features	super tall rise, STC (Shark Tooth Clamping) inside the stem to help grip the bars, 48mm wide faceplate with central bore for reduced weight
Weight	340g (11.99oz : 0.75lbs)



SALTPLUS "HQ" handlebar

Material	full crmo, multiple butted & post liquid heat treated
Tubing	22.2mm, 19mm crosstube
Size	9" high, 29.3" wide, 11° backsweep, 2° upsweep 10" high, 30" wide, 12° backsweep, 2.5° upsweep
Color	black, c.p.
Features	strong and modern bar with large radius bends
Weight	9" : 869g (30.65oz : 1.92lbs) 10" : 956g (33.7oz : 2.1lbs)



SALTPLUS "HQ" 4pc handlebar

Material	full crmo, plain guage, post liquid heat-treated
Tubing	22.2mm, 19mm crosstube
Size	9" high, 29.5" wide, 11.5° backsweep, 3° upsweep 10" high, 29.5" wide, 11.5° backsweep, 3° upsweep
Color	black, c.p.
Features	strong and modern 4pc bar with large radius bends
Weight	9" : 894g (31.5oz : 1.97lbs) 10" : TBA



**SALTPLUS "XL" grip with flange**

Material	VEX Kraton rubber
Length	162mm
Diameter	29.5mm
Color	black, camouflage
Features	longer grip for today's wider bars includes SALTPLUS push-in bar ends micro flange

SALTPLUS "XL" grip flangeless

Material	VEX Kraton rubber
Length	155mm
Diameter	29.5mm
Color	black, camouflage
Features	longer grip for today's wider bars includes SALTPLUS push-in bar ends

SALTPLUS "GEO XL" u-brake, rear only

Material	6061-T6 melt forged alloy
Color	black
Features	incl. SALTPLUS "Propeller" brake pads and required hardware (bolts, etc.) angled brakearms (usable only for rear) no flex design, wider clearance for wider frames and tires
Weight	189g (6.66oz : 0.41lbs)



**SALTPLUS "ECHO" u-brake, rear only**

Material	6061-T6 cold forged alloy
Color	black, silver polished, oilslick
Features	incl. SALTPLUS "Propeller" clear brake pads and required hardware (bolts, etc.) angled brakearms (usable only for rear) no flex design
Weight	192g (6.77oz : 0.42lbs)



SALTPLUS "GEO XL" brake set

Features	SALTPLUS "GEO XL" u-brake, incl. hanger and brakepads
	SALTPLUS "GEO" brake lever, available as left or right lever
	Salt "AM" brake cable
Color	black
Weight	TBC



SALTPLUS "GEO" brake lever

Material	6061-T6 alloy
Color	black
Features	left or right version available very strong hinged clamp design designed by SALTPLUS
Weight	92g (3.24oz : 0.20lbs)



SALTPLUS "LINEAR" brake cable

Material	cable: 1.5mm slick, pre-stretched stainless inner wire housing: 5mm compressionless, poly-slip lining, linear strands, kevlar protected
Length	130cm (cablehousing)
Color	black
Features	2pcs ferrule (loose) and 2pcs end nipple are included ball and barrel cable nipples
Weight	72g (2.54oz : 0.15lbs)



SALTPLUS "PROPELLER" brake pads

Material	high quality soft rubber compound
Color	black, clear black, clear cyan, clear purple, clear titan
Features	comes with all required hardware (bolts, etc.), mid-length pad size
Weight	54g (1.90oz : 0.11lbs)





SALTPLUS "GEO" rotor

Material	6061-T6 full cnc finish
Color	black, silver polished, oilslick
Features	lighter design, polymer bushing, low stack height
Weight	72g (2.54oz : 0.15lbs)



SALTPLUS "GEO" rotor plates

Material	6061-T6 alloy
Size	5mm thick, 28.8mm ID
Color	black, silver polished, oilslick
Weight	12g (0.42oz : 0.02lbs)



SALTPLUS "DUAL" rotor cable

Material	cable: 1.5mm slick, pre-stretched stainless inner wire
	housing: 5mm compressionless, poly-slip lining
Length	310mm (medium: 350mm, large: 400mm)
Color	black
Features	split double upper rotor cable
Weight	77g (2.71oz : 0.17lbs)



**SALTPLUS "PRO 48" crank**

Material	tubular crmo arms, crmo spindle
Length	165mm, 170mm or 175mm
Bearings	incl. mid size bb set
Spindle	19mm crmo spindle, 48 spline
Color	black, c.p., oilslick
Features	curved trapez shaped crank arms incl. mid size bb set seamless crmo left & right side sprocket bolt boss
Weight	888g (31.32oz : 1.95lbs)



**SALTPLUS "METRON 48" crank**

Material	tubular crmo arms (heat-treated), crmo spindle
Length	165mm or 175mm
Bearings	incl. mid size bb set
Spindle	19mm crmo spindle, 48 spline
Color	black, c.p., oilslick
Features	strong light weight crank w/ 48 spline incl. mid size bb set slimmer triangle shaped crank arm left & right side sprocket bolt boss heat treated seamless crank arms
Weight	952g (33.58oz : 2.09lbs)



**SALTPLUS "ECHO" mid bb set**

Material	alloy cnc cones, sealed bearing
Size	for mid-bb frames, available for 19mm or 22mm spindle
Color	black, silver polished, oilslick
Features	high quality sealed bearings includes cones & spacers to adjust chain-lines on 68, 73 & 74mm bb shells
Weight	235g (8.29oz : 0.52lbs)



SALTPLUS "ECHO" US bb set

Material	alloy cnc cones, sealed bearing
Size	US bb for 19mm spindle
Color	black
Features	high quality sealed bearings in alloy cnc bearing cups includes cones & spacers to adjust chain-lines on 68, 73 & 74mm bb shells
Weight	TBA



Please note: product may vary in appearance!

**SALTPLUS "TRIDENT" sprocket**

Material	6061-T6 alloy, full cnc
Size	25T, 28T
Color	black, oilslick
Features	incl. 19mm & 22mm spindle adapter three spoke design
Weight	25T: 68g (2.39oz : 0.14lbs)



SALTPLUS "CENTER" sprocket

Material	6061-T6 alloy, full cnc
Size	25T, 28T
Color	black, oilslick
Features	incl. 19mm & 22mm spindle adapter
Weight	25T: 58g (2.04oz : 0.12lbs)



**SALTPLUS "MANTA" sprocket**

Material	6061-T6 alloy, full cnc
Size	25T, 28T
Color	black, matt black / red splash, oilslick
Features	incl. 19mm & 22mm spindle adapter four sprocket bolt holes help prolong life by providing multiple rotation points
Weight	25t: 67g (2.36oz : 0.14lb)



**SALTPLUS "SOLIDUS" sprocket**

Material	6061-T6 alloy, full cnc
Size	25T, 28T
Color	black, cd silver, oilslick
Features	incl. 19mm & 22mm spindle adapter super tough street sprocket 6.35mm thick
Weight	TBA



**SALTPLUS "ORION" sprocket guard**

Material	6061-T6 alloy, full cnc
Size	25T, 28T
Color	black, matt black / red splash, oilslick
Features	incl. 19mm & 22mm spindle adapter integrated 8mm thick sprocket guard, two rotation points
Weight	25t: 68g (2.39oz : 0.14lbs)



**SALTPLUS "WARLOCK" half link chain**

Material	steel, chromized treatment, type P121
Size	1/2" x 1/8"
Color	black, c.p., gold, oilslick
Features	lightweight but still very strong very strong pins & plates SALTPLUS embossed logo on links
Weight	447g (15.77oz : 0.98lbs) (100 links)



SALTPLUS "STEALTH" nylon pedal (sealed)

Material	nylon/fiberglass
Size	9/16"
Bearings	x2 sealed bearing plus bushing
Color	black
Features	low friction nylon/pc for pedal grinds SALTPLUS designed and developed shape for stable and grippy foot position replaceable pedal body
Weight	384g (13.54oz : 0.84lbs)





SALTPLUS "STEALTH" nylon pedal (loose ball)

Material	nylon/fiberglass
Size	9/16"
Bearings	loose ball
Color	black, camouflage
Features	low friction nylon/pc for pedal grinds SALTPLUS designed and developed shape for stable and grippy foot position
Weight	409g (14.42oz : 0.88lbs)

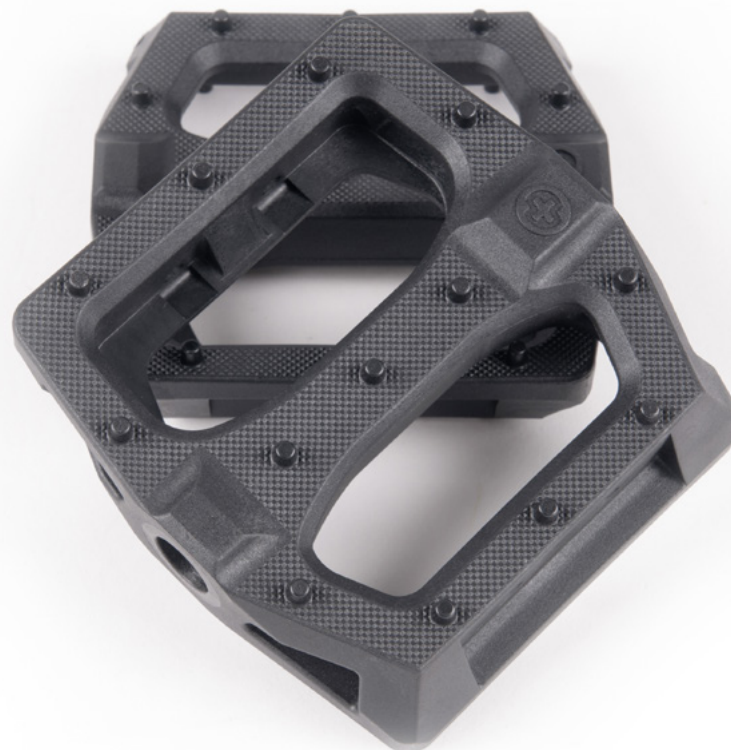


Please note: Product differs slightly from photo!



SALTPLUS "STEALTH" replacement pedal body (sealed)

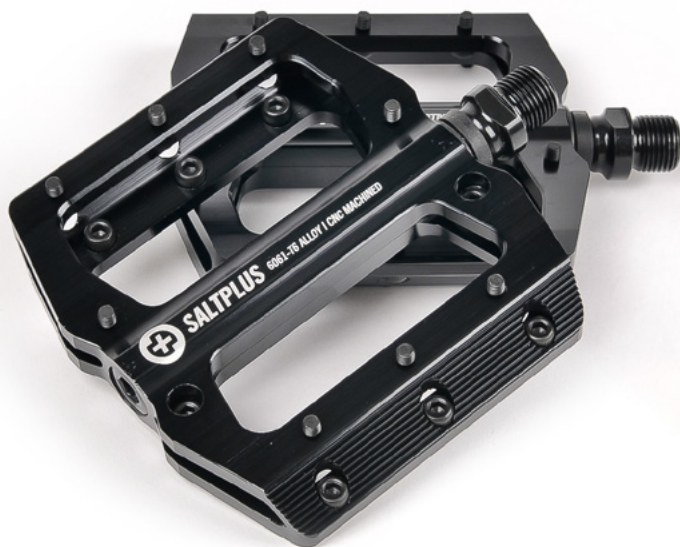
Material	nylon/fiberglass
Bearings	9/16"
Color	loose ball
Features	black, camouflage low friction nylon/pc for pedal grinds SALTPLUS designed and developed shape for stable and grippy foot position
Weight	409g (14.42oz : 0.88lbs)





SALTPLUS "ECHO" alloy cnc pedal

Material	6061-T6 alloy cnc body, crmo axle
Size	9/16"
Bearings	sealed bearing
Color	black, oilslick, silver polished
Features	replacable pins, strong crmo spindle, super slim lightweight design
Weight	492g (17.35oz : 1.085lbs) (per pair)



SALTPLUS "HQ" crmo peg, 1pc

Material	4130 crmo, full cnc butted finish, light weight design, fully liquid heat treated
Size	14mm axle hole with 3/8" adapter
Length	105mm (4.15")
Diameter	36mm
Color	black, c.p
Features	sold as single peg; two anti-rotation holes
Weight	189 g (6.67oz : 0.42lbs)



SALTPLUS "PIVOTAL" seat, slim padded

Material	embossed top cover, plastic bumpers, pivotal system, slim, mid or fat padded versions available
Color	black
Weight	270g (9.52oz)



Please note: product may vary in appearance!

SALTPLUS "PIVOTAL" seat, mid padded

Material	embossed top cover, plastic bumpers, pivotal system, slim, mid or fat padded versions available
Color	black
Weight	305g (10.76oz)



Please note: product may vary in appearance!

SALTPLUS "PIVOTAL" seat, fat padded

Material	embossed top cover, plastic bumpers, pivotal system, slim, mid or fat padded versions available
Color	black
Weight	335g (11.82oz)



Please note: product may vary in appearance!



SALTPLUS "TRAPEZ" front hub

Material	alloy hub shell, crmo 3/8" bolts
Size	3/8" bolts, female axle
Spoke Holes	36h
Bearings	sealed bearing
Color	black, oilslick
Features	slim low flange hub with round shape, cnc cones includes x2 SALTPLUS "PRO" nylon guards
Weight	TBA



SALTPLUS "PRO" nylon front hub guard

Material	nylon
Color	black
Features	pushes onto cone on SALT EX and SALTPLUS Trapez front hubs comes as a pair
Weight	56.7g (2oz : 0.125lbs)



SALTPLUS "TRAPEZ" cassette hub, lsd/rsd switch system (sds)

Material	alloy hub shell, crmo 14mm hollow axle
Size	14mm hollow axle
Spoke Holes	36h
Bearings	high quality sealed bearing
Color	black, matt silver / red splash, oilslick
Driver	9t one piece driver
Features	left side/right side switch system "SDS" incl. x1 SALTPLUS "PRO" nylon rear guard & x1 SALTPLUS "PRO" nylon driver guard slim low flange hub
Weight	TBA



SALTPLUS "VERTEX" freecoaster hub

Material	alloy hub shell, crmo 14mm hollow axle
Size	14mm hollow axle
Spoke Holes	36h
Bearings	2 high quality bearing and bushing driver, high performance durable bearings in hub shell
Color	black, oilslick
Driver	9t, driver features x2 bearings and polymer bushing
Features	long-lasting smooth clutch style mechanism with large slack setting and unique x3 point friction system for easier crankflips incl. x1 SALTPLUS "PRO" nylon rear guard & x1 SALTPLUS "PRO" nylon driver guard adjustable slack (washers included) available in RSD or LSD
Weight	671g (23.6oz)



SALTPLUS "TRAPEZ" 1pc cassette driver

Material	crmo, one piece driver
Size	9t
Version	rsd & lsd compatible "SDS"
Color	black
Driver	driver comes with 3 sealed bearings and c-clip
Features	95g (3.35oz : 0.20lbs)
Weight	572g (20.17oz : 1.26lbs)



SALTPLUS "TRAPEZ" pawls and spring set

Info	4 pawls/springs for SALTPLUS "TRAPEZ" "SDS" cassette hub
Weight	6g (0.21oz : 0.01lbs)



SALTPLUS "VERTEX" freecoaster driver

Material	heat treated crmo
Size	9t
Version	RSD or LSD
Color	black
Features	2 high quality bearing and bushing driver
Weight	TBA



SALTPLUS "VERTEX" freecoaster clutch

Material	heat treated crmo
Info	RSD or LSD
Weight	TBA



SALTPLUS "VERTEX" freecoaster axle

Info	crmo 14mm hollow axle
------	-----------------------



SALTPLUS "PRO" nylon rear hub guard

Material	nylon
Color	black
Features	pushes onto cone on SALT EX rear hub, SALTPLUS Trapez rear hub, SALTPLUS Vertex freecoaster rear hub
Weight	28.3g (1.5oz : 0.06lbs)



SALTPLUS "PRO" nylon driver guard

Material	nylon
Color	black
Features	pushes onto cone on SALT EX rear hub, SALTPLUS Trapez rear hub, SALTPLUS Vertex freecoaster rear hub
Weight	TBA



SALTPLUS "SUMMIT" straight wall rim

Material	6061-T6 alloy
Spoke Holes	36h
ERD	388.8mm
Color	black, silver polished, oilslick
Features	incredibly strong reinforced double wall rim with thicker sidewalls wider 36mm profile for 2.40"+ tires NEW Oversize 3mm pin joint
Weight	TBA



Please note: product may vary in appearance!

SALTPLUS "MESA" straight wall rim

Material	6061-T6 alloy
Spoke Holes	36h
ERD	388.8mm
Color	black, silver polished, oilslick
Features	incredibly strong reinforced double wall rim with thicker sidewalls wider 36mm profile for 2.40"+ tires flash welded
Weight	TBA



Please note: product may vary in appearance!

SALTPLUS "PITCH RAW" tire

Material	quality rubber compound
Size	20" x 2.25"
Color	black
Features	big mixed block tread pattern knurled for improved traction 65psi rated, designed by SALT (exclusive tread)
Weight	790 g (27.86oz : 1.74lbs)



SALTPLUS "PITCH MID" tire

Material	quality rubber compound
Size	20" x 2.2" or 20" x 2.3"
Color	black
Features	big mixed block tread pattern knurled for improved traction 65psi rated, designed by SALT (exclusive tread)
Weight	2.3" : 757g (26.70oz : 1.66lbs)



SALTPLUS "PITCH FLOW" tire

Material	quality rubber compound
Size	20" x 2.2" or 20" x 2.25"
Color	black
Features	smooth tread pattern knurled for improved traction 65psi rated, designed by SALT (exclusive tread)
Weight	20" x 2.2" : 658g (23.21oz : 1.45lbs) 20" x 2.25" : 758g (26.73oz : 1.67lbs)



SALTPLUS "PITCH SLICK" tire

Material	quality rubber compound
Size	20" x 2.25" or 20" x 2.35"
Color	black
Features	smooth tread pattern modern super slick design (exclusive tread) 65psi rated
Weight	2.35" : 793g (27.9oz : 1.74lbs)



**SALTPLUS "STING" tire**

Material	quality rubber compound
Size	20" x 2.30" (black only), 20" x 2.35", 20" x 2.40"
Color	black, hot pink, lilac, black / snow camouflage side wall
Features	exclusive street tread pattern fast centre with grippy outer tread 65psi rated
Weight	20" x 2.30": 655g (1.43lb / 23.03oz) 20" x 2.35": TBA 20" x 2.40": 690g (1.52lb / 24.33oz)



SALTPLUS "BURN" tire

Material	quality rubber compound
Size	20" x 2.30" (black only), 20" x 2.35", 20" x 2.40"
Color	black, desert camouflage
Features	exclusive street tread pattern fast centre with grippy outer tread 65psi rated
Weight	TBA



**SALTPLUS "SUMMIT" front wheel**

Rim	SALTPLUS "SUMMIT" double wall, alloy, straight side walls
Hub	SALT "EX" bolt hub, alloy, sealed bearings, 3/8" bolts, includes x2 SALTPLUS PRO nylon hub guards
Size	20" (36H) or 18" (36H) options available
Color	black
Features	designed by SALTPLUS (exclusive shape)
Weight	1042g (36.76oz : 2.3lbs)

**SALTPLUS "MESA" front wheel**

Rim	SALTPLUS "MESA" double wall, welded alloy, 36h, straight side walls
Hub	SALTPLUS "TRAPEZ" bolt hub, alloy, 36h, sealed bearing, 3/8" bolts, includes x2 SALTPLUS PRO nylon hub guards
Size	20" (36H)
Color	black
Features	designed by SALTPLUS (exclusive shape) welded rim
Weight	966g (34.07oz : 2.13lbs)

**SALTPLUS "SUMMIT" cassette rear wheel**

Rim	SALTPLUS "SUMMIT" double wall, alloy, straight side walls
Hub Guards	x2 SALTPLUS "PRO" nylon hub guards
Hub	Salt "EX" cassette hub, alloy, sealed bearing 14mm axle, 9t driver
Size	20" (36H) or 18" (36H)
Color	black
Features	available as RSD or LSD
Weight	1042g (36.76oz : 2.3lbs)

**SALTPLUS "SUMMIT/VERTEX" freecoaster rear wheel**

Rim	SALTPLUS "SUMMIT" double wall, alloy, 36h, straight side walls
Hub Guards	x2 SALTPLUS "PRO" nylon hub guards
Hub	SALTPLUS "VERTEX" freecoaster hub, 36h, sealed bearing, 14mm axle, 9t
Size	20" (36H)
Color	black
Features	available as RSD or LSD durable clutch style internals
Weight	TBA

**SALTPLUS "MESA/TRAPEZ" cassette rear wheel**

Rim	SALTPLUS "MESA" double wall, welded alloy, 36h, straight side walls
Hub	SALTPLUS "TRAPEZ" cassette hub, 36h, sealed bearing, 14mm axle, 9t driver
Hub Guard	x2 SALTPLUS "PRO" nylon hub guard
Size	20" (36H)
Color	black
Features	SDS (Switch Drive System)
Weight	TBA

**SALTPLUS "MESA/VERTEX" freecoaster rear wheel**

Rim	SALTPLUS "MESA" double wall, welded alloy, 36h, straight side walls
Hub	SALTPLUS "VERTEX" freecoaster hub, 36h, sealed bearing, 14mm hollow axle, 9t driver
Hub Guard	x2 SALTPLUS "PRO" nylon hub guards
Size	20" (36H)
Color	black
Features	available as RSD or LSD durable clutch style internals
Weight	TBA

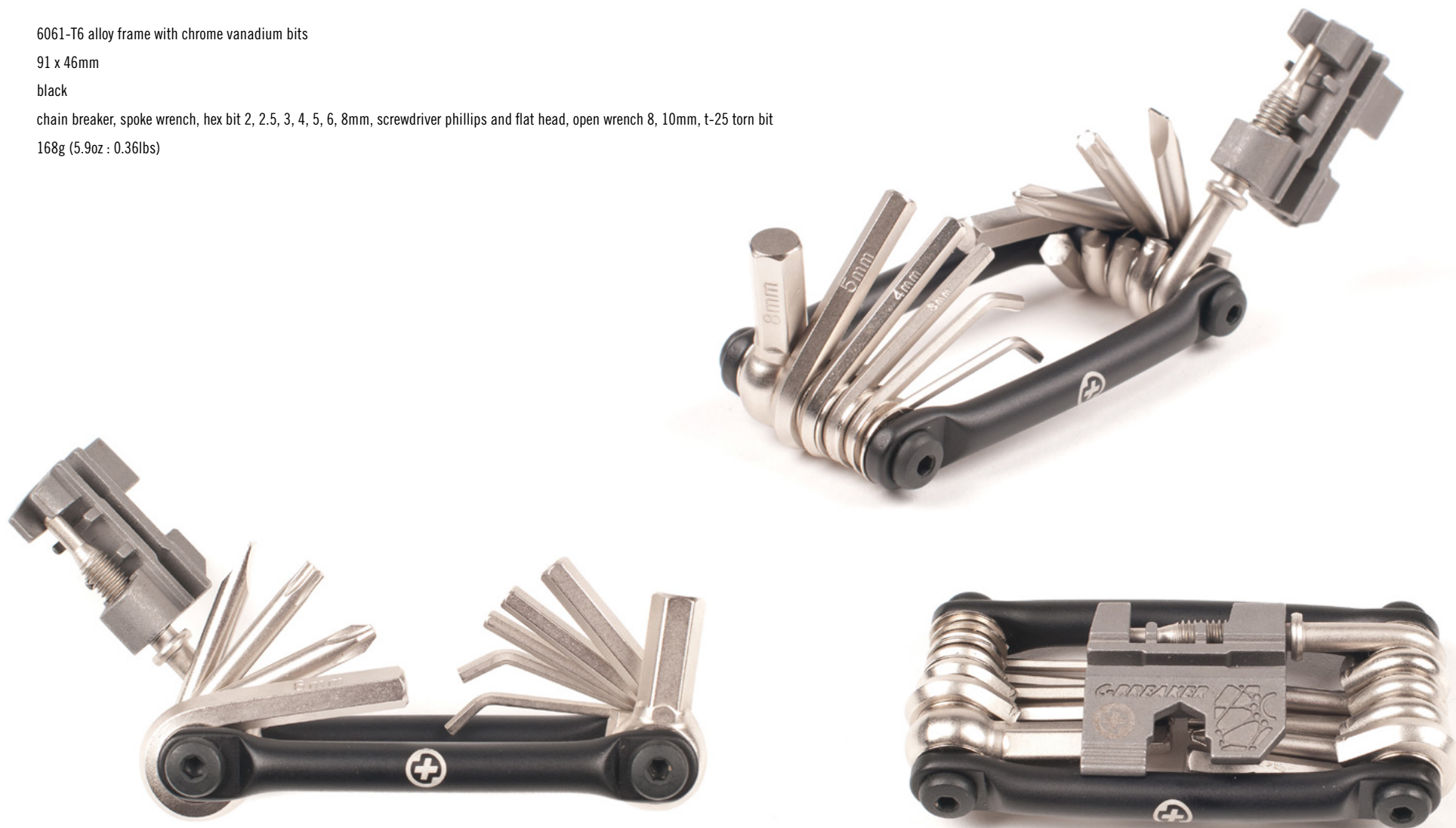
SALTPLUS "PRO" freewheel 13T

Material	hardened chromoly
Size	13t, M30 thread
Color	black
Features	3 pawl internal configuration for greater reliability for use on flip-flop hubs RSD only



SALTPLUS "FLIP" folding multi tool

Material	6061-T6 alloy frame with chrome vanadium bits
Size	91 x 46mm
Color	black
Features	chain breaker, spoke wrench, hex bit 2, 2.5, 3, 4, 5, 6, 8mm, screwdriver phillips and flat head, open wrench 8, 10mm, t-25 torn bit
Weight	168g (5.9oz : 0.36lbs)



SALTPLUS "MINI" foldable pump

Material	high strength nylon and alloy internals
Color	black
Features	super small foldable design, can work with Shrader or Presta valves Inflates up to 140 psi
Weight	TBC





SALTPLUS

WE MAKE THINGS GmbH

Richard-Byrd-Str. 12

D-50829 Cologne / Germany

Tel: +49 (0)221-500057-20

Fax: +49 (0)221-500057-29

Email: mail@saltbmx.com