



**hardgoods &
softgoods**

**winter
2017-2018**

ski culture ad libitum



ski culture ad libitum

A brand of ski
forged in an
uncompromised
spirit and
aesthetic.

a non-conformist spirit

Black Crows is above all a story of friendship, that of evolving freeride skiers in **Chamonix**, **Camille Jaccoux** and **Bruno Compagnet**. Two personalities from the **free skiing** universe, both passionate about mountains and adventure. This passion was translated by their willingness to find skis adapted to their practice in the **Mont-Blanc** massif.

Black crows was born from this intention. It started, firstly, with a ski, the **corvus**, created in 2006 and which went on sale in 2007. A ski with a length of 196cm and 105 at the waist, capable of accelerating without limits in the massif's great powder fields, but also which had the capacity to handle delicate passages encountered in the high mountains. This non-conformist ski was the catalyst for the morphologic evolution of **freeride** skis.

Today, this willingness to explore and discover translates itself in to a range which embraces all the **free ski** domains, from ski-touring to **freeride**, passing by the piste and a special feminine range. Parallel to this development, **black crows** offer numerous accessories, poles, skins, ski-bags and back-packs. For two years, the brand has also ventured in to the production of highly technical textiles with two complete collections aimed at ski-touring and freeride. It is therefore now possible to be equipped from head to to foot by **black crows**, except for footwear, pants and bras, but who knows what the future will hold for us.



avant-garde aesthetic

Inspired by modern art, passing via urban culture, the **black crows** identity is expressed with a modern and exclusive design. Firstly the logo, created by **Yorgo Toupas** of **Yorgo&Co**, is an association of chevrons which remind us of our childhood drawings and symbolises the squadron of **crows**. Simple and geometric, it can be modified into infinity, creating a perspective close to illusion, within the line of optical art. Like this, **black crows** skis are recognisable to everybody. The involvement of **Yorgo&Co**'s Paris design office and more particularly of its founder, **Yorgo Toupas**, in the artistic direction of the brand, manifested the link between urban and skiing universes. This relationship is equally one of the foundations of the company, of having the willingness to surpass classic boundaries between the mountains and the town with a new approach to the mountains.

With the clothing collections, the participation of young well known international designers is witness of this desire to associate technicality with open and unusual aestheticism.

an impeccable quality

Black crows have always associated themselves with the largest manufacturers to design products which are robust and technically irreproachable. Whether it be skis manufactured with the **Elan** and **Atomic** factories, or textiles made in partnership with **GORE-TEX®** and **Polartec®**, the detail of quality is the pillar of the brand.

the art of the descent

Conceived originally exclusively for downhill, the arrival of a **freebird** range aimed at ski-touring and therefore for the ascent has not meant a departure from the multiple requirements of daily use. All our products must be efficient on the descent, whatever the terrain and the conditions which they confront.

the neon demons



To accompany the re-structuring of the **black crows** range to have a clearer, more coherent and long-lasting logic, we simplified our three-dimensional language made by chevrons interlinking in impossible perspectives.

For the **all Mountain** and **big Mountain** ranges, **black crows** generalised a design of ski bi- or tri-chromatic, in a linear form, playing on variants of the thickness of the lines, which anchor the models in a timeless modernity. The universe of the film «Tron» meeting antique Greek friezes in a maze of uncluttered lasers.

For the **resort** skis, the chevrons gain volume due to gradation in solid nuances. The directional dynamics of the surfaces gives an echo of a more alpine and incisive usage.

Freebird perpetuates the monochrome logic, copied but not matching. The **teen** range plays with the fun possibilities of our chevrons, embedded either in a «tetris» group, or in alpine camouflage.

As for previous collections, the **birdie** range plays with more tints which are more feminine and acid while keeping the same graphics as the universal models.

the skier's feathers

The evolution of our textile range perpetrates our wish to develop some technically irreproachable products in a timeless design. Fashioned around our daily use, this new collection extends our desire to meet the needs of skiers in all the degrees of **freeskiing: off-piste, groomed runs, ski-touring and mountain expeditions.**

The **corpus** range is aimed at freeride skiing in the heart of skiable domains and for off-piste, hitting a new level of excellence with this third collection. This maturity strengthens and harmonises as ever the links between the urban universe and the mountain dwelling community.

The **ventus** ranged aimed at mountain skiing and ski-touring, draws its identity from the idea of functionality and minimalism to meet the ultra-specific needs of mountain skiing. And, like with any **black crows'** product, this product could not flourish without a touch of specific style and identity.





the ski in 2018

the ski libre program

resort

hard packed piste



trajectory
elegance
velocity

all-terrain

variable



versatile
playful
wild

big mountain

powder, forest



flotation
animal
wide spaces

backcountry

up & down



lightness
autonomy
exploration

resort

orb



vertis
♥new



arto



all-terrain

navis



daemon
♥new



camox



captis



viator



birdie

atris
birdie
♥new



daemon
birdie
♥new



camox
birdie



captis
birdie



vertis
birdie
♥new



big mountain

nocta



anima



atris
♥new



corvus



specialty

magnis
♥new



junius
♥new



camox
patrol
♥new



orb
patrol
♥new



touring

anima
freebird



corvus
freebird



navis
freebird



camox
freebird



orb
freebird



ova
freebird
♥new



vastus
freebird





it's time to
take back
the piste

Skis for the
groomed runs,
carving, and
going fast.



program :

resort

▼new model :

vertis

“Too long abandoned in the affable and commercial, the piste, is for us, a synonym for wild turns, pulsations and resounding acceleration... while the air whips our faces thirsty for speed.”

~ Camille Jaccoux

model :

orb

program :

resort

authentic
alpine
effective



166.4

tip: 12.0cm
tail: 10.6cm
radius: 18
waist: 9.1

172.1

tip: 12.1cm
tail: 10.7cm
radius: 18
waist: 9.1

178.3

tip: 12.2cm
tail: 10.9cm
radius: 18
waist: 9.1

183.4

tip: 12.4cm
tail: 11.1cm
radius: 18
waist: 9.1

technical infos

Semi-cap construction
Poplar wood core
Double titanal layers
Weight: 3750g/pair
@178

description

This formidable all terrain ski gains speed due to the addition of two titanal plates over the length of the ski. Energetic ski with a bounce which likes going fast, its rocker profile and width makes it very efficient in powder and variable snow conditions.

awards

Tester's choice - Skiing Magazine
Recommended - Realskiers.com

the nitty-gritty

- › Moderate width: 91mm waist.
- › Front rocker: pivot and float.
- › Medium classic camber : classic camber underfoot with moderate ski/snow contact : a good balance between stability and manoeuvrability.
- › Double lengthwise titanal plates: pop and firmness. This ski is a beast.
- › Energetic flex with lots of grip along the whole length of the ski : sporty and high performance.

model :

vertis new

program :

resort

cutting
precise
agile



170.3

tip: 12.7cm
tail: 10.9cm
radius: 15
waist: 8.5

175.4

tip: 12.8cm
tail: 11.1cm
radius: 15
waist: 8.5

180.8

tip: 12.9cm
tail: 11.2cm
radius: 15
waist: 8.5

technical infos

Semi-cap construction
Poplar wood core
Weight: 3350g/pair
@175.4

description

New 'piste' model, the **vertis** is a short radius ski (15 metres), both dynamic and playful. With its 85mm at the waist, it benefits from a very fast edge to edge transition which instigates the pleasure of carving and cutting lines. both accessible and performant due to its intermediary flex, the **vertis** is the quintessential **black crows**' downhill ski.

the nitty-gritty

- › Long classic camber: classic underfoot camber with wide ski/snow contact for cutting downhill turns.
- › Short radius (15 m) and narrow waist (85mm): reactive, edge to edge transition speed, short carving lines.
- › Ski orientated towards 'piste' and changeable snow conditions, very stable with a fast edge to edge transition. Sporty and fun flex. Light rocker (giving stability), small pivot, good edge control, glides well.

model :

arto

program :

resort



177.0

waist: **6.8**
tip: 10.3cm
tail: 8.9cm
radius: 24

183.0

waist: **6.8**
tip: 10.3cm
tail: 8.9cm
radius: 24

technical infos

Sandwich construction
Beech/ash wood core
Double titanal plate
Weight: 3800g/pair
@183

ultra rapid
ultra precise
ultra exclusive

description

Black crows smooth terrain ski.
Giant slalom type ski, technical and aggressive for people in a hurry and ardent supporters of very precise tracks.

the nitty-gritty

- › **Minimal lift:** 68mm at waist.
- › **Good flotation on hard snow:** the paradox may be true.
- › **Total classic camber** without rocker.
- › **Rigid flex:** grips and tones.
- › **Side lines FIS giant slalom style:** possibility of donning a race-bib.





le ski sauvage

Skis for skiing on
and off-piste any
day, whatever
the conditions.



program :

all- terrain

▼ new model :

daemon

*“Black crows skis are for **freeskiing** all terrain. Since the first hour, **Bruno** and I have had the ambition of offering wide, averagely wide and narrow skis, but always with the same spirit: that is to play with the element on all slopes.”*
~ **Camille Jaccoux**

model :

navis

program :

all-terrain

homogenous
precise
comfortable



169.4

tip: 13.1cm
tail: 11.6cm
radius: 19
waist: 10.2

description

With medium width, moderate flex and alpine drive, the **navis** is a big player. The **navis** is an affable, autonomous and high-performance ski, which carves really well, has quick edge-to-edge transition and is very stable on all types of terrain.

179.4

tip: 13.3cm
tail: 11.8cm
radius: 19
waist: 10.2

the nitty-gritty

- › **Nice width:** 102mm waist, giving quick edge-to-edge transition.
- › **Front progressive rocker and tapered sidecut:** good stability on-edge.
- › **Progressive tail and light back rocker:** less tail washout and easier pivot initiation.
- › **Long classic camber:** classic camber underfoot with extensive ski/snow contact for alpine-style turns.
- › **Medium flex:** comfortable and friendly.

185.4

tip: 13.7cm
tail: 12.2cm
radius: 19
waist: 10.2

technical infos

Semi-cap construction
Poplar wood core
Weight: 3850g/pair
@179.4

model :

daemon ▼new

program :

all-terrain

furtive
versatile
powerful



170.2

tip: 12.9cm
tail: 11.7cm
radius: 20
waist: 9.9

description

Perfect blend of titanal and full reverse camber. A very stable ski which goes in to action easily and efficiently due to the full reverse camber. The tonic effect of the flex is counterbalanced by the full reverse camber and allows the **daemon** to combine speed, bounce and easy handling.

177.4

tip: 13.1cm
tail: 11.9cm
radius: 20
waist: 9.9

the nitty-gritty

- › **Titanal plate on two thirds of the ski:** bounce, tonicity, lightness and agility.
- › **Very solid flex under the foot and progressive on tips and heels:** efficient on the edges and good distortion of the extremities in soft snow.
- › **Intermediary paling:** 99mm at the waist.
- › **Full reverse camber:** ease in pivoting and cutting curves.
- › **Side lines enlarge to end of the ski:** stability along the entire edge.

183.6

tip: 13.2cm
tail: 12.0cm
radius: 20
waist: 9.9

188.7

tip: 13.3cm
tail: 12.2cm
radius: 20
waist: 9.9

technical infos

Semi-cap construction
Poplar wood core
Unique 120cm titanal plate
Weight: 3700g/pair
@183.6

model :

camox

program :

all-terrain

precursor
playful
forgiving



174.6

tip: 12.5cm
tail: 11.2cm
radius: 18
waist: 9.7

181.2

tip: 12.7cm
tail: 11.4cm
radius: 18
waist: 9.7

186.1

tip: 13.0cm
tail: 11.5cm
radius: 18
waist: 9.7

technical infos

Semi-cap construction
with step down
Poplar wood core
Carbon/kevlar strips
Weight: 4000g/pair
@181.2

description

Mid-fat, very responsive and tolerant - the **camox** is especially good for all-terrain conditions. The **camox** is a great all-round ski thanks to a tip and tail which are efficient on soft snow and a solid flex underfoot which gives good grip on hardpack.

awards

Official selection - Skiing Magazine
Editor's choice - Freeskier
Tester's choice - Powder Magazine

the nitty-gritty

- › **Medium width:** 97mm waist.
- › **Double rocker:** easy to handle with good control and pivot.
- › **Medium classic camber:** classic camber underfoot with moderate ski/snow contact, giving a good balance between stability and manoeuvrability.
- › **Medium flex, stiff underfoot and softer through the tip and tail:** comfortable during the turn and efficient on all types of terrain.

model :

captis

program :

all-terrain

fun-loving
aerial
responsive



171.1

tip: 11.8cm
tail: 10.9cm
radius: 18
waist: 9.0

178.3

tip: 12.0cm
tail: 11.1cm
radius: 18
waist: 9.0

184.2

tip: 12.2cm
tail: 11.2cm
radius: 18
waist: 9.0

technical infos

Semi-cap construction
Poplar wood core
Weight: 3500g/pair
@178.3

description

Medium width, rapid and vivacious – the **captis** is ideal for resort skiing. A relatively narrow ski the **captis** is very responsive and has quick edge-to-edge transition. the **captis** is very tolerant and nice to ski. A sweetly savage ski.

awards

Top 10 - Fall Line Magazine

the nitty-gritty

- › **Medium width:** 90mm width.
- › **Double rocker:** great manoeuvrability, control and pivot.
- › **Medium classic camber:** classic camber underfoot with moderate ski/snow contact, creating a good balance between stability and manoeuvrability.
- › **Tight sidecut and 17 meter turning radius:** Good for turning. Easy and quick to carve. This ski turns quite tightly.
- › **Tolerant flex:** comfortable and accessible.

model :

viator

program :

all-terrain

versatile
precise
acrobatic



155.1

tip: 11.5cm
tail: 11.1cm
radius: 13
waist: 8.2

165.2

tip: 11.6cm
tail: 11.1cm
radius: 15
waist: 8.4

171.3

tip: 11.7cm
tail: 11.2cm
radius: 16
waist: 8.5

177.2

tip: 11.8cm
tail: 11.4cm
radius: 17
waist: 8.6

technical infos

Cap construction
Poplar wood core
Weight: 3100g/pair
@177.2

description

All-terrain, park or piste – the **viator** offers an everyday, smooth ride suitable for all types of skier. As at ease carving as it is cruising down the piste, riding switch or spinning in the park, the **viator** is easy to ski and suits skiers looking for a super-playful, all terrain toy.

awards

Access Perf - Ski Chrono

the nitty-gritty

- › **Slim width:** 86mm waist.
- › **Double rocker:** highly manoeuvrable, easy to control and pivot.
- › **Medium classic camber:** classic camber underfoot with moderate ski/snow contact: a good balance between stability and manoeuvrability.
- › **Tight sidecut and 17 meter turning radius:** good for turning and helps with learning how to carve.
- › **Light ski:** easy-to-handle and manoeuvrable.
- › **Soft flex:** comfortable and accessible.





free ski

Skis conceived for freeride, or the art of being able to float, surf and attack all types of snow.



program :

big moun- tain

▼ new model :

atris

*“Big mountain skis are the soul of the **black crows**. Big and wide, they are destined for all types of terrain at altitude. If your desire is to attack a good virgin slope, a forest, a summit or take the first bin on a powder day, you are in the right place.”*

~ Camille Jaccoux

model :

nocta

program :

big mountain

unsinkable
playful
light



177.6

tip: 13.9cm
waist: 12.2
tail: 13.2cm
radius: 26

185.5

tip: 14.0cm
waist: 12.2
tail: 13.2cm
radius: 26

190.6

tip: 14.0cm
waist: 12.2
tail: 13.4cm
radius: 26

technical infos

Paulownia-poplar-paulownia
Fiberglass
Semi-cap construction
ABS all around
Weight: 4000g/pair @185.5

description

Great flotation and good handling, the **nocta** is the ultimate toy for big conditions. The association of great float, full reverse camber and straight edges allow the **nocta** to accumulate big flotation in powder, good stability on the edges and a great handling.

awards

Ski of the year - Ski Alper freeride
Editor's pick - Freeskier

the nitty-gritty

- › **Big width:** 122mm waist.
- › **Reverse camber:** easy pivot and easy to carve.
- › **Extended sidecut:** big turning radius, giving stability at high speed.
- › **Moderate flex along the whole ski:** high performance and tolerant.

model :

anima

program :

big mountain

eager
animated
animalistic



176.8

tip: 14.0cm
waist: 11.5
tail: 12.5cm
radius: 21

182.1

tip: 14.2cm
waist: 11.5
tail: 12.6cm
radius: 21

188.4

tip: 14.3cm
waist: 11.5
tail: 12.8cm
radius: 21

194.3

tip: 14.3cm
waist: 11.5
tail: 12.9cm
radius: 21

technical infos

Semi-cap construction with step-down
Poplar wood core
Carbon/kevlar strips
Weight: 4300g/pair @182.1

description

A big mountain ski aligning power and manoeuvrability. The **anima** is a very stable ski and extremely stable at high speed. It will embrace a skiers creativity (big lines, jumps, quick pivot) and keep him on his feet.

awards

Editor's choice
and highest scoring ski - Freeskier
Skier's Choice - Powder
Ski of the Year - Fall Line
Tester's choice - Skieur

the nitty-gritty

- › **Big width:** 115mm width.
- › **Double rocker:** immediate pivot.
- › **Short classic camber:** classic camber underfoot with a short ski/snow contact, giving better manoeuvrability.
- › **Extended sidecut:** big turning radius, giving stability at high speed.
- › **Consistent and progressive tip rise:** good float.
- › **Very progressive flex in the tip and tail, but stiffer where the ski touches the snow:** good distortion in soft snow and efficient on hardpack.

model :

atris ▼new

program :

big mountain

precursor
playful
versatile



178.3

tip: 13.8cm
tail: 12.5cm
radius: 20
waist: 10.8

184.2

tip: 13.9cm
tail: 12.6cm
radius: 20
waist: 10.8

189.7

tip: 14.0cm
tail: 12.6cm
radius: 20
waist: 10.8

technical infos

Semi-cap construction
with step-down
Poplar wood core
Weight: 4000g/pair
@184.2

description

The evolution of the key model is a delicate task. We wanted to make the **atris** more stable at high speed without altering its great handling and playfulness. Our team was successful with this by intervening on three variables: extension of the radius, a softening of the flex and a more progressive heel rise. So, the **atris** has become more easily handled at speed without altering its ease of handling. the new **atris** gallantly opens the doors of a great ski.

awards

Skier's Choice - Powder Magazine
Editor's Choice - Freeskier
Recommended - Realskiers.com
Ski of the Year - Fall Line Magazine

the nitty-gritty

- ▶ **Nice width:** 108 waist.
- ▶ **Double rocker:** immediate pivot.
- ▶ **Medium classic camber:** classic camber underfoot with moderate ski/snow contact, giving a good balance between stability and manoeuvrability.
- ▶ **Slightly extended sidecut (20 meters radius) :** more stability at high speed, balance between firmness and maneuverability.
- ▶ **Progressive tip rise:** good consistency during the turn and easy float.
- ▶ **Stiff and consistent flex:** a very stable ski.

model :

corvus

program :

big mountain

sovereign
alpine
modern



175.1

tip: 13.6cm
tail: 12.0cm
radius: 21
waist: 10.9

183.3

tip: 13.9cm
tail: 12.2cm
radius: 21
waist: 10.9

193.1

tip: 14.1cm
tail: 12.5cm
radius: 21
waist: 10.9

technical infos

Semi-cap construction
Poplar wood core
Weight: 4400g/pair
@183.3

description

A ski for steep-hunters. The combination of a trustworthy tail, stiff flex and progressive front rocker makes the **corvus** a very responsive, no holds barred ski.

awards

Rremarkable Ski - Ski Magazine
Skier's Choice - Powder Magazine

the nitty-gritty

- ▶ **Nice width:** 109mm waist.
- ▶ **Front progressive rocker and low-cut turning radius :** good edge stability.
- ▶ **Progressive tail and light back rocker:** less tail washout and easier pivot initiation.
- ▶ **Long classic camber:** classic camber underfoot with extensive ski/snow contact for alpine-style turns.
- ▶ **21 metre turning radius:** attacking spirit. Stiff flex underfoot, less stiff on the tip and tail, giving comfortable and efficient.



free bird

Lightweight touring skis designed for the ascent without wavering from the demands of the descent.

program :

back country

new model :

ova freebird

hardgoods

“For us, a mountain ski is a simple equation: light, but skiable, reliable and solid.”
~ Bruno Compagnet



model :

anima freebird

program :

backcountry

intense
animated
animal



176.8

tip: 14.0cm
tail: 12.5cm
radius: 21
waist: 11.5

description

Alightened wide ski made for touring accessed freeriding and backcountry skiing. Fat, double rocker and classic camber – your partner in crime for non lift-access pow hunting.

182.1

tip: 14.2cm
tail: 12.6cm
radius: 21
waist: 11.5

awards

Deep freeride choice - Ski Alper
Editor's Choice - Backcountry Magazine

the nitty-gritty

- › **Wide width:** 115mm waist.
- › **Double rocker:** easy to handle and control.
- › **Short classic camber:** classic camber underfoot with a short ski/snow contact: better manoeuvrability.
- › **Longitudinal flex:** easy ski distortion in powder.
- › **Lighter core:** 3.7kg per pair in 182cm.

188.4

tip: 14.3cm
tail: 12.8cm
radius: 21
waist: 11.5

technical infos

Paulownia/poplar/
paulownia woodcore
Mixed glass
and carbon fibre
Semi-cap construction
Weight: 3700g/pair @
182.1

model :

corvus freebird

program :

backcountry

light
big-hearted
powerful



175.1

tip: 13.6cm
tail: 12.0cm
radius: 21
waist: 10.9

description

An energetic, alpine-style, freeride ski-touring ski to keep you in your touring boots all year long (we recommend taking them off for driving though). With a decent width, alpine drive and a front progressive rocker, the **corvus freebird** strikes the perfect balance for hunters of far-off slopes.

183.3

tip: 13.9cm
tail: 12.2cm
radius: 21
waist: 10.9

awards

Editor's Choice - Backcountry Magazine
Ski of the year - Outside
Award - Lebonest.fr
Recommended - Ski Labo

technical infos

Semi-cap construction
Paulownia/poplar/
paulownia wood core
Mixed glass
and carbon fibre
Weight: 3600g/pair
@175.1

the nitty-gritty

- › **Wide width:** 109mm waist.
- › **Front progressive rocker and lightly tapered sidecut :** great carving stability.
- › **Long classic camber:** classic camber underfoot with extensive ski/snow contact for alpine-style turns.
- › **Progressive tail:** less tail washout and easier pivot initiation.
- › **Lighter core:** 3.6kg per pair in 175cm

model :

navis freebird

program :

backcountry

light
wide
playful



169.4

tip: 13.1cm
tail: 11.6cm
radius: 19
waist: 10.2

description

102mm dedicated to adventure. Striking a balance between fatness and skiability, with alpine style and front progressive rocker – the **navis freebird** is shaped for both far-off quests and everyday missions.

179.4

tip: 13.3cm
tail: 11.8cm
radius: 19
waist: 10.2

awards

Editor's Choice - Backcountry Magazine
Ski of the year, freetouring - Ski Alper

the nitty-gritty

- › **Nice width:** 102mm waist.
- › **Front progressive rocker and lightly tapered sidecut** : good carving stability.
- › **Long classic camber:** classic camber underfoot with extensive ski/snow contact for alpine-style turns.
- › **Progressive tail:** less tail washout and easier pivot initiation.
- › **Lighter core:** 3.35kg per pair in 179cm.

185.4

tip: 13.7cm
tail: 12.2cm
radius: 19
waist: 10.2

technical infos

Semi-cap construction
Paulownia/poplar/
paulownia wood core
Mixed glass
and carbon fibre
Weight: 3350/pair
@179.4

model :

camox freebird

program :

backcountry

light
practical
efficient



162.8

tip: 12.2cm
tail: 11.0cm
radius: 18
waist: 9.7

description

Playful flex, classic camber and double rocker – all-terrain pleasure, touring style. With good grip on hardpack, very stable at high speed and playful in powder, the **camox freebird** is an excellent touring set-up for skiers who ski a lot in a wide variety of conditions.

171.4

tip: 12.5cm
tail: 11.2cm
radius: 18
waist: 9.7

awards

Palme d'or - Ski magazine
Touring ski of the year - Fall Line Magazine
Gear Guide selection - Backcountry Magazine
Best freetouring all-rounder - Freerando Mag
Distinction - Escape Magazine

178.1

tip: 12.8cm
tail: 11.4cm
radius: 18
waist: 9.7

the nitty-gritty

- › **Medium width:** 97mm waist.
- › **Progressive front rocker and light back rocker** : good pivot control, easy to handle, good float.
- › **Medium classic camber:** classic camber underfoot with moderate ski/snow contact, giving a good balance between stability and manoeuvrability.
- › **Slightly raised tail:** softness at the end of the turn and practical for touring (helps with putting skins on and for sticking the skis into the snow... not to be sniffed at.)
- › **Medium flex:** a tolerant and comfortable ski.
- › **Lighter core:** 3.2kg per pair in 171cm.

183.2

tip: 13.0cm
tail: 11.5cm
radius: 18
waist: 9.7

technical infos

Semi-cap construction
Paulownia/poplar/
paulownia wood core
Weight: 3200g/pair
@171.4

model :

orb freebird

program :

backcountry

light
authentic
strong



166.4

tip: 12.0cm
tail: 10.6cm
radius: 18
waist: 9.1

description

A new shape and a new core for this excellent high mountain ski. A light, moderately wide and seriously skiable ski made for touring.

awards

Ski Remarquable - Ski Magazine (FR)
Award - Montagne Mag

the nitty-gritty

- › **Moderate width:** 91mm waist.
- › **Front rocker:** pivot and float.
- › **Medium classic camber:** classic camber underfoot with moderate ski/snow contact, giving a good balance between stability and manoeuvrability.
- › **Titanal reinforcement under the bindings:** better hold.
- › **Moderate flex:** a tolerant and comfortable ski.
- › **Plastic insert and cut-out on the tail:** easier to put skins on.

172.1

tip: 12.1cm
tail: 10.7cm
radius: 18
waist: 9.1

178.3

tip: 12.2cm
tail: 10.9cm
radius: 18
waist: 9.1

183.4

tip: 12.4cm
tail: 11.1cm
radius: 18
waist: 9.1

technical infos

Semi-cap construction
Paulownia wood core
Mixed glass and carbon fibre
Titanal reinforcement under bindings
Weight: 2750g/pair@172.1

model :

ova freebird ♥new

program :

backcountry

tough
playful
super light



162.4

tip: 12.0cm
tail: 10.2cm
radius: 17
waist: 8.5

description

Lighter weight and easier to handle, the new **ova freebird** has been carefully modernised. Lighter, they have gained 750 grammes per pair due to a new core entirely composed of paulownia and a mix of fibre glass and carbon, meaning 2kg 250 for the 175cm. As for the shape, a more progressive high rise tail, a softer and more subtle flex allows the **ova freebird** to have increased pivotability while still be a great performer on hard snow.

170.2

tip: 12.2cm
tail: 10.5cm
radius: 17
waist: 8.5

the nitty-gritty

- › **Narrow width:** 85mm waist.
- › **Light rocker:** stability, small pivot, good edge grip, float.
- › **Extra long classic camber:** classic camber underfoot with an extended ski/snow contact for alpine-style turns.
- › **Short turning radius (17m):** very agile on smooth surfaces and crud alike.
- › **Moderate flex:** a tolerant and comfortable ski.

175.2

tip: 12.4cm
tail: 10.6cm
radius: 17
waist: 8.5

180.4

tip: 12.4cm
tail: 10.8cm
radius: 17
waist: 8.5

technical infos

Cap construction
Paulownia wood core
Mixed fibre glass/carbon
Reinforced titanal under the bindings
Weight: 2250g/pair @175.2

model :

vastus freebird

program :

backcountry

light
thin
fast



163.8

waist: **7.6**
tip: 11.0cm
tail: 9.7cm
radius: 17

171.8

waist: **7.6**
tip: 11.3cm
tail: 9.8cm
radius: 17

technical infos

Cap construction
Balsa flax core
Mixed glass carbon fibre
Titanal reinforcement
under bindings
Weight: 1900g/pair
@163.8

description

Made for the climb, this aerial ski is also designed so that gram-counters can have fun on the way down. The combination of light rocker and flat tail makes this ski highly enjoyable on soft snow and gives it precision on crud.

the nitty-gritty

- ▶ **Mini width:** 76mm waist.
- ▶ **Light rocker:** stability, small pivot, float.
- ▶ **Extra long classic camber:** classic camber underfoot with an extended ski/snow contact for alpine-style turns.
- ▶ **Short turning radius (17m):** very agile on smooth surfaces and crud alike.
- ▶ **Moderate flex:** a tolerant and comfortable ski.
- ▶ **Lighter core:** 938g per ski in 163cm (it's time to start counting your calories).



courtship ritual



Skis specifically made for women, the birdies are delicately lighter, subtly more supple and decorated with a certain amount of luminescence.



program :

birdie

model :

camox birdie

Birdies are the black crows' feminine DNA. The same shape and the same intention, they are delicately lighter and more supple than their universal avatars due to a specific fibre. This precious gain in handling is a gauge of endurance pleasure for the feminine form.

*“The **birdie** range for women suits the girl who loves to ski all terrain and is looking for a more playful, modern style of skiing.”*
~ **Camille Jaccoux**

model :

atris birdie ♥new

program :

big mountain

precursor
playful
light



169.1

tip: 13.6cm
waist: 10.8
tail: 12.3cm
radius: 20

178.3

tip: 13.8cm
waist: 10.8
tail: 12.5cm
radius: 20

technical infos

Semi-cap construction with step down
Poplar wood core
Weight: 3550g/pair @178.3

description

Following in the footsteps of its universal avatar, the modernisation of the **atris birdie** concentrated on three variables: lengthening the radius, softening of the flex and accentuating the progressive rise of the tail. Due to this modernisation, the ski is more stable at high speed and edging without altering its handling and playful character. Lighter and subtly more supple in relation to the new **atris**, the **atris birdie** the obvious choice for freeriders looking for a ski which is effective in all snow conditions, whether hard or deep.

awards

Skier's Choice - Powder Magazine
Award - Lebonstest.fr
Official selection - Skiing Magazine
Women Award - Skidor Magazine

the nitty-gritty

- ▶ **Nice width:** 108mm waist.
- ▶ **Double rocker:** immediate pivot.
- ▶ **Medium classic camber:** classic camber underfoot with moderate ski/snow contact, a good balance between stability and manoeuvrability.
- ▶ **Slightly extended sidecut (20 meters radius) :** more stability at high speed, balance between firmness and maneuverability.
- ▶ **Progressive tip rise:** good consistency during the turn and easy float.
- ▶ **Consistent and firm flex but slightly softer than the unisex atris:** a very stable ski.

model :

daemon birdie ♥new

program :

all-terrain

furtive
versatile
handles well



157.4

tip: 12.5cm
waist: 9.9
tail: 11.5cm
radius: 20

164.3

tip: 12.7cm
waist: 9.9
tail: 11.6cm
radius: 20

170.2

tip: 12.9cm
waist: 9.9
tail: 11.7cm
radius: 20

177.4

tip: 13.1cm
waist: 9.9
tail: 11.9cm
radius: 20

technical infos

Semi cap construction
Poplar wood core
100cm titanal layer underfoot
Weight: 3550g/pair @170.2

description

Perfect alliance of titanal and full reverse camber. A very stable ski which is easily to put into action and efficient due to the full reverse camber. The tonicity of the flex is counterbalanced by the full reverse camber which allows the **daemon birdie** to combine speed, bounce and good handling.

the nitty-gritty

- ▶ **Intermediary lift:** 99mm at the waist.
- ▶ **Full reverse camber:** facilitates pivoting and carving lines.
- ▶ **Enlarged edges up to the tip:** total stability throughout the length of the edge.
- ▶ **Titanal plate over two thirds of the ski:** bounce, tonicity, lightness and agility.
- ▶ **Very solid flex under foot and progressive in the tip and heel:** efficient on the edge and good deformation of the extremities in soft snow.

model :

camox birdie

program :

all-terrain

manoeuvrable
playful
forgiving



156.1

tip: 12.0cm
tail: 10.9cm
radius: 18
waist: 9.6

165.2

tip: 12.2cm
tail: 11.0cm
radius: 18
waist: 9.7

174.6

tip: 12.5cm
tail: 11.2cm
radius: 18
waist: 9.7

technical infos

Semi cap construction with step-down
Poplar wood core
Carbon/kevlar strips
Weight: 3300g/pair @165.2

description

Mid-fat, very responsive and tolerant – the **camox birdie** is the all-terrain queen. An excellent balance between the tip and tail make the **camox birdie** very efficient in soft snow and the stiff flex under the bindings gives it great grip on hardpack. This mid-fat ski, which is lighter and softer than its unisex avatar, will be your perpetual ally.

the nitty-gritty

- › **Medium width:** 97mm waist.
- › **Double rocker:** easy to handle with good control and pivot.
- › **Flared tip:** good float in powder and on crud.
- › **Medium classic camber:** classic camber underfoot with moderate ski/snow contact: a good balance between stability and manoeuvrability.
- › **Medium flex:** slightly softer than the unisex **camox**.
- › **Stiff underfoot and softer through the tip and tail:** comfortable during the turn and efficient on all types of terrain.

model :

captis birdie

program :

all-terrain

fun-loving
aerial
responsive



157.3

tip: 11.8cm
tail: 10.6cm
radius: 17
waist: 9.0

164.2

tip: 11.8cm
tail: 10.8cm
radius: 17
waist: 9.0

171.1

tip: 11.8cm
tail: 10.9cm
radius: 18
waist: 9.0

technical infos

Semi-cap construction
Poplar wood wood core
Weight: 2750/pair @157.3

description

Medium width, rapid and vivacious, the **captis birdie** is ideal for resort skiing. The **captis birdie** is relatively narrow making it very responsive and meaning quick edge-to-edge transition. Lighter and softer than the unisex version, this is a women's-only savage ski.

the nitty-gritty

- › **Medium width:** 90mm width.
- › **Double rocker:** great manoeuvrability, control and pivot.
- › **Medium classic camber:** classic camber underfoot with moderate ski/snow contact, giving a good balance between stability and manoeuvrability.
- › **Tight sidecut and 17 meter turning radius:** good for turning. Easy and quick to carve. This ski turns quite tightly.
- › **Tolerant flex and slightly softer than the unisex captis:** comfortable and accessible.

model :

vertis birdie ♥new

program :

resort

biting
precise
agile



152.6

tip: 12.0cm
tail: 10.4cm
radius: 14
waist: 8.5

159.3

tip: 12.2cm
tail: 10.5cm
radius: 14
waist: 8.5

169.6

tip: 12.7cm
tail: 10.9cm
radius: 15
waist: 8.5

technical infos

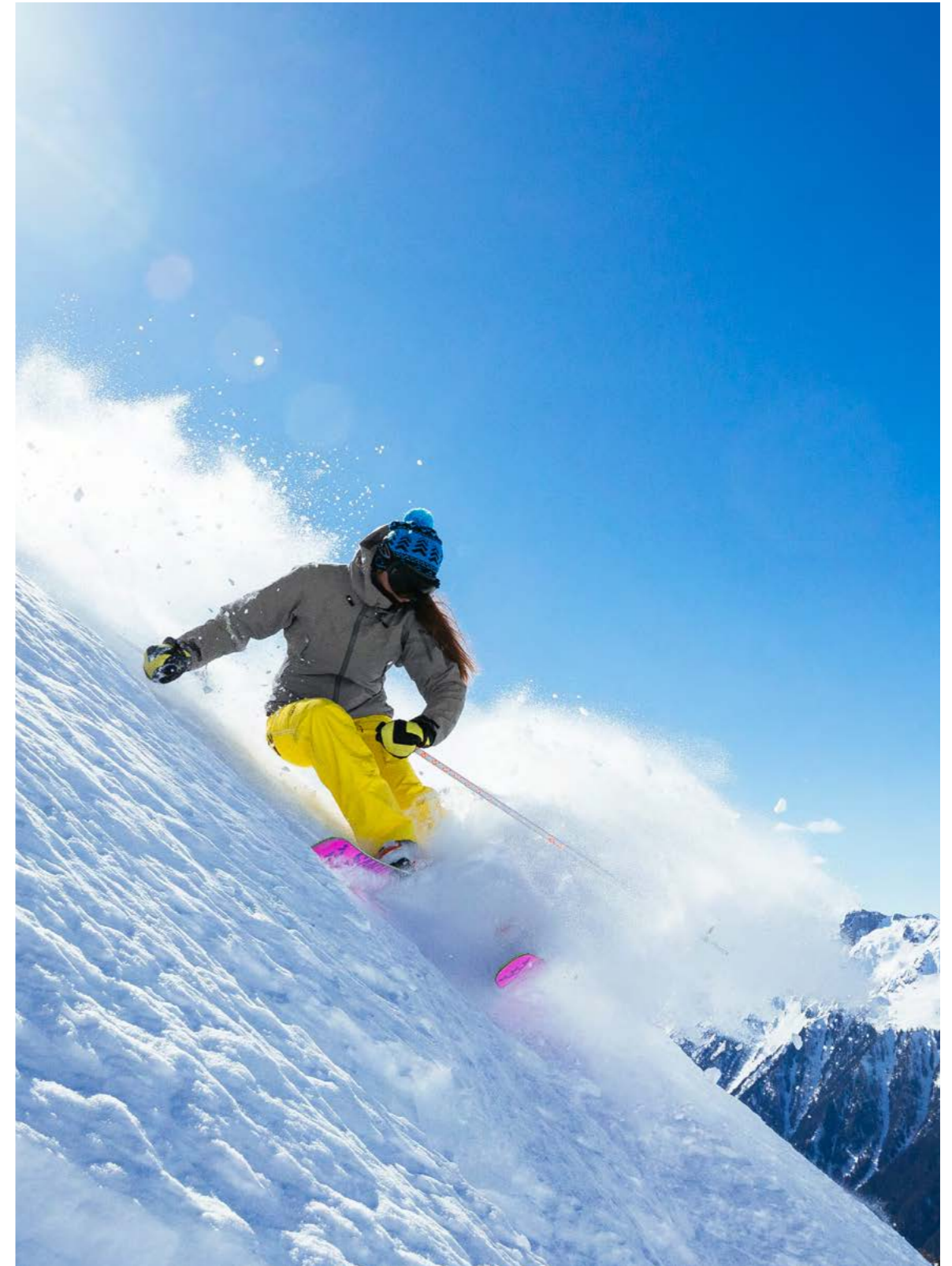
Semi-cap construction
Poplar wood core
Weight: 2650g/pair
@152.6

description

With a lighter wood core and softer flex than its male counterpart, the **vertis birdie** is the ski of choice for girls looking for an accessible yet high performance ski. With its short, 15m radius et 85mm width, the **vertis birdie** is quick edge to edge.

the nitty-gritty

- ▶ **Light float:** 85mm at the waist.
- ▶ **Slight rocker:** stability, small pivot, good edge control, planing.
- ▶ **Long classic camber:** classic underfoot camber with wide snow/ski contact for carving alpine style turns.
- ▶ **Short radius (15m) and tightened waist (85mm):** reactive, fast edge to edge transition short turns.
- ▶ **Ski orientated towards** groomed runs and changeable snow, very stable with a rapid edge to edge transition. Sporty and playful flex.



sharing is caring



program :

rental

▼new model :

vertis RT

Rental is today a synonym for quality. We live in an era of accessibility where experience prevails over ownership, uber, air bnb, spotify, netflix are examples of this.

This is what we want to bring to our rental range. A complete range of iconic models which are strengthened for better durability and adapted to the demands of the clientele of a new generation.

model :

daemon RT ▼new

program :

all-terrain

furtive
versatile
powerful



170.2

tip: 12.9cm
tail: 11.7cm
radius: 20
waist: 9.9

description

Perfect blend of titanal and full reverse camber. A very stable ski which goes in to action easily and efficiently due to the full reverse camber. The tonic effect of the flex is counterbalanced by the full reverse camber and allows the **daemon** to combine speed, bounce and easy handling.

177.4

tip: 13.1cm
tail: 11.9cm
radius: 20
waist: 9.9

the nitty-gritty

- ▶ **Titanal plates on two thirds of the ski:** bounce, tonicity, lightness and agility.
- ▶ **Very solid flex under the foot and progressive on tips and heels:** efficient on the edges and good distortion of the extremities in soft snow.
- ▶ **Intermediary paling:** 99mm at the waist.
- ▶ **Full reverse camber:** ease in pivoting and cutting curves.
- ▶ **Side lines enlarge to end of the ski:** stability along the entire edge.

183.6

tip: 13.2cm
tail: 12.0cm
radius: 20
waist: 9.9

188.7

tip: 13.3cm
tail: 12.2cm
radius: 20
waist: 9.9

technical infos

Semi-cap construction
Poplar wood core
120cm titanal layer underfoot
Reinforced top sheet
Pre-mounted with Salomon
Warden MNC 13 demo
Weight: 3700g/pair @183.6

model :

camox RT

program :

all-terrain

precursor
playful
forgiving



171.4

tip: 12.5cm
tail: 11.2cm
radius: 18
waist: 9.7

description

Very tolerant and reactive mid-fat, the **camox** is the master of all-terrain. Well balanced ski due to very efficient heels and tips in soft snow and a solid under foot flex which gives a good grip on hard snow.

178.1

tip: 12.7cm
tail: 11.4cm
radius: 18
waist: 9.7

awards

Official selection - Skiing Magazine
Editor's choice - Freeskier
Tester's choice - Powder Magazine

183.2

tip: 13.0cm
tail: 11.5cm
radius: 18
waist: 9.7

the nitty-gritty

- ▶ **Medium width:** 97mm waist.
- ▶ **Double rocker:** easy to handle with good control and pivot.
- ▶ **Medium classic camber:** classic camber underfoot with moderate ski/snow contact: a good balance between stability and manoeuvrability.
- ▶ **Medium flex, stiff underfoot and softer through the tip and tail:** comfortable during the turn and efficient on all types of terrain.

technical infos

Semi-cap construction
with step down
Poplar wood core
carbon/kevlar strips
Reinforced top sheet
Flat tail with plastic inserts
Pre-mounted with Salomon
Warden MNC 13 demo
Weight: 4000g/pair @178.1

model :

camox birdie RT

program :

all terrain

manoeuvrable
playful
forgiving



153.1

tip: 12.0cm
tail: 10.9cm
radius: 18
waist: 9.6

162.8

tip: 12.2cm
tail: 11.0cm
radius: 18
waist: 9.7

171.4

tip: 12.5cm
tail: 11.2cm
radius: 18
waist: 9.7

technical infos

Semi-cap construction with step down
Poplar wood core
Carbon/kevlar strips
Reinforced top sheet
Flat tail with plastic inserts
Pre-mounted with Salomon Warden MNC 13 demo
Weight: 3300g/pair @162.8

description

Very tolerant and reactive mid-fat, the **camox birdie** is particularly adapted to all terrains. Well balanced ski due to very efficient heels and tips in soft snow and a solid under foot flex which gives a good grip on hard snow, this mid-fat – lighter and more supple in comparison to its universal adversary – is an unfailing partner.

the nitty-gritty

- › **Medium width:** 97mm waist.
- › **Double rocker:** easy to handle with good control and pivot.
- › **Flared tip:** good float in powder and on crud.
- › **Medium classic camber:** classic camber underfoot with moderate ski/snow contact: a good balance between stability and manoeuvrability.
- › **Medium flex:** slightly softer than the unisex **camox**.
- › **Stiff underfoot and softer through the tip and tail:** comfortable during the turn and efficient on all types of terrain.

model :

captis RT

program :

all-terrain

fun-loving
aerial
responsive



171.1

tip: 11.8cm
tail: 10.9cm
radius: 18
waist: 9.0

178.3

tip: 12.0cm
tail: 11.1cm
radius: 18
waist: 9.0

184.2

tip: 12.2cm
tail: 11.2cm
radius: 18
waist: 9.0

technical infos

Semi-cap construction
Poplar wood core
Reinforced top sheet
Pre-mounted with Tyrolia PRD12 MBS
Weight: 3500g/pair @178.3

description

Medium width, rapid and vivacious – the **captis** is ideal for resort skiing. A relatively narrow ski the **captis** is very responsive and has quick edge-to-edge transition. the **captis** is very tolerant and nice to ski. A sweetly savage ski.

awards

Top 10 - Fall Line Magazine

the nitty-gritty

- › **Medium width:** 90mm width.
- › **Double rocker:** great manoeuvrability, control and pivot.
- › **Medium classic camber:** classic camber underfoot with moderate ski/snow contact, creating a good balance between stability and manoeuvrability.
- › **Tight sidecut and 17 meter turning radius:** Good for turning. Easy and quick to carve. This ski turns quite tightly.
- › **Tolerant flex:** comfortable and accessible.

model :

captis birdie RT

program :

all terrain

fun-loving
aerial
responsive



157.3

tip: 11.8cm
tail: 10.6cm
radius: 17
waist: 9.0

description

Medium width, rapid and vivacious, the **captis birdie** is ideal for resort skiing. The **captis birdie** is relatively narrow making it very responsive and meaning quick edge-to-edge transition. Lighter and softer than the unisex version, this is a women's-only savage ski.

164.2

tip: 11.8cm
tail: 10.8cm
radius: 17
waist: 9.0

the nitty-gritty

- › **Medium width:** 90mm width.
- › **Double rocker:** great manoeuvrability, control and pivot.
- › **Medium classic camber:** classic camber underfoot with moderate ski/snow contact, giving a good balance between stability and manoeuvrability.
- › **Tight sidecut and 17 meter turning radius:** good for turning. Easy and quick to carve. This ski turns quite tightly.
- › **Tolerant flex and slightly softer than the unisex captis:** comfortable and accessible.

171.1

tip: 11.8cm
tail: 10.9cm
radius: 18
waist: 9.0

technical infos

Semi-cap construction
Poplar wood wood core
Reinforced top sheet
Pre-mounted with
Tyrolia PR11 MBS
Weight: 2750/pair @157.3

model :

orb RT

program :

resort

authentic
alpine
effective



166.4

tip: 12.0cm
tail: 10.6cm
radius: 18
waist: 9.1

description

This formidable all terrain ski gains speed due to the addition of two titanal plates over the length of the ski. Energetic ski with a bounce which likes going fast, its rocker profile and width makes it very efficient in powder and variable snow conditions.

172.1

tip: 12.1cm
tail: 10.7cm
radius: 18
waist: 9.1

awards

Tester's choice - Skiing Magazine
Recommended - Realski.com

178.3

tip: 12.2cm
tail: 10.9cm
radius: 18
waist: 9.1

the nitty-gritty

- › **Moderate width:** 91mm waist.
- › **Front rocker:** pivot and float.
- › **Medium classic camber:** classic camber underfoot with moderate ski/snow contact: a good balance between stability and manoeuvrability.
- › **Double lengthwise titanal plates:** pop and firmness. this ski is a beast.
- › **Energetic flex with lots of grip along the whole length of the ski:** sporty and high performance.

183.4

tip: 12.4cm
tail: 11.1cm
radius: 18
waist: 9.1

technical infos

Semi-cap construction
Poplar wood core
Double titanal layers
Reinforced top sheet
Inox tip protector
Pre-mounted with
Tyrolia PRD12 MBS
Weight: 3750g/pair @178.3

model :

vertis RT ▼new

program :

resort

cutting
precise
agile



170.3

tip: 12.7cm
tail: 10.9cm
radius: 15
waist: 8.5

175.4

tip: 12.8cm
tail: 11.1cm
radius: 15
waist: 8.5

180.8

tip: 12.9cm
tail: 11.2cm
radius: 15
waist: 8.5

technical infos

Semi-cap construction
Poplar wood core
Reinforced top sheet
Inox tip protector
Pre-mounted with
Tyrolia PRD12 MBS
Weight: 3350g/pair @175.4

description

New 'piste' model, the **vertis** is a short radius ski (15 metres), both dynamic and playful. With its 85mm at the waist, it benefits from a very fast edge to edge transition which instigates the pleasure of carving and cutting lines. Both accessible and performant due to its intermediary flex, the **vertis** is the quintessential **black crows'** downhill ski.

the nitty-gritty

- › **Long classic camber:** classic underfoot camber with wide ski/snow contact for cutting downhill turns.
- › **Short radius (15 m) and narrow waist (85mm):** reactive, edge to edge transition speed, short carving lines.
- › **Ski orientated towards 'piste'** and changeable snow conditions, very stable with a fast edge to edge transition. Sporty and fun flex. Light rocker (giving stability), small pivot, good edge control, glides well.

model :

vertis birdie RT ▼new

program :

resort

biting
precise
agile



152.6

tip: 12.0cm
tail: 10.4cm
radius: 14
waist: 8.5

159.3

tip: 12.2cm
tail: 10.5cm
radius: 14
waist: 8.5

169.6

tip: 12.7cm
tail: 10.9cm
radius: 15
waist: 8.5

technical infos

Semi-cap construction
Poplar wood core
Reinforced top sheet
Inox tip protector
Pre-mounted with
Tyrolia PR11 MBS
Weight: 2650g/pair @152.6

description

With a lighter core and a more subtle flex in relation to its universal adversary, the **vertis birdie** favoured choice for female skiers who are looking for an accessible and good performing "piste" type ski. With its short radius (15 metres) and 85mm at the waist, it benefits from a rapid edge to edge transition which fuels the pleasure of carving. With three intermediary lengths (152, 162, 169), the **vertis birdie** is our par excellence women's ski.

the nitty-gritty

- › **Light float:** 85mm at the waist.
- › **Slight rocker:** stability, small pivot, good edge control, planing.
- › **Long classic camber:** classic underfoot camber with wide snow/ski contact for carving alpine style turns.
- › **Short radius (15m) and tightened waist (85mm):** reactive, fast edge to edge transition short turns.
- › **Ski orientated towards** groomed runs and changeable snow, very stable with a rapid edge to edge transition. Sporty and playful flex.



the youth and the lifesavers

Brand new for winter 2017/2018, black crows is expanding its collection to a junior collection and offering ski patrol-specific models.



program :

specialty

▼new model :

junius

Our collection of special series models consists of two junior models and two models studied specifically for ski patrollers. The black crows' snow touch is henceforth accessible to the new generations of free skiers and to those who work on the pistes without whom there would be no ski domains

model :

magnis ▼new

program :

specialty

fun-loving
aerial
responsive



157.3

tip: 11.8cm
tail: 10.6cm
radius: 17
waist: 9.0

164.2

tip: 11.8cm
tail: 10.8cm
radius: 17
waist: 9.0

171.1

tip: 11.8cm
tail: 10.9cm
radius: 18
waist: 9.0

technical infos

Semi-cap construction
Poplar wood core
Weight: 2750g/pair
@157.3

description

A ski specifically designed for the generation aged between 14 and 18, the **magnis** is a ski with an intermediary float allaying rapidity and vivacity, aimed at all types of terrain encountered in ski domains, it allies a double rocker, classic camber and a tolerant flex for a ski which is both good to handle and accessible. This wild ski for wild teenagers is available in three sizes (157, 164 and 171).

the nitty-gritty

- ▶ **Double rocker:** great handling, control and pivot.
- ▶ **Middle classic camber:** classic camber under foot with intermediary ski/snow for a perfect balance between placement and handling.
- ▶ **Sharp sidelines and a 17 metre radius:** good turning action, movement to carving is easy and rapid. relatively short turn ski.
- ▶ **Tolerant flex:** comfortable and accessible.
- ▶ **Intermediary float:** 90mm at the waist.

model :

junius ▼new

program :

specialty

playful
wild
fun



130.5

tip: 10.6cm
tail: 10.6cm
radius: 15
waist: 8.0

140.5

tip: 12.1cm
tail: 11.1cm
radius: 11
waist: 8.5

150.5

tip: 12.1cm
tail: 11.1cm
radius: 14
waist: 8.5

technical infos

Cap construction
Foam core
Weight: 2200g/pair
@140.5

description

Our first junior ski aimed at 7-13 year olds focussed on the **black crows** DNA, making a very accessible ski which prioritises the pleasure of skiing. Double tip so that the youngsters can devote themselves, unhindered, to all the subtleties of free skiing, the **junius** is a ski which is made to perform well on all snow conditions. It is available in three sizes (130-140-150).

the nitty-gritty

- ▶ **Intermediary float for kids:** 80-85mm at the waist.
- ▶ **Double rocker:** great handling, control and pivot.
- ▶ **Middle classic camber:** classic camber under foot with intermediary contact ski/snow for a perfect balance between placement and handling.
- ▶ **Short radius:** good movement on the turn which facilitates the learning of carving turns.
- ▶ **Supple flex:** comfortable and accessible.

model :

camox patrol ▼new

program :

specialty

light
practical
durable



171.4

tip: 12.5cm
tail: 11.2cm
radius: 18
waist: 9.7

178.1

tip: 12.7cm
tail: 11.4cm
radius: 18
waist: 9.7

183.2

tip: 13.0cm
tail: 11.5cm
radius: 18
waist: 9.7

technical infos

Semi step down cap construction
Wood paulownia-poplar-paulownia core
Reinforced top sheet
Thicker edges
Weight: 3200g/pair @171.4

description

Playful flex, classic camber and double rocker, the pleasure of an all-terrain in a touring version, bites in to hard snow, very stable at high speed and playful in powder, the **camox freebird** is an excellent touring setup for a person who skis a lot in all conditions. Adversary to the **camox freebird** fitted with specific characteristics to suit the constraints of ski patrollers: edges are thicker and top sheet is strengthened.

the nitty-gritty

- **Intermediary float:** 97mm at the waist
- **Progressive rocker at the front and light back rocker :** controls pivot, handling, planing.
- **Middle classic camber:** classic camber under foot with intermediary ski/snow contact : balance between handling and stability.
- **Slightly raised tail:** soft ending to curves and practical when touring (for putting on skins and sticking skis in to the snow... which is no less a detail).
- **Intermediary flex:** ski tolerant and comfortable.
- **Lightened core:** 3.2 kg/pair 171cm

model :

orb patrol ▼new

program :

specialty

light
dedicated
durable



172.1

tip: 12.1cm
tail: 10.7cm
radius: 18
waist: 9.1

178.3

tip: 12.2cm
tail: 10.9cm
radius: 18
waist: 9.1

183.4

tip: 12.4cm
tail: 11.1cm
radius: 18
waist: 9.1

technical infos

Semi cap construction
Paulownia wood core
Mixed fibre glass/carbon
Titanal reinforcement under bindings
Top sheet reinforced
Thick edges semi cap construction
Weight: 2750g/pair @172.1

description

New shape and new core for this par excellence mountain ski. Light-weight touring type ski, moderately wide, with great ski-ability. Adversary of the orb freebird but with specific characteristics to answer the needs of ski patrollers: thicker edges, reinforced top sheet, titanal plate along the length of the foot for greater reinforcement for fixing the bindings.

the nitty-gritty

- **Intermediary float:** 91mm at the waist.
- **Front rocker:** pivot and planing.
- **Middle classic camber:** classic camber under foot with intermediary ski/snow contact, balance between handling and stability.
- **Reinforced titanal under the bindings :** strengthens fittings for bindings.
- **Intermediary flex:** tolerant and comfortable ski.
- **Tail with plastic insert and notch :** facilitates attaching skins.

light sabres and other toys



range :

poles

model :

furtis

The ski pole is both a melting pot of development on the developmental plan and a very interesting cylindrical object from an aesthetic point of view. Faithful to our creative thread, these classmates of the ski have a strong identity and are the direct inspiration of our daily life. They have the ambition of being elegant and above all answering to all our objectives of functionality and reliability.

In total five models all with their respective grips, diverse tube diameters, fixed or articulated baskets and fixed or removable wrist straps.

resort

firmino
♥new



all-terrain

meta



meta junius
♥new



skins

pellis



backpack

dorsa
♥new



big mountain

oxus



furtis



backcountry

duos



trios



bindings

attack XIII



model :

firmino new

program :

resort



description

Gold is the new black.

Pole designed for ski slopes and similar, the **firmino** is made of an high category aluminium 7075 alloy with a diameter of 16mm. For the fingers, its ergonomic grip is comfortable to hold and it benefits from a new comfortable strap which is easy to manipulate. For the snow the **firmino** has a new very resistant and compact basket. Available in four colours: gold/black, black/yellow, white/pink and black/orange, you are sure to find a pair which match your skis, your outfit... or even better your spirit.

technical infos

- › components: aluminium alloy 7075
- › diameter: 16mm
- › alpine basket
- › weight: 230g/pole @115cm
- › sizes: 110-135



model :

meta

program :

freeride



description

Modern classic.

The **meta** is a classic pole designed for all mountain, piste skiing and freestyle. Unashamedly bright, and fitted with a classic short grip that fits to the shape of the fingers, the **meta** is for girls or guys looking for a reliable pole with a strong identity.

technical infos

- › Components: aluminium alloy 5083
- › Diameter: 18mm
- › Sizes: 110-135
- › Weight: 230g/pole @120 cm



model :

meta junius new

program :

junior freeride



description

Beware: this is not a candy stick.

The small brother of the **meta** are aimed at juniors. with a 16mm diameter, they are a little thinner than their big brothers and benefit from very resistant compact baskets. The **meta junius** has the same ergonomic grip as the **meta** which is comfortable to hold as well as the same classic and robust strap. Available in two colours, fluorescent yellow or white and pink, you won't lose sight of them.

technical infos

- › **Components:** aluminium alloy 5083
- › **Diameter:** 16mm
- › **Sizes:** 80-105
- › **Weight:** 180g/pole @95cm

white pink yellow



model :

OXUS

program :

freeride & mountain



description

Perfect balance.

Designed for long distances and endurance, the **oxus** is a faithful companion on long descents, ski tours or for steep skiing. It will delight anyone who is looking for a very light and highly-resistant classic style ski pole. With its long grip this pole is light, slender and its good equilibrium makes it easy to forget about whilst you're using it.

technical infos

- › **Components:** aluminium alloy 7075-T6
- › **Diameter:** 18mm
- › **Sizes:** 110-135
- › **Weight:** 215g/pole @120cm

yellow white pink



model :

furtis

program :

freeride & mountain



description

Into the hills.

Mat-black and minimalist, the furtis is a robust and well-balanced companion for skiers looking for a light pole they can take to the edge. Pure animal. The **furtis** is now made of 100% composite material developed exclusively by **black crows**, making it extremely resistant to stress while remaining ultra lightweight.

technical infos

- › **Components:** composite
- › **Diameter:** 22mm
- › **Sizes:** 110-135
- › **Weight:** 250g/pole @120cm

model :

duos freebird

program :

mountain



description

2 part telescopic pole.

The **duos freebird** is for the skier looking for a lightweight touring pole that is sturdy and ultra-reliable. From multi-day expeditions to short side-country stashes, this two-part alloy/composite telescopic pole has the perfect blend of features we felt we needed to be fast and mobile in the mountains.

technical infos

- › **Components:** aluminium alloy 7075-T6/composite
- › **Diameter:** 18mm/16mm
- › **Sizes:** unisize adjustable from 110 to 140
- › **Weight:** 245g/pole

model :

trios freebird

program :

mountain



description

3 part telescopic pole.

The **trios freebird** is an extendible 3 and a half section pole made from carbon, aluminium and titanium and designed for ski and snowboard touring and general mountain use throughout the year. With technical characteristics to help you maximize your efficiency and mobility in the mountains, the **trios'** most special feature is its **power lock 3.0** system which allows you to stow it furtively in your bag with a mere flap of your wings.

technical infos

- › **Components:** aluminium alloy 7075-T6/composite
- › **Diameter:** 18mm/16mm
- › **Sizes:** unisize adjustable from 115 to 140
- › **Weight:** 250g/pole



model :

attack XIII



description

Freeskiers prefer equipment which provides control, performance and usability. Not only for clear slopes and untracked powder areas, also for stoked park and half pipe rides. The **aaattack** freeski binding by **Tyrolia** combines functionality and modern design to meet these demands. A perfect tool for all-around skiers who are willing to attack!

technical infos

- › **Weight:** 1940g (with brakes)
- › **Height:** 17mm
- › **DIN:** 4-13



model :

pellis hybrid



description

Black and yellow all over, our skins are shaped and pre-cut according to the shapes of the different **freebird** skis, plus a wide trim-to-fit model. All of our skins are 70% mohair and 30% synthetic material and have been relentlessly in conditions ranging from dry cold to humid heat. Made in Austria, our skins are ultra resistant, lightweight, compact, and easily stored in the bag provided.

technical infos

- › **Components:** 70% mohair, 30% synthetic

› pre-cut model sizes :

- pellis anima freebird** (176/182/188)
- pellis corvus freebird** (175/183)
- pellis navis freebird** (169/179/185)
- pellis camox freebird** (162/171/178/183)
- pellis orb freebird** (166/172/178/183)
- pellis ova freebird** (162/170/175/180)

› trim-to-fit model :

- 120mm - 190cm
- 135mm - 190cm

model :

dorsa 27 ♥new



description

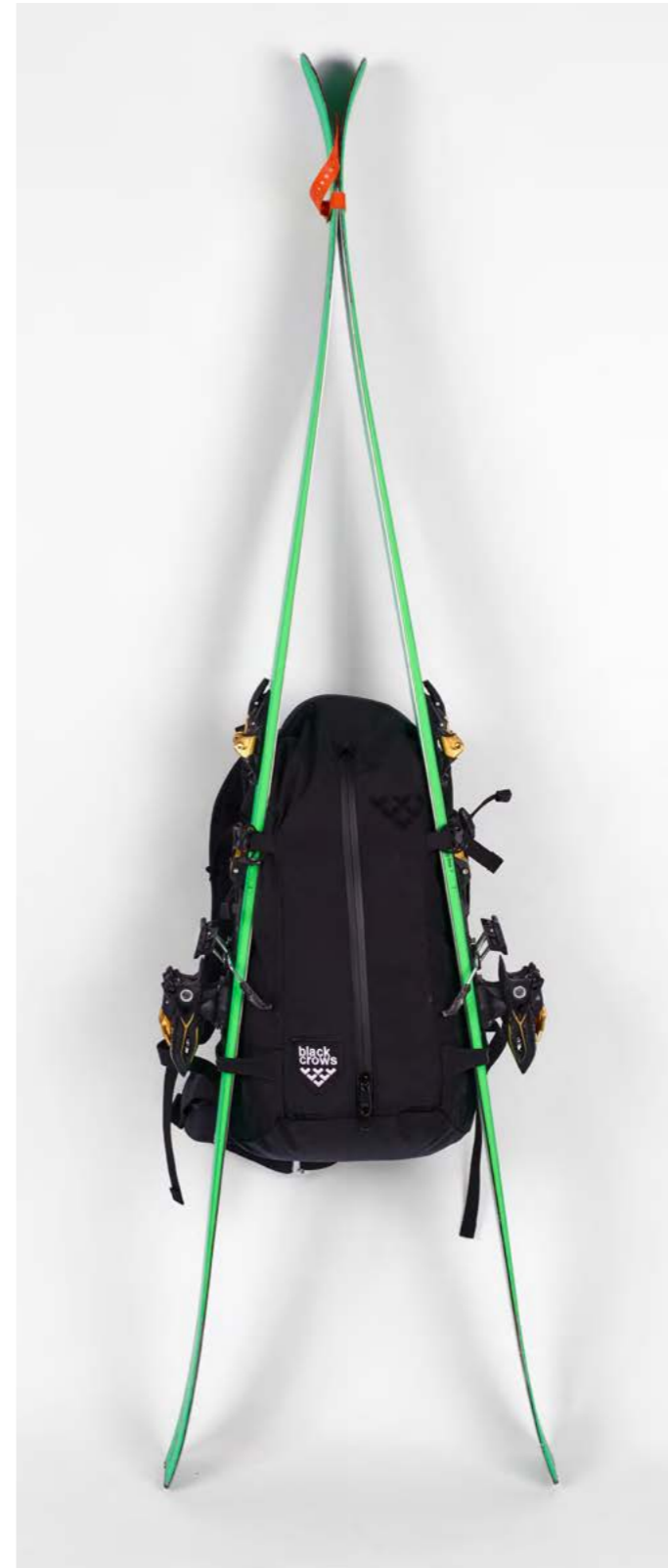
An urban-inspired technical backpack designed to accompany skiers from the ski resort to high alpine routes. Developed in collaboration with **Bruno Compagnet** and the mountain guides of Chamonix, the **dorsa 27** responds to the needs of ski mountaineers: robust, minimal, light. Exactly what you need, nothing you don't.

technical infos

- › **Volume:** 27 liters
- › **Color:** black
- › **Size:** unisize
- › **Material:** cordura® fabrics

Main features :

- › 2 openings, a main roll top to load & a front zip to find something easily at the bottom.
- › 2 ice axe loops.
- › 1 system to carry skis on sides.
- › 1 system to carry skis in diagonal.
- › Comfy shoulder straps with dual density foams removable hipbelt, adjustable with a metal buckle.
- › Sternum strap.
- › Backpanel.
- › Inner pockets for shovel, probe and waterbag.



the main focus is on the grassroots: building a following through people who are most intimately involved with their product: typical skiers.

~ Powder Magazine



men outerwear overview

corpus

GORE-TEX®
3-L jacket & bib pant **♥new**



ventus

GORE-TEX®
3-L jacket & pant



GORE-TEX®
2-L jacket & pant **♥new**



GORE-TEX®
3-L lightweight jacket & pant **♥new**



women outerwear overview

corpus

GORE-TEX®
3-L jacket & pant



ventus

GORE-TEX®
3-L jacket & pant



GORE-TEX®
3-L lightweight jacket & pant **♥new**



the golden age of mountaineering



range :

corpus

The corpus clothing reflects the contrasting art of the black crows: minimalist, and highly technical, discrete with a strong identity.

“It’s made for freeride skiing with all the required features but has a parka look which means it can be worn all winter long around town and for après-ski. Technical with a hint of elegance.”
~ **Camille Jaccoux**

model :

jacket 3-L men ▼new

range :

corpus

Sizes: **S/M/L/XL**

Motto: **jacket: I have nothing to wear**
goggle wipe: this is not toilet paper

description

This new 2018 version of the 3-layer **corpus** developed in partnership with **GORE-TEX®** keeps its unique line but benefits from a new fabric combining protection, breath-ability, durability and suppleness. Inspired by the form of the parka with a fish-tail cut aimed at high mountain skiing, its exterior sobriety contrasts with the detail of its lining. The result is a perfect balance between elegance and precision, **black crows'** contrasting art.

technical infos

- ▶ Removable snow-skirt.
Lens wipe cloth in right-hand chest pocket.
- ▶ Watertight zips. Zipped sleeve pocket.
Under-arm zipped ventilation.
- ▶ Double adjustable hood, helmet compatible.
Interior lycra cuffs.
Brushed jersey inner front collar.
- ▶ Fabric 155gr **GORE-TEX®**, 100% polyamide, 80 denier nylon and textured touch on the outside combines protection, breath-ability, durability and suppleness.
- ▶ Front pockets accessible wearing a backpack. Inside right hand zipped pocket.
Net pocket inside left hand for goggles.
- ▶ Cut mid-length parka, lightly waisted, adjustable fish tail shape.
- ▶ **GORE-TEX®** integrated **RECCO®** reflector. (new finer version)

burgondy

navy

beige



model :

bib pant 3-L men ▼new

range :

corpus

Sizes: **S/M/L/XL**

Motto: **I have nothing to wear**

description

Designed to be associated with the sober colours of the **corpus** jacket, the **corpus** trousers embrace contrasting art. With their energetic colours, minimalist design and their 3-layer **GORE-TEX®** envelope, they leave no place for the non-essentials. The result is an inimitable silhouette cut for the high mountain.

technical infos

- ▶ **GORE-TEX®** fabric 100% polyamide exterior combining protection, breathability, durability and suppleness.
- ▶ Removable bib.
- ▶ Two big semi-lateral pockets.
- ▶ Lift pass pocket at waist-level.
- ▶ Interior chevron-printed snow gaiters, the optimal length for maximum boot buckle accessibility.
- ▶ Interior zipped ventilation with mesh, optimally placed for minimal rubbing.
- ▶ Adjustable waist.
- ▶ Chevron-printed sealing tape.



orange

navy

beige



model :

jacket 3-L women

range :

corpus

Sizes: XS/S/M/L

Motto: jacket: touch me, I want to feel your body
goggle wipe: this is not toilet paper

description

This 3-layer **corpus** developed with **GORE-TEX®** has a unique line. The fabric combines protection, breathability, durability and suppleness. Inspired by the form of the parka with a fish-tail cut aimed at high mountain skiing, its exterior sobriety contrasts with the detail of its lining. The result is a perfect balance between elegance and precision, **black crows'** contrasting art.

technical infos

- › Removable snow-skirt.
Lens wipe cloth in right-hand chest pocket
- › Watertight zips. Zipped sleeve pockets.
Under-arm zipped ventilation.
- › Double adjustable hood, helmet compatible.
Interior lycra cuffs. Brushed jersey inner front collar
- › Fabric 155gr Gore-Tex® 100% polyamide, 70 denier nylon and textured touch on the outside combines protection, breath-ability, durability and suppleness.
- › Front pockets accessible wearing a backpack.
Inside right hand zipped pocket.
Net pocket inside left hand for goggles.
- › Cut mid-length parka, lightly waisted, adjustable fish tail shape.
- › **GORE-TEX®** integrated **RECCO®** reflector



navy



model :

pant 3-L women

range :

corpus

Sizes: XS/S/M/L

Motto: touch me, I want to feel your body

description

Designed to be associated with the sober colours of the **corpus** jacket, the **corpus** trousers embrace contrasting art. With their energetic colours, minimalist design and their 3-layer **GORE-TEX®** envelope, they leave no place for the non-essentials. The result is an inimitable silhouette cut for the high mountain.

technical infos

- › Removable lycra belt for comfort.
- › Watertight zips. Zipped interior ventilation with mesh.
- › Brushed jersey waist lining. Lycra gaiter.
- › Fabric 160gr **GORE-TEX®** 100% polyester, 75 denier nylon and textured touch on the outside combines protection, breath-ability, durability and suppleness.
- › 3 big pockets.
- › 3 adjustment levels on the bottom of the pant: ski position, climb position and apres-ski position. Adjustable waist.
- › **GORE-TEX®** integrated **RECCO®** reflector



pink



model :

jacket 2-L men ▼new

range :

corpus

Sizes: **S/M/L/XL**

Motto: **can I say something**

description

Completely new model, this 2-layer jacket developed with **GORE-TEX®** is aimed at skiing on runs, all terrain and freeride. This elegant technical jacket gives you great freedom of movement and has a 3-layer retractable hood and an integral chevroned lining.

technical infos

- ▶ Fixed snow-skirt.
Lens wipe cloth in right-hand chest pocket.
- ▶ Watertight zips. Under-arm zipped mesh for ventilation.
- ▶ 3-layer retractable hood. Interior lycra cuffs.
Brushed jersey inner front collar.
- ▶ Taffeta lining printed with chevrons.
- ▶ Front pockets accessible wearing a back pack.
Zipped sleeve pocket. Inside right hand zipped pocket. Net pocket inside left hand for goggles.
- ▶ Integrated **RECCO®** reflector (new finer version)



green

black



model :

pant 2-L men ▼new

range :

corpus

Sizes: **S/M/L/XL**

Motto: **can I say something**

description

Aimed at skiing on runs, all-terrain and freeride, the **corpus 2-L** trousers have a clean cut which gives great freedom of movement. Perfect synthesis of elegance and functionality, these trousers are dedicated for all-terrain skiing.

technical infos

- ▶ Removable braces
- ▶ Watertight zips. Internal aeration zips.
- ▶ Lining of breathable mesh. Interior lycra gaiters.
Brushed jersey lining at the waist.
- ▶ 4 pockets.
- ▶ Adjustable waist.
- ▶ Integrated **RECCO®** reflector (new finer version)



green

black



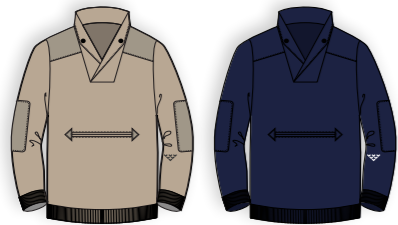
men layering overview

corpus

Primaloft® bomber jacket



Polartec® pullover **♥new**



fleece pullover **♥new**



ventus

Polartec® Powerstretch Pro jacket



Polartec® alpha jacket **♥new**



women layering overview

corpus

Primaloft® bomber jacket



Polartec® pullover **♥new**



fleece pullover **♥new**



ventus

Polartec® Powerstretch Pro jacket



Polartec® alpha jacket **♥new**



model :

primaloft men

range :

corpus

Sizes: **S/M/L/XL**

Motto: **tell me everything about yourself**

description

Inspired by bomber jackets, this padded jacket made with **Primaloft®** silver insulation is an essential element for skiing and peripheral activities. Designed to be worn with, as intermediary layer, with our 3-layer **GORE-TEX®**, it adapts just as well to the town as the mountain.

technical infos

- › Light and anti-blocking zips .
- › Stufferable and storable in the right pocket.
Stretch fabric around the neck and wrists to protect from cold drafts. Water repellant outer fabric. Breathable and insulating materials.
- › 100 % polyester.
Padding **Primaloft®** silver 100.
- › Two zipped hand pockets, plus inner zip pocket.



burgundy

blue

black



model :

primaloft women

range :

corpus

Sizes: **XS/S/M/L**

Motto: **tell me everything about yourself**

description

Inspired by bomber jackets, this padded jacket made with **Primaloft®** silver insulation is an essential element for skiing and peripheral activities. Designed to be worn with, as intermediary layer, with our 3-layer **GORE-TEX®**, it adapts just as well to the town as the mountain.

technical infos

- › Light and anti-blocking zips.
- › Stufferable and storable in the right pocket.
Stretch fabric around the neck and wrists to protect from cold drafts. Water repellant outer fabric. Breathable and insulating materials.
- › 100 % polyester. Padding **Primaloft®** silver 100.
- › Two zipped hand pockets, plus inner zip pocket.



burgundy

black



model :

polartec men new

range :

corpus

Sizes: **S/M/L/XL**
Motto: **body language**

description

Manufactured in collaboration with **Polartec®**, this ski jumper is the indispensable partner for feeling warm while winter skiing or après-ski. The polar acquires new respectability with a nap, a style inspired by the ski jumpers the 90s and with inserts derived from military clothing. A retro look for a technically elegant mountain garment.

technical infos

- › Big collar which can be raised to protect against the cold. Reinforcements on the shoulders and elbows.
- › **Polartec Thermal Pro®** 100% polyester fabric which is brushed inside.
- › Big central zipped pocket.



beige

blue



model :

polartec women new

range :

corpus

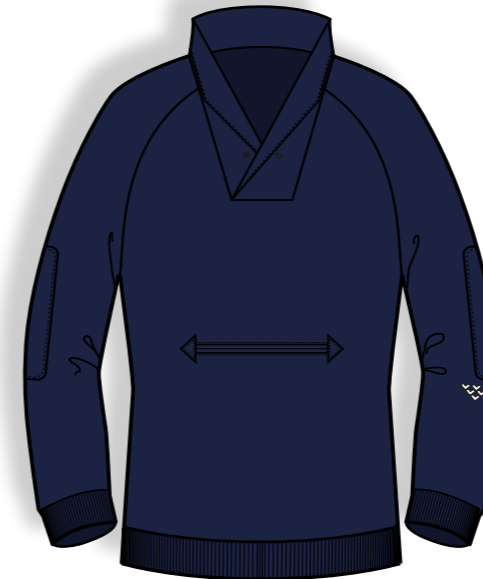
Sizes: **XS/S/M/L**
Motto: **body language**

description

Manufactured in collaboration with **Polartec®**, this ski jumper is the indispensable partner for feeling warm while winter skiing or après-ski. The polar acquires new respectability with a nap, a style inspired by the ski jumpers the 90s and with inserts derived from military clothing. A retro look for a technically elegant mountain garment.

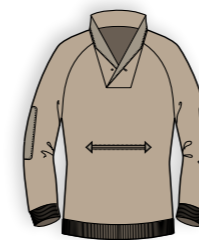
technical infos

- › Big collar which can be raised to protect against the cold. Reinforcements on the shoulders and elbows.
- › **Polartec Thermal Pro®** 100% polyester fabric which is brushed inside.
- › Big central zipped pocket.



beige

blue



model :

fleece men ▼new

range :

corpus

Sizes: **S/M/L/XL**

Motto: **every time you touch me**

description

A warm fleece for wearing as an under layer for skiing and as sports wear throughout the year, the **corpus fleece** with a statutory and classical look is a definite must for the modern skier. Front zip and adjustable hood, technical, waterrepellent finish on the outside, teddy on the inside for extra warmth, the brand logo is on the left arm, a sober style technically dedicated to skiing.

technical infos

- ▶ Full length zip. Mix of simple jersey and waterproof fabric stuck together with a polar wool sherpa 100% polyester lining.
- ▶ 1 chest pocket.



petrol blue

grey heather

mahogany



model :

fleece women ▼new

range :

corpus

Sizes: **XS/S/M/L**

Motto: **every time you touch me**

description

A warm fleece for wearing as an under layer for skiing and as sports wear throughout the year, the **corpus fleece** with a statutory and classical look is a definite must for the modern skier. Front zip and adjustable hood, technical, waterrepellent finish on the outside, teddy on the inside for extra warmth, the brand logo is on the left arm, a sober style technically dedicated to skiing.

technical infos

- ▶ Full length zip.
- ▶ Mix of simple jersey and waterproof fabric stuck together with a polar wool sherpa 100% polyester lining.
- ▶ 2 pockets in side seam



petrol blue

mahogany



there
is no
final
frontier



range :

ventus

The line aimed a ski-tourers, those who like to go and look beyond the summits.

*“The **ventus** has been designed by skiers who spend all winter skiing high up in the mountains and further afield.”*

~ Bruno Compagnet

model :

jacket 3-L men

range :

ventus

Sizes: **S/M/L/XL**
Motto: **let's get naked**

description

Unchanged design for this refined jacket with two very functional big front pockets. This collection is enriched with more urban and timeless colours. The meeting of the high technicality of mountain skiing and the **black crows'** aesthetics.

technical infos

- › Lens wipe cloth in right-hand chest pocket. Loop for attaching a karabiner in the left chest pocket.
- › Watertight zips. Under-arm zipped for ventilation.
- › Doubly adjustable helmet compatible hood. Brushed jersey inner front collar. Interior lycra cuffs.
- › Elasticated silicone band on the bottom casing.
- › 3-layer **GORE-TEX®** 100% polyamide.
- › Fabric is 70 denier, 200gr.
- › Front pockets accessible wearing a back pack. Left sleeve pocket. Inside right hand zipped pocket. Net pocket inside left hand for goggles.
- › Draw-cord in casing at the bottom.
- › **GORE-TEX®** integrated **RECCO®** rescue technology. (new finer version)



light grey

brick red

sycamore



model :

pant 3-L men

range :

ventus

Sizes: **S/M/L/XL**
Motto: **let's get naked**

description

Unchanged design for these trousers dedicated to freedom of movement while touring and equipped with two large functional pockets. This new collection is enriched with more urban and timeless colours.

technical infos

- › External ventilation.
- › Base of legs reinforced with **GORE-TEX®**. Snow gaiter.
- › 3-layer 100% polyamide **GORE-TEX®**.
- › Small lift pass pocket under the belt. 2 big pockets on the sides and one small telephone pocket.
- › Waist with adjustable tightening. 2 closing positions at boot level: ski and walk.
- › **GORE-TEX®** integrated **RECCO®** rescue technology (new finer version)



flame red

bright yellow

off white



model :

jacket 3-L women

range :

ventus

Sizes: **XS/S/M/L**
Motto: **let's get naked**

description

Unchanged design for this refined jacket with two very functional big front pockets. This collection is enriched with more urban and timeless colours. The meeting of the high technicality of mountain skiing and the **black crows'** aesthetics.

technical infos

- › Lens wipe cloth in right-hand chest pocket. Loop for attaching a karabiner in the left chest pocket.
- › Watertight zips. Under-arm zipped for ventilation.
- › Doubly adjustable helmet compatible hood. Brushed jersey inner front collar. Elasticated silicone band on the bottom casing. Interior lycra cuffs.
- › 3-layer **GORE-TEX®** 100% polyamide.
- › Fabric is 70 denier, 200gr.
- › Front pockets accessible wearing a back pack. Left sleeve pocket. Inside right hand zipped pocket. Net pocket inside left hand for goggles.
- › Draw-cord in casing at the bottom.
- › **GORE-TEX®** integrated **RECCO®** rescue technology



light grey

brick red



model :

pant 3-L women

range :

ventus

Sizes: **XS-S-M-L**
Motto: **let's get naked**

description

Unchanged design for these trousers dedicated to freedom of movement while touring and equipped with two large functional pockets. This new collection is enriched with more urban and timeless colours.

technical infos

- › External ventilation zips.
- › Base of legs reinforced with **GORE-TEX®**. Snow gaiter.
- › 3-layer 100% polyamide **GORE-TEX®**.
- › Small lift pass pocket under the belt. 2 big pockets on the sides and one small telephone pocket.
- › Waist with adjustable tightening. 2 closing positions at boot level: ski and walk.
- › **GORE-TEX®** integrated **RECCO®** rescue technology



flame red

neon yellow



model :

light 3-L men ▼new

range :

ventus

Sizes: **S/M/L/XL**
Motto: **I had a rough day**

description

In strict collaboration with **GORE-TEX®**, we have developed a new model aimed to be lightweight with a **C-KNIT™** backer. More breathable and comfortable, this mix gives a better weight/resistance balance and makes the **ventus 3-L light** the ideal jacket for touring and long climbs.

technical infos

- ▶ Watertight zips. Under arm ventilation zips.
- ▶ Double adjustable helmet compatible hood. Elasticated silicone band in casing at the bottom. Refined wrist fastening. Brushed jersey on front of collar.
- ▶ 3-layer 100% Polyamide **GORE-TEX®** with **C-KNIT™** lining, breathable, comfortable, light and resistant.
- ▶ Fabric is 70 denier, 200gr.
- ▶ Zipped sleeve pocket. Big vertical exterior chest pocket on the left. Small exterior horizontal pocket on right chest. 2 big interior net pockets for storing skins.
- ▶ **GORE-TEX®** integrated **RECCO®** rescue technology (new finer version)

light orange

imperial blue

black



model :

light 3-L men ▼new

range :

ventus

Sizes: **S/M/L/XL**
Motto: **I had a rough day**

description

In strict collaboration with **GORE-TEX®**, we have developed a new model aimed to be lightweight with a **C-KNIT™** backer. More breathable and comfortable, this mix gives a better weight/resistance balance and makes the **ventus 3-L light** the ideal trousers for touring and long climbs.

technical infos

- ▶ Watertight zips. Ventilation zips on the outside of the pant, no mesh, for extra cooling purposes.
- ▶ Lycra snow-gaiter. Interior belt in brushed tricot.
- ▶ 3-layer 100% Polyamide **GORE-TEX®** with **C-KNIT™** lining, breathable, comfortable, light and resistant.
- ▶ 2 big pockets.
- ▶ Adjustable waist.
- ▶ **GORE-TEX®** integrated **RECCO®** rescue technology (new finer version)

light orange

imperial blue

black



model :

light 3-L women ▼new

range :

ventus

Sizes: XS/S/M/L

Motto: I had a rough day

description

In strict collaboration with **GORE-TEX®**, we have developed a new model aimed to be lightweight with a **C-KNIT™** backer. More breathable and comfortable, this mix gives a better weight/resistance balance and makes the **ventus 3-L light** the ideal jacket for touring and long climbs.

technical infos

- ▶ Watertight zips. Under arm ventilation zips.
- ▶ Double adjustable helmet compatible hood. Elasticated silicone band in casing at the bottom. Refined wrist fastening. Brushed jersey on front of collar.
- ▶ 3-layer 100% Polyamide **GORE-TEX®** with **C-KNIT™** lining, breathable, comfortable, light and resistant.
- ▶ Fabric is 70 denier, 200gr.
- ▶ Zipped sleeve pocket. Big vertical exterior chest pocket on the left.
- ▶ 2 big interior net pockets for storing skins.
- ▶ **GORE-TEX®** integrated **RECCO®** rescue technology (new finer version)

light orange

imperial blue

black



model :

light 3-L women ▼new

range :

ventus

Sizes: XS/S/M/L

Motto: I had a rough day

description

In strict collaboration with **GORE-TEX®**, we have developed a new model aimed to be lightweight with a **C-KNIT™** backer. More breathable and comfortable, this mix gives a better weight/resistance balance and makes the **ventus 3-L light** the ideal trousers for touring and long climbs.

technical infos

- ▶ Watertight zips. Ventilation zips on the outside of the pant, no mesh, for extra cooling purposes.
- ▶ Lycra snow-gaiter. Interior belt in brushed tricot.
- ▶ 3-layer 100% Polyamide **GORE-TEX®** with **C-KNIT™** lining, breathable, comfortable, light and resistant.
- ▶ 2 big pockets.
- ▶ Adjustable waist.
- ▶ **GORE-TEX®** integrated **RECCO®** rescue technology (new finer version)

light orange

imperial blue

black



model :

alpha men new

range :

ventus

Sizes: **S/M/L/XL**
Motto: **weather it out**

description

Key piece for the mountains, the **Polartec Alpha** can be used equally as an inner layer or an outer layer for touring. Made of **Polartec Alpha** which accumulates heat, lightness, comfort and breathable qualities, we wanted to bring an urban touch to this very functional garment with an uncluttered front and a padded fabric in chevrons on the shoulders, sleeves and hood.

technical infos

- ▶ Outer 92% polyamide and 8% elastane stretch fabric in inside and outside.
- ▶ **Polartec Alpha** lining allying lightness, insulation. Even in the case of humidity, quick drying and high breathability.
- ▶ 2 zipped waist pockets and 1 chest pocket.
- ▶ Lower drawstring.



beige

black



model :

alpha women new

range :

ventus

Sizes: **XS/S/M/L**
Motto: **weather it out**

description

Key piece for the mountains, the **Polartec Alpha** can be used equally as an inner layer or an outer layer for touring. Made of **Polartec Alpha** which accumulates heat, lightness, comfort and breathable qualities, we wanted to bring an urban touch to this very functional garment with an uncluttered front and a padded fabric in chevrons on the shoulders, sleeves and hood.

technical infos

- ▶ Outer 92% polyamide and 8% elastane stretch fabric in inside and outside.
- ▶ **Polartec Alpha** lining allying lightness, insulation. Even in the case of humidity, quick drying and high breathability.
- ▶ 2 zipped waist pockets and 1 chest pocket.
- ▶ Lower drawstring.



beige

black



model :

powerstretch men

range :

ventus

Sizes: **S/M/L/XL**
Motto: **je parle français**

description

Same style, same technical characteristics and an additional two colours for the 2018 **Polartec® Power Stretch**. Technical piece, stretches, breathable, very soft and comfortable, this zipped fleece is an indispensable partner for ski touring. Always at the bottom of the pack in case of cold, it can also be worn après ski due to its elegant style and reinforced chevron style shoulders.

technical infos

- ▶ Retro inserts on the chest.
- ▶ 240 gr. **Polartec Powerstretch Pro**
53% polyester, 38% nylon, 9% spandex.
- ▶ Two waist pockets. 1 small chest pocket.
- ▶ Adjustable hood.



blue

dark grey



model :

powerstretch women

range :

ventus

Sizes: **XS/S/M/L**
Motto: **je parle français**

description

Same style, same technical characteristics and an additional two colours for the 2018 **Polartec® Power Stretch**. Technical piece, stretches, breathable, very soft and comfortable, this zipped fleece is an indispensable partner for ski touring. Always at the bottom of the pack in case of cold, it can also be worn après ski due to its elegant style and reinforced chevron style shoulders.

technical infos

- ▶ Retro inserts on the chest.
- ▶ 240 gr. **Polartec Powerstretch Pro**
53% polyester, 38% nylon, 9% spandex.
- ▶ Two waist pockets.
- ▶ Adjustable hood.



blue

dark grey



stand out from the flock



range :

accessories

Black crows accessories are designed to stand up to the rigours of life in the mountains and exceed expectations of apres-ski aesthetics.

model :

manis men new

range :

handwear

Sizes: **S/M/L/XL**

Motto: **whatever**

description

The **manis** is a leather glove fitted with **PrimaLoft® Gold** insulation and a breathable and waterproof membrane. Inspired by 70's "racing" gloves, the **manis** is a freeride glove allying ergonomic and minimal design stamped with chevrons. Comfortable and precise, the **manis** is an ultra-resistant technical glove.

technical infos

- ▶ Neoprene cuffs in wrists to avoid the cold and the snow while limiting bulk under sleeves. Detachable wrist straps. Chevrons lightly reinforced for supplementary protection.
- ▶ Goatskin. Insulating **PrimaLoft® Gold** membrane. Waterproof and breathable 5.000/5000. Brushed jersey lining.



imperial blue

dark ivy/black



model :

moufla unisex new

range :

handwear

Sizes: **XS/S/M/L/XL**

Motto: **hot pocket**

description

If the mitten is unanimously recognised for its insulating virtues, we chose to endow it with an internal glove to keep the maximum sensibility when of grasping the poles. Due to **PrimaLoft® Gold** insulation, the new **moufla** allies the precision of a glove with the comfort and warmth of a nest at the end of the fingers.

technical infos

- ▶ Neoprene cuffs in wrists to avoid the cold and the snow while limiting bulk under sleeves. Detachable wrist straps. Construction in pleats to favour mobility. Chevrons lightly reinforced for supplementary protection.
- ▶ Goatskin. Insulating **PrimaLoft® Gold** membrane. Waterproof and breathable 5.000/5000. Brushed jersey lining.



dark grey/light grey

burgundy/black

black/pink



model :

palma unisex ♥new

range :

handwear

Sizes: XS/S/M/L/XL

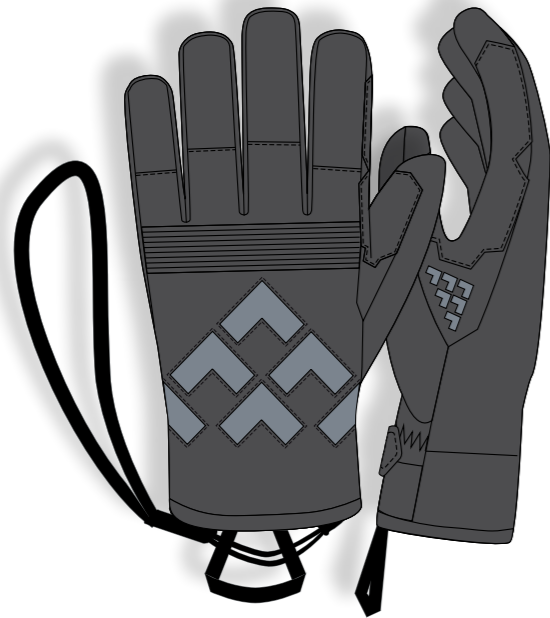
Motto: slap me

description

Semi-light glove aimed at touring, the **palma** has an extremely effective touch for good handling. All leather with numerous reinforcements, this glove destined for the mountains was inspired by bikers' gloves from the 70s for an ergonomic design and a look stamped with chevrons.

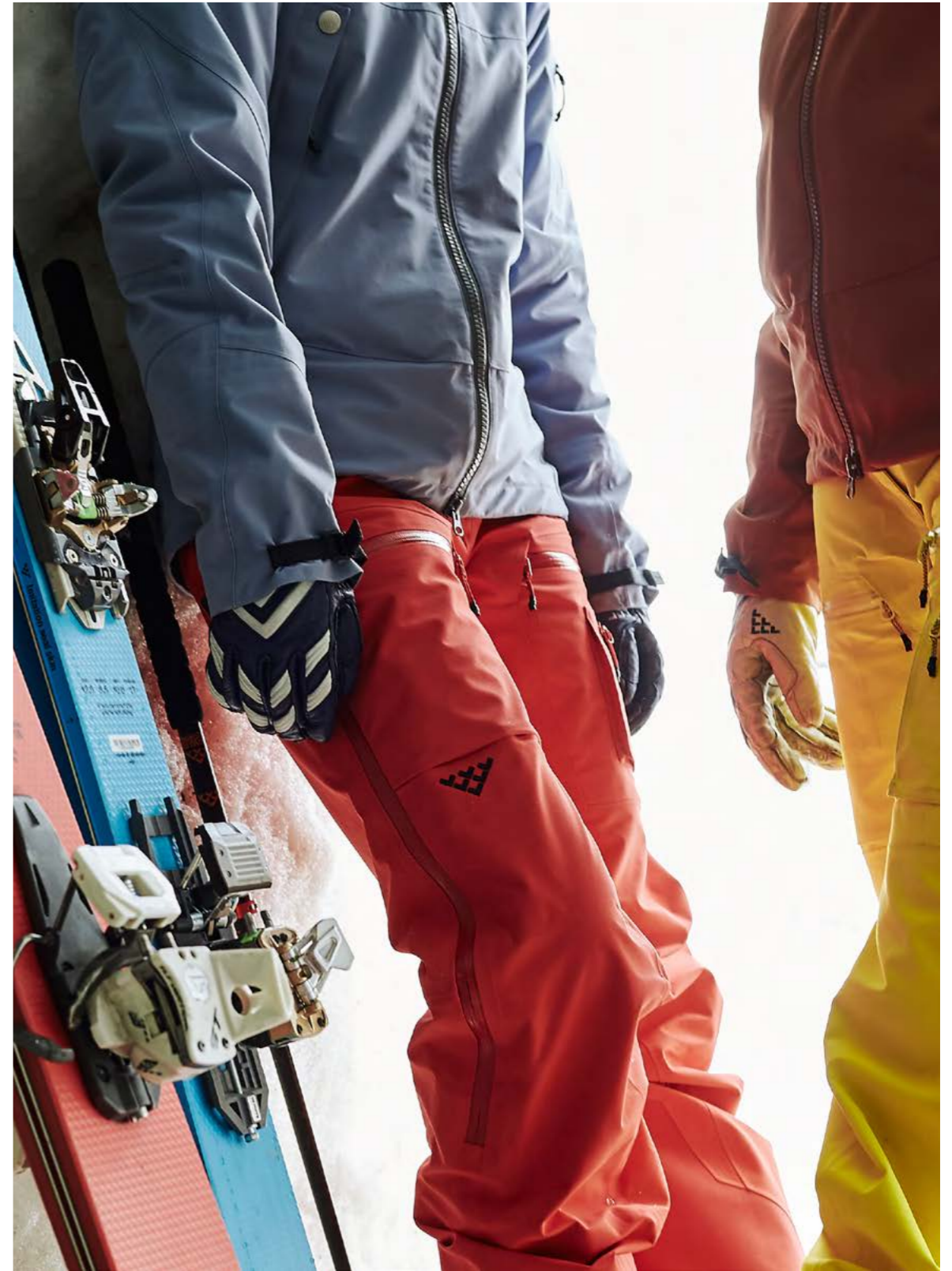
technical infos

- › Loop for pulling on glove.
- Pleats on the knuckles to facilitate finger movement. Flaps on the cuffs.
- › Goatskin. Brushed jersey lining.



marigold/black

dark grey/light grey



model :

testa beanie

range :

headwear

Fabric: 100% wool
Size: unisize

description

Couvre-chef.

The **testa** is made of two layers of wool, with a white badge with a black embroidered logo. This season we offer three beanies with contrasted color chevrons and two old colors.



sycamore

burgundy

imperial blue/black

navy/white

grey/black



model :

bolivia beanie

range :

headwear

Fabric: 50% wool/50% acrylic
Size: unisize

description

Universal joy.

Unlike its name would suggest, it doesn't come from bolivia but was inspired by the beanies worn during the golden age of skiing. It would happily grace the head of a chevron-clad skier busting a 'daffy', an incredibly aesthetic, but unfashionable, trick which evokes fond memories every time we do it.

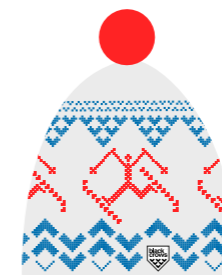


grey/red/navy

white/red/blue

blue/blue/blue

dark grey/pink/white



model :

nomen beanie

range :

headwear

Fabric: 50% acrylic/50% wool
Size: unisize

description

Eternal youth.

The **nomen** is inspired by vintage ski clubs and the sense of nostalgia one gets when thinking back to those early ski memories. In tri-colour block and topped off with a pompom, the **nomen** is designed to return the ski club to its former glory.



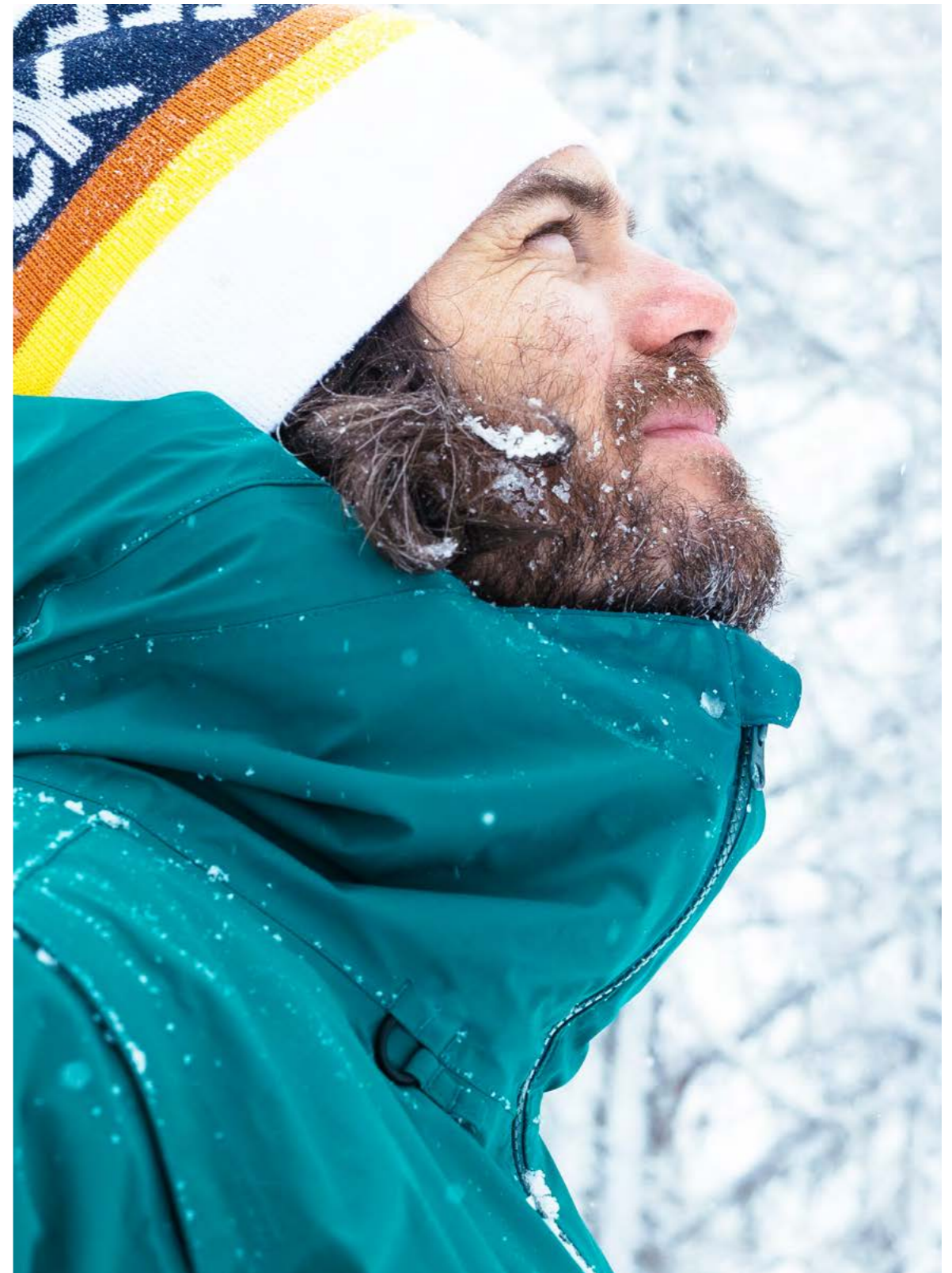
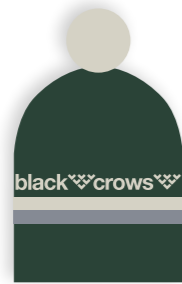
white/grey/navy

tradewinds /
sycamore/birch

burgundy/pink/beige

blue/red/white

white/navy/yellow



model :

radius

range :

headwear

red



white



black



model :

frons

marigold/navy



black/white



navy/pink



description

Hot head.

For keeping cool on a long ascent or for channeling your inner hotdogger, the **frons** and the **radius** are conspicuous and eye-catching. Wear it with a pair of pastel-colored wayfarers for the desired effect. The **frons** and the **radius** also guaranteed to look better if you have great hair.

Fabric: 50% wool/50% acrylic
Size: unisize

Fabric: 50% wool/50% acrylic
Size: unisize

model :

tubus

range :

headwear

black/grey



blue/light blue



green/light green



model :

maska

black/white/pink



black/white/yellow



petrol/white/red



description

Mask yourself.

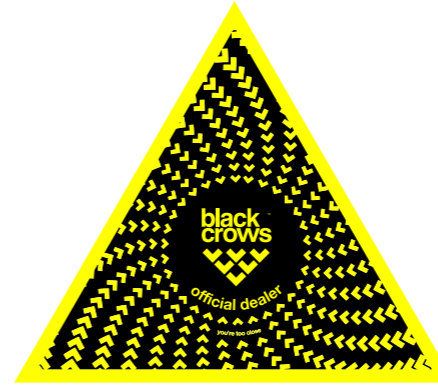
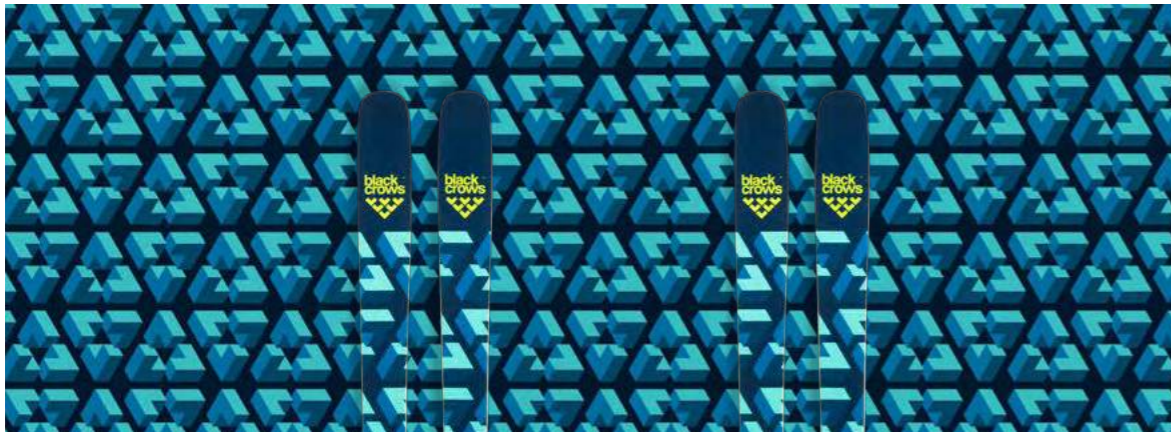
To complete the anti-chill kit, we present our practical elasticated neck tube - the **maska** and the **tubus**. Wear it around your neck, pull it up under your beanie for a balaclava feel, or wear it as a head wrap to let people know you've been to burning man. the **maska** is a basic essential in the contemporary skier's setup.

Fabric: 100% wool
Size: unisize

Fabric: 100% polyester
Size: unisize

POS overview

camouflage window displays



window sticker



brand sticker



info sticker



banners



posters



others

POS overview



promo tee-shirt



tote bag



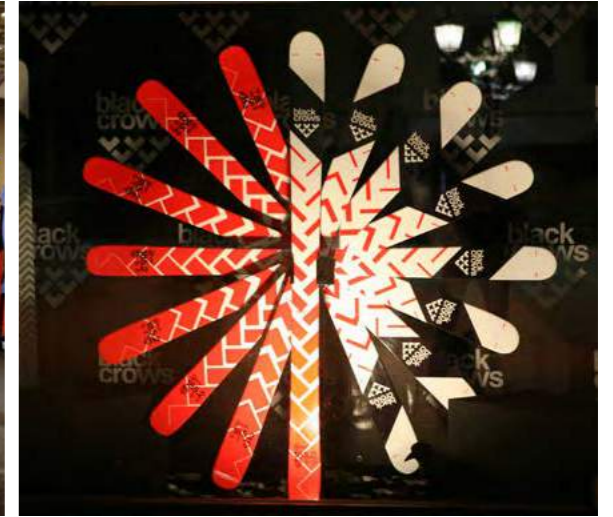
wall logo



corpus apparel display



snowflakes



flags



brand capsules

resort

orb
 vertis **♥new**
 arto
 firmo **♥new**



corpus 2-L jacket & pant
♥new



manis gloves
♥new



Primaloft® jacket



Polartec® pullover
♥new



all-terrain

navis
 daemon **♥new**
 camox
 captis
 meta



corpus 3-L jacket & pant
♥new



manis gloves
♥new



moufla mittens
♥new



Primaloft® jacket



fleece pullover **♥new**



big mountain

nocta
 anima
 atris **♥new**
 corvus
 oxus
 furtis



ventus 3-L jacket & pant



palma gloves
♥new



Polartec® Powerstretch Pro jacket



dorsa 27
♥new



backcountry

anima
 corvus
 navis
 camox
 freebird
 freebird
 freebird
 freebird
 duos
 trios



ventus 3-L light jacket & pant **♥new**



Polartec® alpha jacket
♥new



palma gloves
♥new



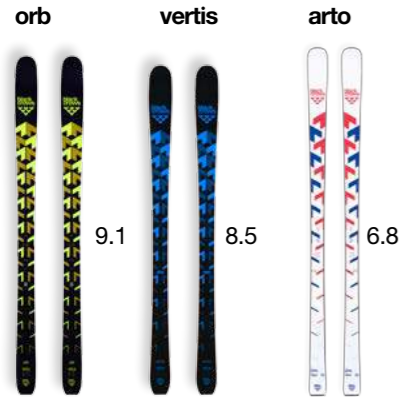
dorsa 27
♥new



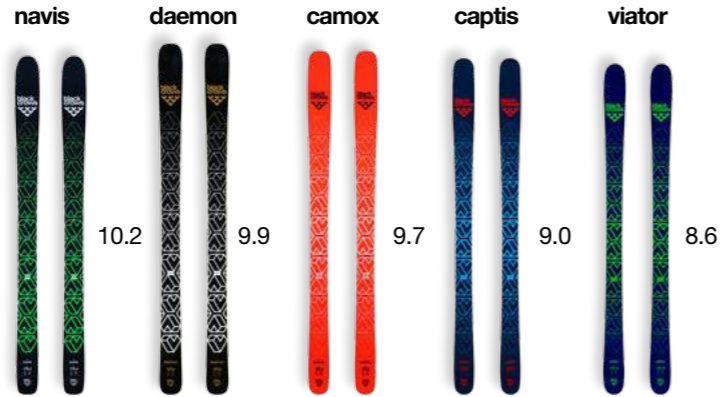
others

hardgoods

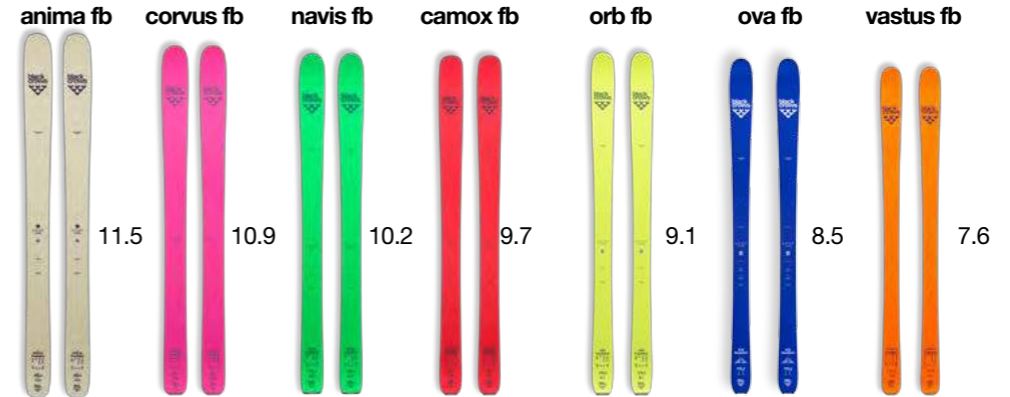
resort



all-terrain



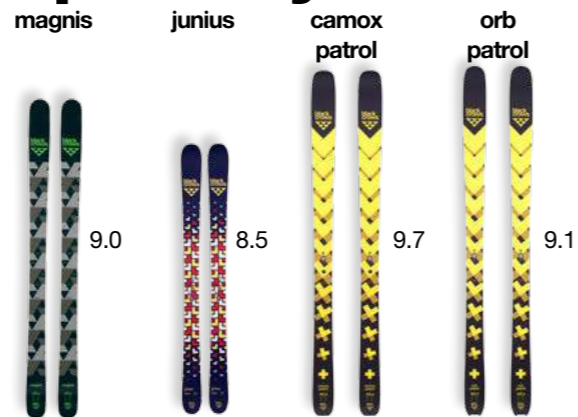
backcountry



big mountain



specialty



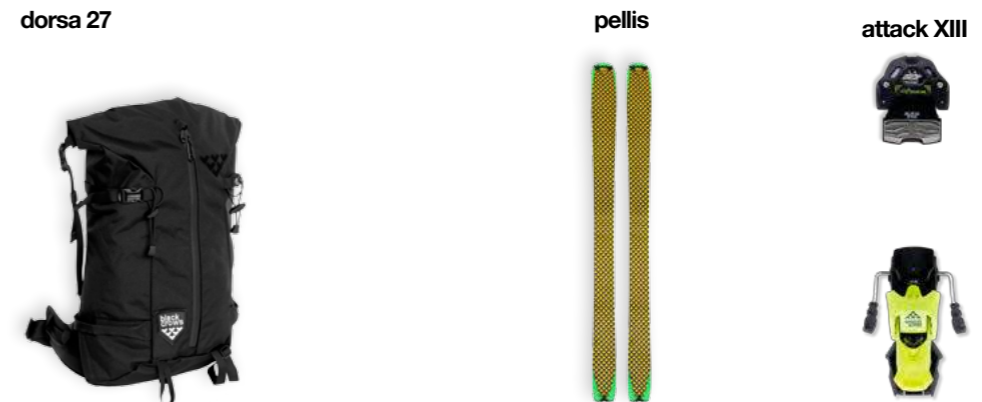
poles



birdie



accessories



others

softgoods M

corpus

GORE-TEX® men
3-L jacket & bib pant



GORE-TEX® men
2-L jacket & pant



Primaloft® men
bomber jacket



Polartec® men
pullover



fleece men
pullover



ventus

GORE-TEX® men
3-L jacket & pant



GORE-TEX® men
2-L jacket & pant



Polartec® men
Powerstretch Pro jacket



Polartec® men
alpha jacket



handwear

manis



moufla



palma



headwear

nomen



bolivia



testa



softgoods W

corpus

GORE-TEX® women
3-L jacket & pant



ventus

GORE-TEX® women
3-L jacket & pant



GORE-TEX® women
2-L jacket & pant



Primaloft® women
bomber jacket



Polartec® women
pullover



fleece women
pullover



Polartec® women
Powerstretch Pro jacket



Polartec® women
alpha jacket



handwear

manis



moufla



palma



headwear

nomen



bolivia



testa



tech section

GORE-TEX® 3-L for the corpus 3-L jacket & pant and the ventus 3-L jacket & pant



Engineered with 3-layer GORE-TEX® product technology

- Designed for a wide range of outdoor activities
- Provides breathable comfort and durable waterproof and windproof protection
- The GORE-TEX® membrane is bonded to the outer material and an inner lining
- No movement between the layers, less wear and tear, and greater durability



GORE-TEX® 2-L for the corpus 2-L jacket & pant men



Engineered with 2-layer GORE-TEX® product technology

- Designed for a wide range of outdoor activities
- Provides breathable comfort and durable waterproof and windproof protection
- The GORE-TEX® membrane is bonded to the outer material and protected on the inside by a separate lining
- The separate lining inside ensures better wearing comfort and versatility



GORE-TEX® C-KNIT for the ventus 3-L light jacket & pant



NEW: 3L GORE-TEX® PRODUCT WITH GORE® C-KNIT™ BACKER TECHNOLOGY

Optimizes comfort and performance using a patent pending laminate construction featuring a special knit backer. This new technology reduces weight and improves breathability while feeling soft to the touch, particularly next to skin. It also allows the garment to slide easily over base-layers and mid-layers.



Primaloft® Silver used in the corpus Primaloft® jacket men & women



HIGH-PERFORMANCE INSULATION
WITH A FULL SPECTRUM OF FEATURES


WATER RESISTANT, WIND RESISTANT, BREATHABLE, FAST DRYING, THERMALLY EFFICIENT, COMPRESSIBLE.

PRIMALOFT® SILVER INSULATION

Primaloft® Silver insulation is the go-to for technical performance in a wide range of activities. Millions of air pockets trap body heat in extreme conditions while a lack of bulk provides uncompromised freedom of movement. The Primaloft® proprietary treatment ensures the insulation maintains its warmth even in wet conditions. Durability is a lightweight design for active applications, with breathability, packability and softness, deliver a high performance insulation without compromise.



Primaloft® Gold used in the manis glove and moufla mitten




THE BENCHMARK IN PERFORMANCE
OF ALL SYNTHETIC INSULATIONS

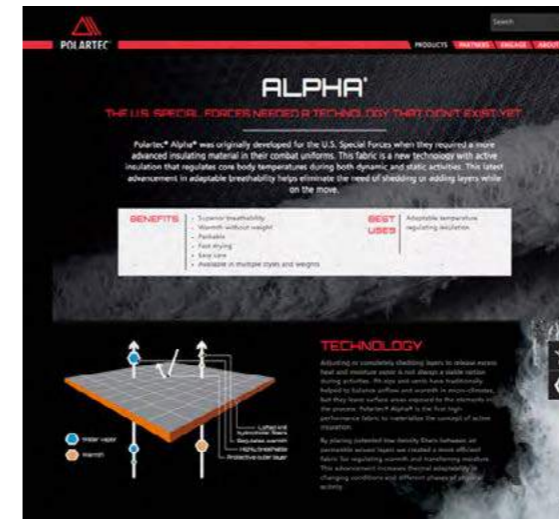
WATER RESISTANT, WIND RESISTANT, BREATHABLE, FAST DRYING, THERMALLY EFFICIENT, COMPRESSIBLE.

PRIMALOFT® GOLD INSULATION

The synthetic insulation by which all others are judged, Primaloft® Gold insulation is the go-to choice for adventurers looking for protection in extreme conditions. Millions of Primaloft® micro fibers trap body heat to make this the most thermally efficient synthetic insulation available, with no wet spots that insulate less in the wettest weather. As a result, Primaloft® Gold insulation maintains 80% of its warmth when wet while featuring outstanding breathability, packability and softness. Consider this the pinnacle of insulation performance.



Polartec Alpha used in the ventus Alpha jacket men & women



ALPHA
THE U.S. SPECIAL FORCES NEEDED A TECHNOLOGY THAT DIDN'T EXIST YET

Polartec® Alpha® was originally developed for the U.S. Special Forces when they required a more advanced insulating material in their combat uniforms. This fabric is a new technology with active insulation that regulates core body temperature during both dynamic and static activities. The latest enhancement in adaptable breathability helps minimize the need of shedding or adding layers while on the move.

BENEFITS

- Superior breathability
- Moisture-wicking
- Packable
- Fast drying
- Durable
- Available in multiple styles and weights

BEST USES

- Adaptable temperature regulating insulation

TECHNOLOGY

Adding an increasingly challenging layer to release excess heat and moisture is a real driver of weight gain during activities. The new gold series has breakthroughs that help reduce weight and improve breathability. The new Polartec® Alpha® is the first high performance fabric to combine the benefits of active insulation.

By having combined the flexibility, flow, and breathability of synthetic fibers with the compressible and moisture-wicking properties of natural fibers, Polartec® Alpha® is the first high performance fabric for regulating warmth and transferring moisture. The active construction provides superior breathability for the most demanding and efficient activities.

Polartec Power Stretch used in the ventus Polartec Power Stretch Pro jacket men & women



THERMAL PRO
FLEECE'S FORM WAS DESTINED TO EVOLVE

Polartec® Thermal Pro® was developed to bring a wider variety of styles and performance functionality to synthetic fleece technologies. By reengineering our construction methods, we created an expansive platform of fabric structures with superior benefits over traditional fleece. These unique features enhance the fabric's overall efficiency and are the defining reason why synthetic fleece will never go out of style as the preferred choice for performance insulation fabrics.

BENEFITS

- Warmth without weight
- Highly breathable
- Fast drying
- Durable
- 100% GSM
- Available in multiple styles and weights

BEST USES

- Retains weather resistant insulation

TECHNOLOGY

Evolution the design of our original Power Stretch technologies has advanced the compressible and moisture-wicking benefits of synthetic fibers. By reengineering our construction methods and innovative knitting techniques we created Polartec® Thermal Pro® to push the capabilities of synthetic fibers to higher levels of style and performance.

The ability to regulate core warmth for optimal comfort is provided by thermal air pockets that ensure faster-wicking breathability. Minimizing the mass through air pockets also provides superior moisture-wicking and moisture-compatibility for better packing and storage.

Polartec Thermal Pro used in the corpus Polartec pullover men & women



THERMAL PRO
FLEECE'S FORM WAS DESTINED TO EVOLVE

Polartec® Thermal Pro® was developed to bring a wider variety of styles and performance functionality to synthetic fleece technologies. By reengineering our construction methods, we created an expansive platform of fabric structures with superior benefits over traditional fleece. These unique features enhance the fabric's overall efficiency and are the defining reason why synthetic fleece will never go out of style as the preferred choice for performance insulation fabrics.

BENEFITS

- Warmth without weight
- Highly breathable
- Fast drying
- Durable
- 100% GSM
- Available in multiple styles and weights

BEST USES

- Retains weather resistant insulation

TECHNOLOGY

Evolution the design of our original Power Stretch technologies has advanced the compressible and moisture-wicking benefits of synthetic fibers. By reengineering our construction methods and innovative knitting techniques we created Polartec® Thermal Pro® to push the capabilities of synthetic fibers to higher levels of style and performance.

The ability to regulate core warmth for optimal comfort is provided by thermal air pockets that ensure faster-wicking breathability. Minimizing the mass through air pockets also provides superior moisture-wicking and moisture-compatibility for better packing and storage.

RECCO® used in all GORE-TEX® jackets & pants



Be searchable

A RECCO REFLECTOR MAKES YOU SEARCHABLE

1. The RECCO technology helps professional rescuers worldwide find you if you are buried in an avalanche.
2. The RECCO system consists of two parts: A RECCO detector is used by professional rescuers to locate the RECCO reflector you are wearing.
3. The RECCO reflector is a small reflective antenna that comes integrated in sports apparel and equipment and is therefore always with you.
4. The RECCO detector emits a radar signal, like a beam from a flashlight. When hit by the signal the reflector bounces a signal back to the detector.
5. The RECCO reflectors require no power and no activation to function.
6. The RECCO system is global, used by more than 800 ski resorts, SAR teams and helicopter bases.
7. More than 200 brands currently integrate RECCO reflectors in jackets, pants, helmets, boots, back protectors and backpacks.

